



Kern Connected Community Network

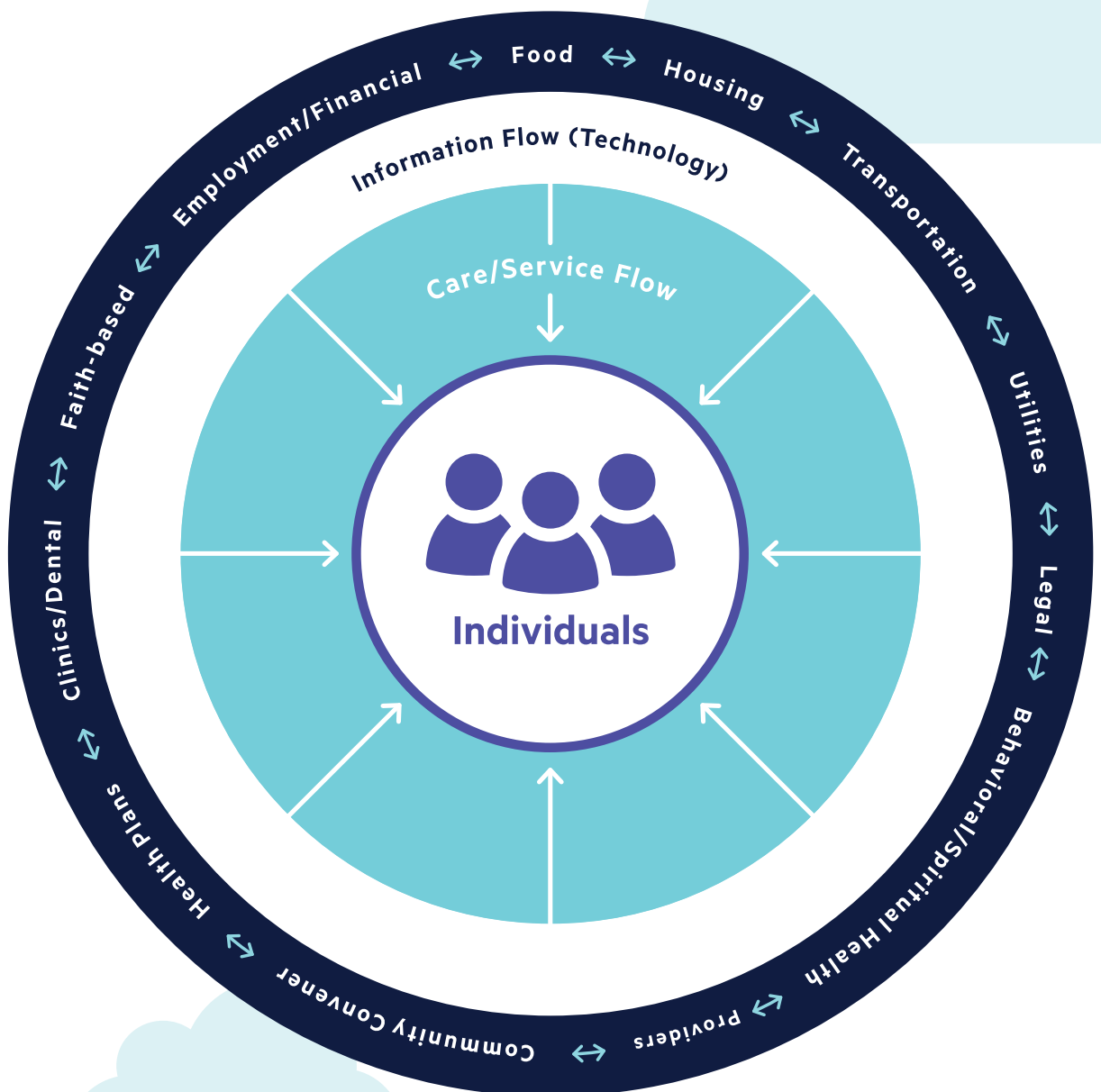
FAQ

FOR COMMUNITY-BASED ORGANIZATIONS



What is the Kern Connected Community Network (CCN)?

The Kern CCN was launched to help provide a smooth transition for patients to community resources. The CCN creates efficient linkages between hospitals, clinics, and local community organizations throughout Kern County that provide services vital to underserved populations.



What is the goal of the CCN?

The goal of this new partnership in Kern County is to construct a community solution to address the social determinants of health and link individuals to community resources. These resources meet a variety of social and economic needs, including chronic disease management programs; healthy food; mental and substance abuse counseling; stable and affordable housing; and maternal, infant, and child health.

Why is this network needed?

Health begins in homes, workplaces, schools, and communities. The Centers for Medicare and Medicaid Services found that only 20 percent of health outcomes are the direct result of clinical care, while 40 percent are tied to social and economic determinants. What's more, 90 percent of the nation's \$3.3 trillion healthcare expenditures are for people with chronic and mental health conditions. Addressing an individual's social needs is critical to caring for the whole person and ensuring that people have all the support needed to achieve their best health and wellness.

How does it work?

The Kern CCN is built around a network of community partners working together to coordinate communication and implementation processes to provide electronic referrals and track outcomes for vulnerable populations. A key element of the CCN is Unite Us, a technology solution which streamlines the referrals for social needs to organizations providing direct services. By electronically linking an individual's entire "care team" to coordinate care, we can remove the onus on the individual to navigate much-needed services for themselves.

How do the CCN partners work together?

Kern Community Foundation is the neutral convener and fiscal agent of the Kern CCN and works to bring a diverse group of community-based organizations to participate in the network. To share the cost of the program, a multi-sector payer model of Funding Partners has been developed to include providers, payers, businesses, and philanthropic partners. Each Funding Partner commits to contributing annually to cover the cost of network development, technology licensing, and project management.

What is the role of a community partner?

Community partners are community-based organizations (CBOs) and other medical and social providers that directly provide care, social, economic, and health resources in the community. The CBOs are responsible for assessing the needs of patients/clients, making referrals, and tracking outcomes of services. They will also train staff and provide quality assurance and process improvement.

Interested in joining the Kern Connected Community Network?

Contact Kern Community Foundation at **661.325.5346** or **info@kernfoundation.org**.

Through bold, innovative solutions and shared values, we can impact the lives of those who need us the most, removing barriers to quality medical care and community resources.

CCN Impact



Improved quality of care created by a comprehensive network, delivering coordinated services to vulnerable populations



Lowers agency costs by eliminating redundant and duplicative efforts



Ability to track referrals, develop a collective data system and ultimately improve community health outcomes



Promotes efficiency and collaboration among partner organizations



24/7 access to community resources



Strengthen and empower families

Funding Partners

Blue Shield of California

Dignity Health Memorial & Mercy Hospitals

Health Net

Kaiser Permanente

Kern Family Health Care

Kern Connected Community Network

Security and Privacy Statement:

The Unite Us technology platform is compliant with HIPAA, FERPA, and FIPS. Data is secured and encrypted while in storage and in transit.

The technology captures the patient's informed consent to allow information sharing with the network partners.