

# COMMUNITY

# Giving Guide

Bakersfield Firefighters Historical Society



Give Big Kern



Kern County  
Scottish Society



Alzheimer's Disease  
Association of Kern County



Alpha Canine Sanctuary



KERN COMMUNITY  
FOUNDATION

Growing community.  
Growing philanthropy.

Turning Kern County's generosity into impact for 20 years!

# KERN COMMUNITY FOUNDATION

... a 501(c)(3) public charity with a powerfully simple mission — Growing Community. Growing Philanthropy. We are known as a home for local philanthropists, a results-oriented grantmaker, and a trusted community leader.

... improving the quality of life in Kern County by increasing charitable giving, educating and connecting donors to community needs they care about, and taking the lead on critical community issues.

... transforming generosity into impact, making Kern County a better place to live, to work, and to visit — bringing together hundreds of donors to grant out millions of dollars to worthy causes since 1999.

## Give to the Foundation

Support one of our initiatives or our operations, thereby increasing our impact.



Together we make our community a better place.

## Give through the Foundation

Establish your own fund, have us work for you, and support the causes you care about.



→ Growing community. Growing philanthropy. ←

**Use this guide to inspire your local giving!**

## WHAT IS A COMMUNITY FOUNDATION?

Community Foundations help build and strengthen communities and bring together people and organizations that want to make a difference. They are tax-exempt public charities that guide philanthropy and are dedicated to improving the quality of life in the areas they serve.

# 20 Years of Turning YOUR Generosity into Impact!

“Growing Community. Growing Philanthropy.” Our mission is a simple statement rooted in all we stand for at Kern Community Foundation.

For 20 years, we have provided philanthropic resources and community leadership to help make Kern County a great place for everyone to live, work, play – and thrive. I am thrilled to present this commemorative edition “Community Giving Guide” as both a resource for you to learn more about the many nonprofits that enrich our community every day and a 20-year retrospective of the Foundation’s service to Kern County.

In 1995, community leaders Curtis Darling and Morton Brown discussed the feasibility of establishing a community foundation for all of Kern County. Their goal was to maximize the impact of aggregate philanthropy, building endowments that would address Kern County’s changing needs over time. The founding Board of Directors that included Mort, Curtis, Bruce Bunker, Noel Daniells, Joan Dezember, Claude Kimball, Mary Lou Thomson, Marjorie Rump, and Ginger Moorehouse organized the Foundation and executed an agreement with the California Community Foundation in Los Angeles to manage Kern’s philanthropic funds. In 1999, a generous development grant from the David & Lucile Packard Foundation put Kern’s community foundation into operation.

A community foundation is about place, to be sure, but it is also about people — generous people with a broad vision to enhance the quality of life where they live. Our Founding Directors are some of those people, as are the many donors and committed staff. People like Marvin Steinart, Judy Chase, Noel Daniells (both a founding Board Member and Foundation President), Dave Parker, Judi McCarthy, and Jeff Pickering. We all owe a debt of gratitude to these and other dedicated leaders for growing the Foundation’s capabilities and assets.

During the past 20 years, the Foundation has grown to almost \$22 million in managed funds AND awarded almost \$20 million in grants to the community — consistently ranking in the top two-thirds of the 100 most active grantmakers since 2013, nationwide. This growth, along with the support of gen-

erous private foundations like The James Irvine Foundation, the Weingart Foundation, The California Wellness Foundation, and the College Futures Foundation has allowed us to build our capacity to serve donors while increasing the scope with which we address community needs.

Kern Community Foundation continues to build endowments and help generous donors aggregate their philanthropy but, as an organization, we have grown to understand that our responsibility expands to improving the community we serve. To that end, we work thoughtfully with our education partners to increase Kern’s educational attainment through the recently launched Kern Pledge, a collective community resolution to connect every level of education, K-16, in Kern County and a robust Kern Futures scholarship platform.

Additionally, we are dedicated to strengthening Kern’s nonprofit sector — building capacity, increasing visibility and improving sustainability through a full cadre of competitive grant opportunities and programs. The following pages illustrate our support of close to 250 nonprofit partners. Use this ‘Community Giving Guide’ to learn more about the nonprofit organizations working tirelessly to enrich our community every day and...find your passion!

Kern Community Foundation believes in “Growing Community, Growing Philanthropy” and matching resources with needs to effect lasting change. The results of the past 20 years are a reflection of the giving spirit of Kern County, as well as

our community’s belief in Kern Community Foundation as a trusted partner. Thank you for your ongoing support!



**Kristen Beall, Ed.D**  
*Kern Community  
Foundation President  
and CEO*

## *Kern Community Foundation Board of Directors*

Kristen Beall

Chandrasekhar Commuri

Sergio De Castro

Kevin Findley

Jennifer Floyd

Jeffrey Gutierrez

Harold Hansen

Midge Boydston Jimerson

Stephen Sanders

Carlos Sanchez

Kate Tandy

Diane White



# Arts and Culture

## **The Arts Council of Kern**

To provide support, and promote arts access, advocacy, and education for all Kern County residents and visitors.

[kernarts.org](http://kernarts.org)

## **Bakersfield Art Association**

To provide opportunity for study and improvement of art technique, encourage art in community, offer art scholarships, and exhibit members' art locally.

[bakersfieldartassociation.org](http://bakersfieldartassociation.org)

## Make a difference



▲ **\$2,000** helps The Bakersfield Jazz Workshop send one deserving student to a summer music camp.

**\$1,000** covers Assistant Curator activities' expenses for two months at the Shafter Historical Society/Shafter Depot Museum.

**\$500** provides a college music lessons scholarship for one student through the Desert Community Orchestra Association.

**\$385** covers one child's tuition at the Bakersfield Music Theatre's Summer Workshop.

**\$40** is the cost for one light to shine brighter on a child's performance on stage at Bakersfield's Majestic Fox Theater, courtesy of The Fox Theater Foundation.



## **Bakersfield Community Theatre**

To produce a series of plays annually for the cultural enrichment of the community.

[bctstage.org](http://bctstage.org)

## **Bakersfield Firefighters Historical Society**

To restore, preserve and share the valuable history and timeless artifacts of the Bakersfield Fire Department.

[bfdhistory.com](http://bfdhistory.com)

## **Bakersfield Jazz Workshop**

To promote Jazz education and performance throughout Kern County in a supportive environment.

[bakersfieldjazzworkshop.com](http://bakersfieldjazzworkshop.com)

## **Bakersfield Master Chorale**

To provide a venue in Kern County for the appreciation and awareness of choral music and choral arts education.

[bakersfieldmasterchorale.org](http://bakersfieldmasterchorale.org)

## **Bakersfield Museum of Art (BMOA)**

To inspire and engage diverse audiences by providing creative visual art experiences through exhibition, education, community outreach and special events.

[bmoa.org](http://bmoa.org)

## **Bakersfield Music Theatre & Stars Theatre Restaurant**

To produce quality musical theatre and theatre education in Kern County.

[bmtstars.com](http://bmtstars.com)

## **Bakersfield Symphony Orchestra**

To provide performances of great music, and provide music education for the young people of Kern County.

[bsonow.org](http://bsonow.org)

## **Center of the World Festival, Inc.**

Developing an interdependent and ecologically sensitive community through social theater of creative arts.

[cowfest.org](http://cowfest.org)

## **Desert Community Orchestra Association**

To present symphonic concerts and support music education and community activities, including youth performances and college scholarships.

[desertcommunityorchestra.weebly.com](http://desertcommunityorchestra.weebly.com)

## **Downtown Bakersfield Development Corporation (DBDC)**

Inspires community leaders to unite community resources to develop Bakersfield's Downtown as a pre-eminent California community.

[bakersfielddbdc.com](http://bakersfielddbdc.com)

### **The Fox Theater Foundation**

To enhance the quality of life in Kern County through the effective operation of the Historic Fox Theater as the area's premier cultural and community event center.

[thebakersfieldfox.com](http://thebakersfieldfox.com)



### **The Green Hotel Restoration Foundation**

To preserve the Hotel and 130-year-old historic oak on the property as part of Shafter and Kern history, and provide access to the community.

[thegreenhotel.org](http://thegreenhotel.org)

### **Kern County Museum Foundation**

Celebrating the culture and history of Kern County.

[kerncountymuseum.org](http://kerncountymuseum.org)

### **Kern County Scottish Society**

To promote and preserve Scottish heritage and culture in Kern County.

[kernscot.org](http://kernscot.org)

### **Kern Dance Alliance (KDA)**

Providing dance advocacy and dedicated to the educational and cultural needs of Kern County.

[kerndance.org](http://kerndance.org)

### **Kern River Tubatulabal Paiute Council**

Dedicated to preserving, restoring, and teaching Native American culture, history and traditions for educational, ceremonial and social activities.

[nuuicunni.com](http://nuuicunni.com)

### **Kern River Valley Art Association**

To provide opportunities, resources and exhibition venues for Kern River Valley artists with an emphasis on art education and emerging artists.

[krvaa.org](http://krvaa.org)

### **Maturango Museum of Indian Wells Valley**

To preserve, interpret and develop an appreciation for the natural and cultural history of the Northern Mojave Desert.

[maturango.org](http://maturango.org)

### **Petroglyph Education Foundation, Inc.**

To raise public awareness about the significance of Native American history, culture and Rock Art, and the importance of protecting these Native American contributions.

[rpfestival.com](http://rpfestival.com)

### **Ridgecrest Chamber Music Society**

To promote education and awareness of chamber music and provide community members with a high quality musical experience.

[rcchambermusic.org](http://rcchambermusic.org)

### **Shafter Historical Society (Shafter Depot Museum)**

To research and publish local history and to collect and exhibit artifacts relating to the history of Shafter.

[shafterdepotmuseum.org](http://shafterdepotmuseum.org)

### **Sweet Adelines International**

Committed to advancing the musical art form of barbershop harmony through opportunities in education, performance and competition.

[kernvalleychorus.org](http://kernvalleychorus.org)

### **Theatre Arts Productions Spotlight Foundation**

To enrich the quality of life for Kern County residents by providing a professional theatrical experience at a venue that showcases homegrown talent.

[thespotlightplayhouse.com](http://thespotlightplayhouse.com)

### **Valley Public Radio**

Expanding your world through voices and sounds that inform and inspire.

[kvpr.org](http://kvpr.org)



## **Philanthropy on Tap**

At Kern Community Foundation, we believe Kern County's hard-working nonprofits deserve a toast—and we lift our glasses to them every month through Philanthropy on Tap.

Thanks to a partnership with the Greater Bakersfield Chamber of Commerce, Imbibe Wine & Spirits Merchant and Temblor Brewing Co., we showcase a different community-based organization each time in an informal setting, over drinks and hors d'oeuvres—on us!

Through this Nonprofit Speaker Series designed to introduce philanthropic and volunteering opportunities with a variety of charities to audiences of local business leaders, we are expanding strategic connections between our nonprofit and for-profit sectors in the spirit of our mission of "Growing Community. Growing Philanthropy."

For a schedule of Philanthropy on Tap events, visit [kernfoundation.org](http://kernfoundation.org) > About > Events.



# Education and Youth Development

## African American Network of Kern County

Through unity, promote responsible and meaningful programs to educate, create economic parity and job opportunities, and produce positive role models.

[aankc.org](http://aankc.org)

## African Children's Schools

Building schools for rural children in Africa in areas where there is no public education available.

[africanchildrensschools.org](http://africanchildrensschools.org)



## Bakersfield North Rotary Foundation

To act as the charitable arm of Bakersfield North Rotary Club to support charities in the Greater Bakersfield area, particularly those serving children and youth.

[bakersfieldnorthrotary.org](http://bakersfieldnorthrotary.org)

## Bakersfield Play Center

Since 1952, focusing on enhancing the development of the whole child.

[bakersfieldplaycenter.com](http://bakersfieldplaycenter.com)

## Bakersfield Police Activities League

Guiding at-risk youth through quality educational and athletic after-school programs to healthy alternatives to drugs, alcohol, gangs, and violence.

[bakersfieldpal.org](http://bakersfieldpal.org)

## Best Buddies International

To establish a global volunteer movement that creates opportunities for one-to-one friendships, integrated employment and leadership development for people with intellectual and developmental disabilities.

[bestbuddies.org](http://bestbuddies.org)

## Boy Scouts of America Southern Sierra Council

To prepare young people to make ethical and moral choices over their lifetimes by instilling in them the values of the Scout Oath and Law.

[sscsa.org](http://sscsa.org)

## Boys & Girls Clubs of Kern County

To enable all young people, especially those who need us most, to reach their full potential as productive, caring, responsible citizens.

[bgclubsofkerncounty.org](http://bgclubsofkerncounty.org)

## Buena Vista Museum of Natural History and Science

To educate and involve the community through the recovery, preservation and display of local and worldwide natural history objects.

[sharktoothhill.org](http://sharktoothhill.org)

## Make a difference

**\$500** provides one year's worth of supplies for a Teen Success, Inc.'s peer learning group of 15 teen moms.

**\$300** lets South Kern Sol's youth-led newsroom cover one month's worth of meals for its youth meetings.



**\$150** sponsors one of Kern County 4-H Clubs' teen leaders, enabling them to attend a sectional 4-H Youth Summit.

**\$100** allows two students to participate in the So You Want to Be a Rocket Scientist Summer Program through the China Lake Museum Foundation.

**\$50** helps Bakersfield Play Center replace playground equipment worn out by its very energetic little preschoolers.

## American Youth Soccer Organization (AYSO) Region 181

To develop and deliver quality soccer programs which promote a fun, family environment based on these philosophies: Everyone Plays; Balanced Teams; Open Registration; Positive Coaching; Good Sportmanship.

[ayso181.org](http://ayso181.org)

## Bags4Kids

To be a voice for the foster youth whose inner struggles go unheard, thereby restoring their capacity to believe they have not been forgotten.

[bags4kids.org](http://bags4kids.org)

## Bakersfield City School District Education Foundation

Partnering with the community to provide resources that directly impact the lives of children through innovative educational programs.

[bcsd.com](http://bcsd.com)

## Bakersfield College Foundation

Expanding educational access and opportunity for students of all ages.

[bakersfieldcollege.edu/foundation](http://bakersfieldcollege.edu/foundation)

## Bakersfield Ivy Legacy Foundation

To collaborate with local agencies to secure and manage resources for educational, leadership and philanthropic programs of Alpha Kappa Alpha Sorority Bakersfield.

[bakersfieldivylegacy.org](http://bakersfieldivylegacy.org)



### Center for Land Based Learning

To inspire, educate and cultivate future generations of farmers, agricultural leaders, and natural resource stewards.

[landbasedlearning.org](http://landbasedlearning.org)

### Child Guidance Guild of Bakersfield (Guild House Restaurant)

To provide resources to help children with emotional and behavior problems.

[guildhousebakersfield.com](http://guildhousebakersfield.com)

### Children to Love International

To provide hope for suffering children in the name of Jesus, focusing our efforts on education, spiritual teaching, economic support, physical assistance, and social intervention.

[childrentolove.org](http://childrentolove.org)

### China Lake Museum Foundation

To operate the China Lake Museum and educate visitors about air armament technology development at Naval Air Warfare Center China Lake, and provide STEM education.

[chinalakemuseum.org](http://chinalakemuseum.org)

### Christian Youth Film Society, Inc.

To encourage and equip young people to creatively produce visual stories of faith.

[christianyouthfilmfestival.org](http://christianyouthfilmfestival.org)

### CSUB Auxiliary for Sponsored Programs Administration

Administering externally sponsored programs and research projects on behalf of the University for the charitable and educational benefit of students, faculty, staff, and alumni.

[csub.edu/grasp](http://csub.edu/grasp)

### CSUB Foundation

To advance California State University, Bakersfield by creating strong and lasting relationships that enrich the student experience and promote excellence in education.

[csub.edu/foundation](http://csub.edu/foundation)

### Driller to Driller Foundation

Rewarding students by providing scholarships to those who are overlooked by traditional programs and are limited by their financial status.

[drillertodrillerfoundation.org](http://drillertodrillerfoundation.org)

### Farmer Veteran Coalition

To mobilize veterans to feed America by supporting, through education and training, those veterans engaged in or pursuing opportunities in the agricultural industry.

[farmvetco.org](http://farmvetco.org)

### Girl Scouts of Central California South

To build girls with courage, confidence, and character, who make the world a better place.

[girlscoutscs.org](http://girlscoutscs.org)

### Good SamariTots

Fostering compassion and social responsibility via community service projects geared toward tots.

[goodsamaritots.org](http://goodsamaritots.org)

### Heritage Oak School

To educate, promote, establish, and equip Tehachapi students in the classical approach to education in light of a Christian world view grounded in the Old and New Testaments.

[heritageoakschool.info](http://heritageoakschool.info)

### Inspiring Adolescence, Inc.

Cultivating a dynasty of leaders.

### Jakara Movement

Seeking to create a new generation of Sikh leadership in California through individual development and community building.

[jakara.org](http://jakara.org)

### Jim Burke Education Foundation

Providing opportunities for students to excel by enhancing educational and leadership development through financial resources, support and advocacy.

[jimburkeeducationfoundation.org](http://jimburkeeducationfoundation.org)

### Kegley Institute of Ethics

To inspire our community to recognize the value of thinking about and engaging in ethical behavior.

[csub.edu/kie](http://csub.edu/kie)

### Kern Athletic Fencing Foundation

Implementing "Smart Fencing for Kern County," which supports at-risk students by improving their academic, social, and physical well-being through individual sport participation, health education, and academic tutoring.

[kernaff.org](http://kernaff.org)

### Kern Bridges Youth Homes

Committed to providing for the physical, emotional, social, and mental health needs of abused and neglected children.

[kernbridges.com](http://kernbridges.com)

### Kern County 4-H Clubs

Engaging youth in reaching their fullest potential while advancing the field of youth development.

[cekern.ucanr.edu](http://cekern.ucanr.edu)

### Kern County Network for Children

To protect and enrich the lives of Kern County children.

[kcnc.org](http://kcnc.org)



### Kern County Superintendent of Schools Educational Services Foundation

To provide educational services throughout Kern County.

[kern.org](http://kern.org)



# Education and Youth Development

## **Kern County Taxpayers Education Fund**

To research, organize and disseminate information and education to the public and business community of Kern County.  
[kerntaxpayers.org](http://kerntaxpayers.org)

## **Kern Economic Development Foundation**

Linking business, education, and the community on projects related to STEM (science, technology, engineering and math) education, the local workforce, and professional development.  
[kedf.org](http://kedf.org)

## **Kern Literacy Council**

Empowering individuals to improve their quality of life through literacy education since 1966.  
[kernliteracy.org](http://kernliteracy.org)

## **Kern Partnership for Children and Families**

Seeking to meet needs of low-income and foster children in Kern County.  
[kernpartnership.com](http://kernpartnership.com)

## **Kiwanis Club of Rosedale Foundation**

To better the lives of the children and families of our community one child and one family at a time.  
[rosedalekiwanis.org](http://rosedalekiwanis.org)

## **La Cresta Foundation**

Dedicated to the educational and emotional well-being of infants and young children and their families.  
[e-warmline.org](http://e-warmline.org)

## **Latina Leaders of Kern County**

To foster leadership, to identify and develop opportunities for Latinas, and to influence key issues affecting our community.  
[kernlatinas.com](http://kernlatinas.com)

## **League of Dreams, Inc.**

To give every child a chance to play by providing sporting opportunities to children with physical and developmental disabilities.  
[ourleagueofdreams.com](http://ourleagueofdreams.com)

## **Missions of Love, Inc.**

Changing young lives through the magic of music education and the miracle of instrument training.  
[miraclemusic4kids.org](http://miraclemusic4kids.org)

## **Parent Institute for Quality Education (PIQE)**

To provide families with the knowledge and skills to partner with schools and communities to ensure their children achieve their full potential.  
[piqe.org](http://piqe.org)

## **Ready to Start (R2S)**

Setting up students for educational success by preparing children with no or limited preschool or transitional kindergarten experience for kindergarten, through an intensive five-week summer program.  
[kern.org](http://kern.org)

## **South Kern Sol**

Elevating youth's voice for health and racial equity through Kern County's non-profit, non-partisan youth-led newsroom.  
[southkernsol.org](http://southkernsol.org)

## **Southwest Community Nursery School**

A parent participation co-op where love and learning go hand in hand.  
[southwestcommunitynurseryschool.com](http://southwestcommunitynurseryschool.com)

## **Taft College Foundation**

Dedicated to supporting student success through fundraising and the development of community relationships.  
[taftcollege.edu/foundation](http://taftcollege.edu/foundation)

## **TALC (The Agape Love Connection)**

Providing quality educational opportunities for local children, as well as children in Liberia, West Africa.  
[facebook.com/TALCworks](https://facebook.com/TALCworks)



## **R.M. Pyles Boys Camp**

To provide at-risk boys with the opportunity to attend a camp that promotes character development, positive male mentoring and education.  
[pylescampa.org](http://pylescampa.org)

## **ShePower Leadership Academy**

To produce a Power Circle of female civic and business leaders deriving from socially and economically disadvantaged circumstances.  
[shepoweracademy.org](http://shepoweracademy.org)

## **Teen Success, Inc.**

To transform the lives of underserved teen mothers and their children by helping them become educated, self-sufficient, valued members of society.  
[teensuccess.org](http://teensuccess.org)

## **The Contreras Foundation**

To promote family unity through public fundraising events for Kern County education and community benefit.  
[thecontrerasfoundation.com](http://thecontrerasfoundation.com)



### **Transitional Youth Mobilizing for Change**

To empower youth to realize their potential and become assets to their community through learning, research, and action.

[tyme4change.org](http://tyme4change.org)

### **Valley PBS**

Enriches, educates and strengthens our diverse Valley community through the power of public service media.

[valleypbs.org](http://valleypbs.org)

### **Writers of Kern**

Bringing together professional and novice writers in a creative and supportive atmosphere to help them gain experience and become published writers.

[writersofkern.com](http://writersofkern.com)

### **Youth 2 Leaders Education Foundation**

To unlock the power of higher education.

[y2lef.org](http://y2lef.org)

### **Youth Connection, Inc.**

Redirection by Connection.

[facebook.com/kernyouthconnection](https://facebook.com/kernyouthconnection)

### **Youth for Christ of Kern County**

Meeting the needs of young people physically, mentally, socially, and spiritually throughout Kern County.

[yfckern.org](http://yfckern.org)



## *The benefits of registering with Kern Community Foundation*

Kern Community Foundation's Non-profit Strengthening Initiative begins with the agencies we serve: community based organizations operating in Kern County. These are the very same agencies you see listed in this Community Giving Guide.

Knowing that greater visibility is part of nonprofit strengthening and requires commitment to transparency and accountability, all the listed agencies have completed the following two-step process:

- Registered with Kern Community Foundation through our online registration and grants application portal at [kernfoundation.org](http://kernfoundation.org); and
- Achieved a transparency rating of Silver or higher on GuideStar.org, the world's largest online database on nonprofits that many potential donors and grantors turn to when considering supporting a 501(c)(3) corporation.

In addition to being listed in the Community Giving Guide and on the Nonprofit Search page of Kern Community Foundation's website, agencies are also eligible to participate in a variety of programs and services:

- Capacity building through the Foundation's competitive grant opportunities and other community initiatives, including our annual online crowd funding and volunteer recruitment event, Give Big Kern;
- Participation in our nonprofit speaker series, Philanthropy on Tap—a partnership with the Greater Bakersfield Chamber of Commerce that allows nonprofits to showcase their work to up-and-coming local philanthropists from our business community; and
- Sustainability through our Jumpstart Fundraising Technical Assistance Program, endowment building, planned giving and Crop Gifting programs that can become a long-term or even a permanent source of revenue for hardworking organizations.

The Community Giving Guide includes descriptions of nonprofit organizations located in Kern County, along with a link to their website or social media page. They are organized by field of interest:

- Arts and Culture
- Education and Youth Development
- Environment and Animals
- Health
- Human Services and Community Benefit

Building a thriving economy and a vibrant culture in Kern County depends on preparing students for the workforce. Growing the number of students who earn college degrees and certificates and obtain well-paying jobs helps ensure that future.

But here's the challenge we're facing: fewer than 1 out of 6 Kern County residents 25 and older have a bachelor's degree or higher level of education, compared to 1 out of 3 California residents.

Reality check: Many local students have the ability and desire to succeed in college but often lack access to guidance and financial resources that can support their high school-to-college-to-career transition.

Kern Futures is a long-term, large-scale commitment to provide Kern County students the opportunity to achieve their college and professional goals. By partnering with local educational institutions and private philanthropists, Kern Community Foundation helps students navigate the complicated road to higher education, persist through college, and earn a degree or certificate. Join us in changing the future of Kern County by creating strategic, needs-based scholarships for our youth – contribute to the Scholarships Together Fund at Kern Community Foundation. Contact us at [info@kernfoundation.org](mailto:info@kernfoundation.org).

# Environment and Animals

## Alpha Canine Sanctuary

To provide a no-kill haven for abused, abandoned and disabled dogs through programs of rescue, care of life, adoption and spay/neuter assistance.

[alphacanines.org](http://alphacanines.org)

## Bakersfield Pet Food Pantry

Helping our community by providing temporary assistance of emergency pet food to those suffering financial hardships, such as low income seniors, disabled persons, and homeless individuals.

[bakersfieldpetfoodpantry.org](http://bakersfieldpetfoodpantry.org)

## Bakersfield SPCA

Advocating for the general welfare and humane treatment of animals through shelter, prevention of pet overpopulation and adoption.

[bakersfieldspca.org](http://bakersfieldspca.org)

## California City Animal Outreach Foundation

Supporting the California City Animal Shelter and community companion animals, and promoting extended rescue and adoption, spay/neuter and educational awareness.

[calcityaof.wixsite.com/ccaoaf](http://calcityaof.wixsite.com/ccaoaf)

## California Living Museum Foundation (CALM)

To display and interpret native California animals, plants fossils and artifacts for education, recreation, conservation and research.

[calmzoo.org](http://calmzoo.org)

## Critters Without Litters

Helping pets and pet owners with low-cost spay/neuter services, as we seek to end the preventable euthanasia of adoptable pets in Kern County.

[CrittersWithoutLitters.org](http://CrittersWithoutLitters.org)

## Friends of the Kern County Animal Shelters Foundation

Dedicated to the overall safety and wellbeing of all animals, and to providing valuable resources for the rescue of homeless cats and dogs in Kern County.

[friendsofkernshelters.org](http://friendsofkernshelters.org)

## Friends of the Hatchery

Uniting an all-volunteer group of concerned local citizens who work to ensure the wellbeing and future of the Kern River Hatchery.

[friendsofthekernriverhatchery.org](http://friendsofthekernriverhatchery.org)

## H.A.L.T. (Helping Animals Live Tomorrow) Rescue

Rescuing homeless dogs and cats and finding them the loving homes they deserve.

[haltrescue.org](http://haltrescue.org)

## Have a Heart Humane Society

To provide low cost spay and neuter programs for the public of all incomes.

[haveahearthumanesociety.org](http://haveahearthumanesociety.org)

## High Sierra Wild Horse Sanctuary

Providing a safe haven for wild-born mustangs, burros and domestic equines who have lost their homes.

[hswhs.org](http://hswhs.org)

## Keep California Beautiful

Dedicated to alternative waste management, beautification, community networking and outreach.

[keepcabeautiful.org](http://keepcabeautiful.org)

## Keepers of the Kern

Dedicated to restoring, protecting, and preserving the quality and uniqueness of the Wild and Scenic Kern River.

[keepersofthekern.org](http://keepersofthekern.org)

## Kern Green

Providing education and awareness to demonstrate the social, economic and environmental benefits of integrating green practices.

[kerngreen.org](http://kerngreen.org)



## Kern River Conservancy

To implement educational initiatives focused on conservation, native trout preservation and community outreach.

[kernriverconservancy.org](http://kernriverconservancy.org)

## Kern River Corridor Endowment and Holding Co. Inc.

Dedicated to the habitat restoration education, outreach and recreational opportunities at the Panorama Vista Preserve.

[panoramavista.org](http://panoramavista.org)

## Kern River Valley Heritage Foundation

Protecting the natural, scenic, agricultural and historic lands of the Kern River Valley through stewardship, restoration and education.

[krvhf.org](http://krvhf.org)

## Make a difference

**\$500** helps Lifesavers, Inc. purchase additional sanctuary land so that rescued horses can live in peace and freedom.

**\$300** allows Alpha Canine Sanctuary to spay or neuter a homeless dog and pay for six weeks of care before adoption.

**\$250** supports Kern Green's Green Business Certification Program, whereby businesses are empowered to adopt green practices that reduce their environmental impact while saving them money.

**\$150** feeds 40 birds for one month at Pacific Waterfowl Rescue.



**\$100** makes it possible for the Kern River Conservancy to purchase trash and portable toilet amenities for campsites along the Wild and Scenic Kern River, to help keep it and the wildlife it sustains clean and safe from trash and human waste.



### Licks of Love

To teach students empathy, compassion, kindness, communication, anti-bullying and restorative justice through classroom courses, utilizing rescued and rehabilitated working dogs.

[licksoflove.org](http://licksoflove.org)



### Lifesavers, Inc.

Dedicated to saving wild and domestic horses from abuse, neglect and slaughter, and providing healing programs to the public.

[wildhorserescue.org](http://wildhorserescue.org)

### Marley's Mutts Dog Rescue

To rescue, rehabilitate and rehome discarded or abused and forgotten animals.

[marleymutts.org](http://marleymutts.org)

### Meow Co.

To save abandoned cats and kittens from euthanasia, and find them loving homes.

[meowco.org](http://meowco.org)

### Pacific Waterfowl Rescue

Dedicated to rescuing, rehabilitating, and rehoming domestic ducks and geese, and sharing how special these birds truly are.

[pacificwaterfowlrescue.org](http://pacificwaterfowlrescue.org)

### Project Clean Air

To enhance the community by improving air quality through education and collective action.

[projectcleanair.us](http://projectcleanair.us)

### Quail Springs Permaculture

Empowering youth and adults of all backgrounds with the knowledge, inspiration and skills essential to social and ecological health.

[quailsprings.org](http://quailsprings.org)

### Sand Creek Rescue

An all-breed horse rescue that gives hope to those that have no hope: horses that are the least likely to be saved.

[sandcreekrescue.org](http://sandcreekrescue.org)

### Sequoia ForestKeeper

To protect and restore the ecosystems of the southern Sierra Nevada – including both the Sequoia National Forest and the Giant Sequoia.

[sequoiaforestkeeper.org](http://sequoiaforestkeeper.org)

### Sequoia Riverlands Trust

To inspire love and lasting protection for important lands.

[sequoiariverlands.org](http://sequoiariverlands.org)

### Southern Sierra Research Station

To promote, facilitate, and disseminate biological research that informs conservation decisions and environmental policy.

[southernsierraresearch.org](http://southernsierraresearch.org)

### Tejon Ranch Conservancy

Protecting, restoring and enhancing the native biodiversity and ecosystem values of the Tejon Ranch and Tehachapi Range to benefit future generations.

[tejonconservancy.org](http://tejonconservancy.org)

### The Cat People

To end the needless suffering of felines in Kern County through rescue, rehabilitation, adoption, community education, and low-income assistance programs.

[thecatpeople.org](http://thecatpeople.org)

### The Wildlands Conservancy's Wind Wolves Preserve

To preserve the beauty and biodiversity of the earth and to provide programs so that children may know the wonder and joy of nature.

[wildlandsconservancy.org](http://wildlandsconservancy.org)

### Whiskers Paws Hooves and Claws Animal Advocacy

Dedicated to horse rescue and rehabilitation, specializing in livestock and equine fostering, emergency response, and community service.

[hooves-paws.org](http://hooves-paws.org)



Since 2016, Kern County residents have come together in the true spirit of generosity for which they are known, to celebrate giving to local nonprofits through Give Big Kern, our county's official Day of Giving, observed on the first Tuesday in May.

Hosted by Kern Community Foundation, Give Big Kern was originally conceived as a 24-hour crowd-funding campaign through which nonprofits could raise hard-to-come-by unrestricted dollars to support their efforts, as well as sign up volunteers willing to donate their time and talents.

Wanting to engage the community even more, the Foundation now plans bigger Give Big Kern events, with a month-long celebration of giving that incorporates National Volunteer Week in mid-April, elicits participation from generous business partners, and culminates on Give Big Kern Day.

Participating agencies receive fun prizes for most dollars raised, most volunteer hours pledged, 100% board member participation, and more!

Just in its first three years, Give Big Kern has helped more than 125 nonprofits raise over \$551,000, and receive close to 141,000 pledged volunteer hours from thousands of community donors and volunteers.

Give Big Kern's official website is [givebigkern.org](http://givebigkern.org). Follow us on Facebook, Twitter and Instagram @GIVEBIGKERN.

And, as Give Big Kern's Official Mascot since 2018, Billy the Give Big Goat likes to say, "Give B-i-i-i-g!"



## Cumulative Grantmaking

	1999	2000	2001	2002	2003	2004	2005	2006	2007
	\$6,611	\$70,811	\$126,491	\$239,865	\$578,587	\$802,657	\$1,098,711	\$1,991,518	\$2,854,325

# Kern Community Foundation through its First 20 Years:

A Timeline of Turning our Community's Generosity into Impact

## 1999

After several years of planning and discussions, The Kern County Community Foundation is established. Grants awarded: \$6,600.

## 2000

Awards \$50,000 in grants to 52 recipients in first competitive grant round.

## 2001



Noel Daniells, a retired partner of the accounting firm Daniells, Phillips, Vaughan & Bock, is hired as President and CEO.

David Parker is hired as Executive Vice President.



## 2002

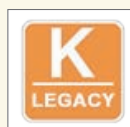
Joins the League of California Community Foundations.



Establishes Nonprofit Resource Center.

## 2003

Launches Legacy Society to recognize estate gifts.



## 2004

Begins operating under current name, Kern Community Foundation.



## 2005

Establishes the Women's and Girls' Fund at Kern Community Foundation to transform the lives of women and girls in Kern County by mobilizing the power and passion of women working together.

## 2006

Receives accreditation from the National Standards for U.S. Community Foundations.



## 2009



Celebrates a decade of service to Kern County.

## 2010

Introduces grant programs KernArts Now! and KernHealth Now!

Jeff Pickering is appointed President and CEO of the Foundation after conducting a national search.



## 2011



Issues "Transfer of Wealth in Kern County," a report to the community detailing that by 2060, there will be a transfer of wealth of more than \$80 billion between generations in Kern County families.

Launches Nonprofit Search.

## 2012



Recognizes Marvin and Nadene Steinert with the very first "Spirit of Philanthropy" Award.

## 2013



Establishes Kern Real Estate Foundation to help charitably minded individuals and families turn appreciated real estate into liquid assets and support the causes they care about.



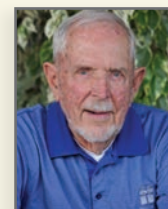
Issues first edition of the "Charity Giving Guide," a listing of 102 nonprofits registered with Kern Community Foundation.

Is ranked 59th among the top 100 most active grantmakers nationwide for awarding more than \$1.6M in grants in 2013.

Launches the YouTube Channel Kern Live! and the Philanthropy on Tap series to increase the visibility of participating nonprofits.



## 2014



Celebrates 15th Anniversary and presents Donald Barnes with the "Spirit of Philanthropy" Award.

## Total Assets

	1999	2000	2001	2002	2003	2004	2005	2006	2007
	\$336,430	\$465,575	\$642,402	\$2,020,373	\$2,793,121	\$5,163,849	\$7,563,340	\$12,010,641	\$14,449,363

2008	2009	2010	2011	2012	2013	2014	2015	2016	2017	2018
\$4,442,220	\$5,970,852	\$6,969,975	\$8,053,854	\$8,825,802	\$10,468,471	\$13,307,505	\$14,384,333	\$15,671,067	\$18,445,389	\$19,974,359

## 2015

Launches Nonprofit Endowment Partnership.

Opens online scholarship application portal, and offers custom student services to assist scholarship recipients.

Kristen Beall is appointed President and CEO of the Foundation.



Recognizes Jack and Mary Lou Thomson with the "Spirit of Philanthropy" Award.

Produces "What is a Community Foundation?" video to build brand awareness.



## 2016

Introduces Kern County's very own online giving day, Give Big Kern, to be observed on the first Tuesday in May.



Recognizes Judith Chase with the "Spirit of Philanthropy" Award.

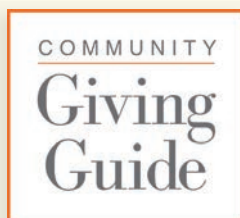
Launches Kern Futures, a long-term, large-scale commitment to increase educational attainment in Kern County.



## 2017

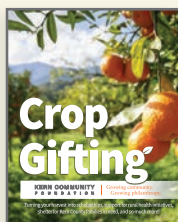
Publishes the third edition of the "Charity Giving Guide" under its new name, the "Community Giving Guide," featuring more than 200 nonprofit agencies registered with Kern Community Foundation. The nonprofit listing is also printed in the December issue of Bakersfield Life Magazine.

Is ranked 23rd among the top 100 most active grantmakers nationwide for awarding more than \$2.7M in grants in 2017.



## 2018

Give Big Kern breaks records for most dollars raised (\$231,000), most agencies participating (119), most donors engaged (1,779) and most volunteer hours pledged (52,000).



Introduces Crop Gifting, a way for farmers to turn an unsold crop into money for charity by transferring title of the crop to the Foundation, and

then investing the net proceeds from the sale of the crop into a donor advised fund or existing fund of their choice.

## 2019

Launches the Jumpstart Fundraising Technical Assistance Grant Program in partnership with Network for Good and the Kern County Board of Supervisors to help local nonprofits learn effective fundraising practices.



**A big thanks to the following individuals who have helped grow philanthropy in Kern County over the past 20 years as Kern Community Foundation Board Members:**

John Allen, Paul Anderson, A.J. Antongiovanni\*, Robert A. Barnes, Kristen Beall, Steve Boyle\*, Keith Brice\*, John Brock, Jr., Morton Brown\*+, Bruce F. Bunker\*+, Judith Chase\*, Jason Cohen, Patrick J. Collins, Chandrasekhar Commuri, Noel Daniels+, Curtis Darling+, Sergio DeCastro, Joan DeZember+, Joseph E. Drew, Kevin Findley, Jennifer C. Floyd, Jeffrey A. Gutierrez, Angelo Haddad, Jack Hardisty, Susan Hemme, Ed L. Hickman, Susan D. Hopper, Midge Boydston Jimerson, George A. Johnson, Duane A. Keathley, Claude P. Kimball+, Daniel A. Lacey, Bryan Lynn, George F. Martin, Judith McCarthy\*, Kathy Miller, Garrett Ming\*, Ginger Moorhouse+, John F. Nilon, Nancy L. Oehler, Michael Olague, Robert B. Ortiz, Jr., Barbara Patrick, Jeff Pickering, John G. Pryor\*, Larry E. Reider, Linda R. Robinson, Jeanette Rogers, Vincent Rojas, Jr., Marjorie Rump+, Brent Rush, Carlos Sanchez, Stephen L. Sanders, Mary K. Shell, Gayland Smith\*, Janice Smith, Patricia M. Smith, Marvin Steinert, Jon Stuebbe, Robert S. Tafoya, Kate Tandy, Heather Butler Taylor, Mary Lou Thomson+, Gene Voiland\*, Terence J. Werdel, Diane White\*, and Rob C. Yraceburu.

\*Served as Board Chair  
+Founding Director

2008	2009	2010	2011	2012	2013	2014	2015	2016	2017	2018
\$12,260,100	\$13,364,900	\$13,537,616	\$13,063,541	\$16,076,267	\$18,409,539	\$18,561,186	\$17,456,037	\$18,772,683	\$21,105,994	\$21,447,000

# Health

## Advanced Center for Eyecare

To provide high quality eyecare services to the underserved and uninsured population of Kern County.

[acecares.org](http://acecares.org)

## Alzheimer's Association

To eliminate Alzheimer's through research; provide support for all affected; and to reduce dementia through brain health.

[alz.org/socal](http://alz.org/socal)

## Alzheimer's Disease Association of Kern County, Inc. (ADAKC)

To improve the lives of Kern County residents affected by Alzheimer's disease and related disorders.

[adakc.org](http://adakc.org)

## American Cancer Society

To save lives, celebrate lives and lead the fight for a world without cancer.

[cancer.org](http://cancer.org)

## American Heart Association

To build healthier lives free of cardiovascular diseases and stroke.

[heart.org](http://heart.org)

## Baby Café

Providing breastfeeding support and peer networking for families with breastfeeding babies.

[babycafeusa.org](http://babycafeusa.org)



## Bakersfield Birth Network

Providing families with positive birth options through education and resources.

[bakersfieldbirthnetwork.com](http://bakersfieldbirthnetwork.com)

## Bakersfield Memorial Hospital Foundation

To contribute to the quality of life in our community by funding healthcare technology and services at Memorial Hospital.

[supportbakersfield.org](http://supportbakersfield.org)

## Bakersfield Pregnancy Center

To serve Kern County by empowering individuals to make healthy, life-affirming choices regarding pregnancy and sexual health.

[bpcpartners.org](http://bpcpartners.org)

## Bakersfield Recovery Services (Jason's Retreat/Capistrano Community for Women)

Assisting our clients in their recovery from substance abuse to become happy, healthy and productive citizens of our community.

[jasonsretreat.com](http://jasonsretreat.com)

## Bike Bakersfield

To promote bicycling as a safe, fun and environmentally friendly means of everyday transportation.

[bikebakersfield.org](http://bikebakersfield.org)

## Central Valley Lactation Association

Providing educational opportunities for local lactation professionals, and a forum for them to exchange clinical information, and connect and collaborate professionally.

[centralvalleylactation.org](http://centralvalleylactation.org)

## Clinica Sierra Vista

Providing high quality, comprehensive primary and preventative healthcare services at the most efficient cost to underserved populations in Kern, Fresno and Inyo Counties.

[clinicasierravista.org](http://clinicasierravista.org)

## Foundation for Movement

To provide improved strength, mobility, function and life through exercise for people with physical limitations.

[foundationformovement.org](http://foundationformovement.org)

## Friends of Mercy Foundation

To raise and administer philanthropic contributions in support of Mercy Hospitals in Bakersfield California.

[supportfriendsofmercy.org](http://supportfriendsofmercy.org)

## Health Through Wholeness

We provide challenging, fun programs for teens and assert that self-esteem and a sense of accomplishment are vital to this age group's overall health.

[screambakersfield.org](http://screambakersfield.org)

## Hina Patel Foundation

To increase Sickle Cell awareness and provide education and services to enhance the wellbeing of affected people and their families.

[hinapatelfoundation.org](http://hinapatelfoundation.org)



## Hoffmann Hospice

To celebrate the sanctity of life, provide compassionate end-of-life care and comfort the grieving.

[hoffmannhospice.org](http://hoffmannhospice.org)

## Make a difference

**\$2,500** provides a chemotherapy chair for Kern Medical Foundation.

**\$1,000** enables Pacific Health Education Center to sustain its campaign in Kern County public schools against the use of tobacco, drugs, alcohol and other harmful substances.

**\$500** can be applied toward the funding of research for the prevention, treatment or cure of Alzheimer's disease by the Alzheimer's Association.

**\$100** helps Bakersfield Recovery Services, Inc. continue to give the best care to Kern County residents that struggle with substance abuse issues.

**\$75** pays for 10 exercise classes with Foundation for Movement for a person with physical limitations.



### **Kern Medical Foundation**

Proudly partnering with our community to support Kern Medical's life-changing and life-saving programs.

[kernmedicalfoundation.com](http://kernmedicalfoundation.com)

### **Kern Valley Hospital Foundation**

To provide financial support to the Kern Valley Hospital by funding and supporting programs that will have a positive impact on patients and our community.

[kvhd.org](http://kvhd.org)

### **Learning Dynamics, Inc.**

To make psychological and educational support affordable and attainable for all ages.

[learningdynamicsinc.org](http://learningdynamicsinc.org)

### **Leukemia & Lymphoma Society - Central California**

We exist to find cures and ensure access to treatments for blood cancer patients, and are saving lives not someday, but today.

[lls.org/cca](http://lls.org/cca)

### **Links for Life**

To provide breast cancer diagnosis, services and support for Kern County women in need.

[linksforlife.org](http://linksforlife.org)

### **National Multiple Sclerosis Society, Southern California and Nevada Chapter**

To stop MS, restore function and end MS forever.

[nationalmssociety.org](http://nationalmssociety.org)

### **Olivia's Heart Project**

To increase awareness about sudden cardiac arrest in children and young adults in order to keep young hearts beating.

[oliviasheartproject.org](http://oliviasheartproject.org)

### **Omni Family Health**

Committed to improving the health of our communities by providing the highest quality healthcare to everyone.

[omnifamilyhealth.org](http://omnifamilyhealth.org)

### **Optimal Hospice Foundation**

To ensure families have access to hospice care by filling the gap for patients who are uninsured or underinsured.

[optimalhospicefoundation.com](http://optimalhospicefoundation.com)

### **Pacific Health Education Center**

To empower individuals, organizations and communities to move toward a more optimal state of high-level wellness.

[pacifichealth.org](http://pacifichealth.org)

### **Partners in Care Foundation**

To shape the evolving health system by developing and spreading high-value models of community-based care and self-management.

[picf.org](http://picf.org)

### **Rising Star Riders (formerly known as Kelly's Therapeutic Riders)**

Dedicated to serving the needs of children and adults with physical and/or emotional challenges through horseback riding, therapeutic horseback riding and horse management lessons.

[rsriders.org](http://rsriders.org)

### **Thumbs Up Cancer Down**

To provide support and encouragement to people with cancer and those going through treatment.

[thumbsupcancerdown.com](http://thumbsupcancerdown.com)

### **Tigerfight Foundation**

To provide financial assistance to Kern County families who are currently being treated for any form of pediatric blood cancer.

[tigerfight.org](http://tigerfight.org)

### **Valley Caregiver Resource Center**

Assisting seniors and caregivers with the challenges that accompany the aging process.

[valleycrc.org](http://valleycrc.org)

### **Valley Children's Healthcare Foundation**

To generate funds to support the goals of Valley Children's Healthcare and its affiliated entities.

[valleychildrens.org/foundation](http://valleychildrens.org/foundation)

### **Valley Fever Americas Foundation**

To fund a vaccine and a cure for Valley Fever as well as to raise public awareness about this disease.

[valleyfever.com](http://valleyfever.com)



## **Jumpstart**

Offered as a true public-private partnership among Kern Community Foundation, Network for Good, and the Kern County Board of Supervisors, "Jumpstart" is a competitive grant that in its roll-out year, 2019, will allow up to five Kern County nonprofits—one per each of Kern's Supervisorial Districts—the opportunity to receive 12 months of customized technical assistance training and easy-to-use all-in-one software from fundraising technology and training giant Network for Good.



With Jumpstart, participating nonprofits commit to making a skin-in-the-game investment of time and money (an affordable \$79 per month during the program's duration) toward implementing a revenue-generating model that weds the high-touch nurturing and cultivation of long-term relationships with individual donors to the high-tech use of donor development software to help them diversify and expand their funding streams.

Jumpstart is truly the type of Non-profit Strengthening Kern Community Foundation is committed to delivering to Kern's hard-working nonprofits so they can work smarter, not harder.

Questions?

Write to [info@kernfoundation.org](mailto:info@kernfoundation.org).

# Human Services and Community Benefit

## **ACLU Foundation of Southern California**

Defending the fundamental rights outlined in the United States Constitution and the Bill of Rights.

[aclusocal.org](http://aclusocal.org)

## **AHH (A Helping Hand)**

Helping people to help themselves.

[ahelpinghand.org](http://ahelpinghand.org)

## **Alliance Against Family Violence and Sexual Assault**

To stop domestic violence and sexual assault in Kern County and assist survivors in reclaiming their lives.

[kernalliance.org](http://kernalliance.org)

## **ALPHA House: A Place for New Beginnings**

To provide a safe and nurturing environment for battered and homeless women and their children while presenting them with options for a healthy lifestyle.

[alphahouse.us](http://alphahouse.us)



## **Alternatives to Violence Project**

To empower people to lead nonviolent lives through affirmation, respect for all, community building, cooperation and trust.

[avpcalifornia.org](http://avpcalifornia.org)

## **American Red Cross - Kern Chapter**

To prevent and alleviate human suffering in the face of emergencies by mobilizing the power of volunteers and the generosity of donors.

[redcross.org](http://redcross.org)

## **Anchor of Hope Outreach Center**

Alleviating hunger, unemployment and homelessness by providing food, clothing, education, transportation, workforce development, and social service referrals to those in need.

[anchorofhopeoutreachcenter.org](http://anchorofhopeoutreachcenter.org)

## **Aspiranet**

Envisioning a world in which all children and youth are loved and cared for, and all families have the resources to thrive.

[aspiranet.org](http://aspiranet.org)

## **Assistance League of Bakersfield**

To serve the community through ongoing philanthropic programs.

[assistanceleague.org/Bakersfield](http://assistanceleague.org/Bakersfield)

## **Autism Society-Kern Autism Network**

To provide support, awareness, information and education to families and the public in Kern.

[kernautism.org](http://kernautism.org)

## **Bakersfield ARC**

To build a stronger community by helping people with intellectual and developmental disabilities achieve individual goals for a better life.

[barc-inc.org](http://barc-inc.org)

## **Bakersfield East Rotary Foundation**

Supporting education and health locally and internationally through Rotary's Avenues of Service.

[portal.clubrunner.ca/2817](http://portal.clubrunner.ca/2817)

## **Bakersfield Homeless Center**

To provide support and resources to families and individuals in crisis while helping them to achieve their highest level of self-sufficiency.

[bakhc.org](http://bakhc.org)

## **Bakersfield Senior Center**

To provide assistance and educational, nutrition and fellowship activities to senior citizens of Bakersfield, California, so they can live long and stronger, healthy lives.

[bakersfieldseniorcenter.org](http://bakersfieldseniorcenter.org)

## **Bakersfield Sikh Women's Association**

Dedicated to the principle of oneness through community — regardless of gender, race, or socioeconomic status.

[facebook.com/bakersfieldsikhwomen-sassociation](https://facebook.com/bakersfieldsikhwomen-sassociation)

## **Be Finally Free**

To restore and equip those impacted by crime, incarceration, and poverty by providing education, instilling life skills and giving hope to overcome circumstances.

[befinallyfree.org](http://befinallyfree.org)

## **Blessing Box Foundation**

To provide nutritional assistance to those who are food insecure in Kern County by growing a network of community-sponsored 24-hour nutritional access points.

[blessingboxfoundation.org](http://blessingboxfoundation.org)

## Make a difference



**\$1,500** sends one veteran on an all-expenses-paid trip (flight, hotel, meals) to Washington, D.C. with Honor Flight Kern County, to enjoy seeing memorials erected in honor of our fighting forces.

**\$500** buys an iPad for PathPoint's day program, so that clients who are non-verbal can learn to communicate.

**\$160** pays for one day's meal for approximately 67 seniors at Bakersfield Senior Center.

**\$100** allows Aspiranet to provide basic necessities (towels, sheets, bedding, small appliances) for one emancipating youth who is leaving foster care and stepping into the brave new world of adulthood—and his or her own apartment.

**\$28** goes a long way for Catholic Charities, which can use the money to purchase a bag of food that lasts from five to seven days for a family of four.



### California Family Counseling Network, Inc.

To sponsor special events for charitable purposes for the psychological and mental health care of families, especially those that are underserved.

[cfcninc.org](http://cfcninc.org)

### California Recreation Foundation

Furthering California community development and good citizenship through recreation.

[onespadeyouthpackers.org](http://onespadeyouthpackers.org)



### California Rural Legal Assistance, Inc.

To fight for justice and individual rights alongside the most exploited communities of our society.

[crla.org](http://crla.org)

### California Veterans Assistance Foundation

To serve homeless, at risk and low income veterans, and to restore and improve lives by alleviating homelessness through information and advocacy.

[cavaf.org](http://cavaf.org)

### Casa Esperanza Transitional Home for Women

Through an innovative and holistic approach, providing a home for homeless women and children transitioning to independence.

[esperanzabakersfield.org](http://esperanzabakersfield.org)

### CASA (Court Appointed Special Advocates) of Kern County

To speak on behalf of abused and neglected children in the foster care process, through the use of highly trained volunteers.

[kerncasa.org](http://kerncasa.org)

### Catholic Charities of Bakersfield

Respecting the presence of God among us, we serve, advocate for and empower those in need.

[ccdof.org](http://ccdof.org)

### Central California Food Bank

To fight hunger in Central California by gathering and distributing food to those in need.

[ccfoodbank.org](http://ccfoodbank.org)



### Community Action Partnership of Kern (CAPK)

To provide and advocate for resources that will empower members of the communities we serve to be self-sufficient.

[capk.org](http://capk.org)

### Covenant Community Services

Providing hope and love to restore lives and transform generations.

[covenantcs.net](http://covenantcs.net)

### Desert Area Resources and Training

To provide service to people who have disabilities or other special needs, so they can pursue their dreams.

[dartontarget.org](http://dartontarget.org)

### Dolores Huerta Foundation

To create a network of organized communities pursuing social justice through systemic and structural transformation.

[doloreshuerta.org](http://doloreshuerta.org)

### Dress for Success Bakersfield

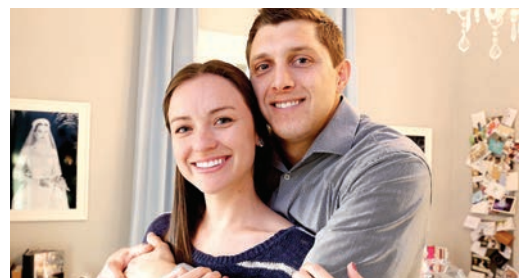
Dedicated to empowering women to achieve economic independence by providing support, skills training and professional attire.

[bakersfield.dressforsuccess.org](http://bakersfield.dressforsuccess.org)

### Exceptional Family Center

To celebrate the success of families and their children with an intellectual and/or developmental disability through collaboration, education, empowerment and mutual support.

[kernefc.org](http://kernefc.org)



### Fairy Godmother Foundation

Serving Bakersfield area couples who have delayed their wedding because tragic circumstances forced them to redirect wedding funds to cover medical bills.

[fairygodmotherfoundation.org](http://fairygodmotherfoundation.org)

### Faith in the Valley - Kern

Building the collective power to make California's Central Valley a place where people can have safe lives rooted in racial, economic, environmental and health equity for all.

[faithinthevalley.org](http://faithinthevalley.org)



# Human Services and Community Benefit



## **Farmworker Institute of Education and Leadership Development**

To promote social and economic prosperity in rural communities through education.

[farmworkerinstitute.org](http://farmworkerinstitute.org)

## **Flood Bakersfield Ministries**

Providing permanent housing and supportive services to ensure housing stability for the street homeless population.

[floodbako.com](http://floodbako.com)

## **Foster Parent Training Center for Homes of Hope**

Striving to meet the unique needs of those we serve in a professional, comprehensive, caring and gracious manner, because no child is beyond hope.

[homesofhopebakersfield.com](http://homesofhopebakersfield.com)

## **Foundation for Second Chances**

Utilizing hands-on education, mentoring, health awareness and community service to maximize the potential of youth.

[ffscinc.org](http://ffscinc.org)

## **Garden Pathways, Inc.**

Transforming lives from the inside out through loving, mentoring relationships.

[gardenpathways.org](http://gardenpathways.org)

## **Global Family Care Network**

To protect and restore young, at-risk girls through girls' empowerment clubs and a homeless/runaway youth shelter.

[globalfamily.care](http://globalfamily.care)

## **Golden Empire Gleaners**

To help alleviate hunger and provide food for needy persons of all ages by collecting and distributing food and agricultural products that might otherwise go to waste.

[goldenempiregleaners.com](http://goldenempiregleaners.com)

## **Goodwill Industries of South Central California**

To provide work opportunities and skills development to people with barriers to employment.

[thegoodwill.org](http://thegoodwill.org)

## **Got Ur 6**

To promote the physical, intellectual, emotional, social and economic wellbeing of all citizens of Boron and surrounding areas. To empower all.

[gotur6.net](http://gotur6.net)

## **Greater Bakersfield Legal Assistance**

To promote social change and justice by providing high quality legal services to the low-income community.

[gbla.org](http://gbla.org)

## **Habitat for Humanity Golden Empire**

Seeking to put God's love into action to bring people together to build homes, communities and hope.

[habitatbakersfield.org](http://habitatbakersfield.org)

## **H.E.A.R.T.S. Connection**

To enhance the quality of life for people with special needs through a family resource center that symbolizes professionalism, dignity, compassion and respect.

[heartsfrc.org](http://heartsfrc.org)

## **Henrietta Weill Memorial Child Guidance Clinic**

Providing mental health and substance abuse services and the resources necessary to promote recovery for children, adults and families.

[hwmcgc.org](http://hwmcgc.org)

## **Honor Flight Kern County**

To honor and send America's veterans to Washington, D.C., to see memorials built in THEIR honor - at no cost to the veteran.

[honorflightkerncounty.org](http://honorflightkerncounty.org)

## **Housing and Opportunity Foundation of Kern**

To empower families to become self-sufficient and improve their quality of life through education and support programs offered at affordable housing sites.

[kernopportunityfoundation.org](http://kernopportunityfoundation.org)

## **Independence Through Grace**

Enhancing the lives of adults with intellectual disabilities through faith-based enrichment programs.

[itsgrace.org](http://itsgrace.org)

## **Independent Living Center of Kern County**

Empowering people with disabilities to grow creatively, professionally, and personally; and educating the community about disability-related issues.

[ilcofkerncounty.org](http://ilcofkerncounty.org)

## **Indian Wells Valley Economic Development Corporation**

To enhance the economic prosperity and quality of life in the Indian Wells Valley.

[iwvedc.com](http://iwvedc.com)

### **JJ's Legacy**

Educating Kern County residents and inspiring them to become registered organ and tissue donors, and providing compassionate support to donor and recipient families.

[jjslegacy.org](http://jjslegacy.org)

### **Junior League of Bakersfield**

Promoting voluntarism, developing the potential of women and improving the community through the effective action and leadership of trained volunteers.

[juniorleagueofbakersfield.org](http://juniorleagueofbakersfield.org)

### **KCBCC Development Foundation**

Advocating for the creation, development and economic growth of low-to-moderate-income communities and businesses in Kern County.

[kcbcc.info](http://kcbcc.info)

### **Kern Around the Clock Foundation**

Preventing premature or inappropriate institutionalization of at-risk elderly and functionally impaired adults through such services as case management, information and assistance.

[bakersfieldcare.com](http://bakersfieldcare.com)

### **Kern County Teen Challenge**

Providing youth, adults and families with an effective and comprehensive Christian faith-based solution to life-controlling drug and alcohol problems.

[teenchallenge.org](http://teenchallenge.org)

### **Kern River Valley Family Resource Center**

Providing support to local families with concerns ranging from medical, dental, parenting, and nutritional issues, to assistance with school readiness and referrals for utility costs.

[kernvilleusd.org](http://kernvilleusd.org)

### **Make-A-Wish Foundation of Central California**

Granting the wishes of children with life-threatening illnesses to enrich the human experience with hope, strength, and joy, creating a magical moment for all involved.

[centralca.wish.org](http://centralca.wish.org)



### **MARE Riding Center**

Providing therapeutic equine-assisted activities for people living with special needs and disabilities.

[mareridingcenter.com](http://mareridingcenter.com)

### **Mercy Housing California**

To create stable, vibrant and healthy communities by developing, financing and operating affordable, program-enriched housing for families, seniors and people with special needs.

[mercyhousing.org/california](http://mercyhousing.org/california)

### **Mexican American Opportunity Foundation**

To provide assistance and activities that promote self-sufficiency, while preserving the pride, values and heritage of the Mexican American culture.

[maof.org](http://maof.org)

### **Mosaic Counseling Center**

Providing comprehensive mental wellness services to Kern County residents and promoting the development of professional therapists in our community.

[iamamosaic.org](http://iamamosaic.org)

### **Mothers Against Drunk Driving (MADD), Kern County**

To end drunk driving, help fight drugged driving, support the victims of these violent crimes, and prevent underage drinking.

[madd.org](http://madd.org)

### **Mountain Communities Family Resource Center**

With our partners, we enrich families, enhance community and empower youth.

[mcfrc.com](http://mcfrc.com)

### **NAMI (National Alliance on Mental Illness) Kern County Chapter**

To provide support, education and advocacy for those with mental illness and their loved ones.

[namikerncounty.org](http://namikerncounty.org)

### **National Association for the Advancement of Colored People (NAACP) - Bakersfield**

To ensure political, educational, social, and economic equality of rights of all persons and to eliminate race-based discrimination.

[naacpbakersfield.com](http://naacpbakersfield.com)

### **North of the River Recreation Foundation**

To provide access and opportunity for all and to preserve the community's vitality by enhancing and expanding our facilities and programs.

[norfun.org](http://norfun.org)



### **Oildale Community Action Team**

Restoring hope in Oildale and Greater Bakersfield through community activities and partnerships with local government and community agencies.

[facebook.com/oildalecommunityactionteam](https://facebook.com/oildalecommunityactionteam)

### **Oildale Leadership Alliance**

Envisioning, connecting and empowering leaders for community transformation in Oildale.

[oildaleleadershipalliance.org](http://oildaleleadershipalliance.org)



# Human Services and Community Benefit

## **PATH (People Assisting the Homeless)**

To end homelessness for individuals, families and communities.

[epath.org](http://epath.org)



## **PathPoint**

Working with people with disabilities in Kern County to enhance workplace abilities, build life skills, and develop meaningful relationships.

[pathpoint.org](http://pathpoint.org)

## **Portrait of a Warrior Gallery**

Keeping the memories of the Kern County Fallen from post-9/11 service alive.

[kernwarriors.com](http://kernwarriors.com)

## **Reaching by Recycling**

Reaching out to those who are homeless, hungry, and otherwise hurting through funds raised by your donation of recyclable goods.

[reachingbyrecycling.wixsite.com](http://reachingbyrecycling.wixsite.com)

[reachingbyrecycling](http://reachingbyrecycling)

## **Rebuilding Together Kern County**

Repairing homes, revitalizing communities, rebuilding lives..

[rebuildingtogetherkerncounty.org](http://rebuildingtogetherkerncounty.org)

## **Ronald McDonald House Charities of Southern California**

To provide comfort, care and support to children and families in Southern California.

[rmhsc.org](http://rmhsc.org)

## **Self-Help Enterprises**

To work together with low-income families to build and sustain healthy homes and communities.

[selfhelpenterprises.org](http://selfhelpenterprises.org)

## **Special Olympics Southern California, Kern County**

To provide year-round sports training and competition in a variety of Olympic-type sports for children and adults with intellectual disabilities, thereby enriching and transforming their lives.

[sosc.org/kerncounty](http://sosc.org/kerncounty)

## **Stewards**

Advocating for homelessness prevention through connection to social services, resources, and acting as an appointed representative payee service.

[stewardsinc.org](http://stewardsinc.org)

## **The Center for Sexuality & Gender Diversity (formerly Gay & Lesbian Center of Bakersfield)**

Providing safe, supportive spaces and services to the gay, lesbian, bisexual and transgender community, and serving as a bridge to the greater community in Kern County.

[thecenterbak.org](http://thecenterbak.org)

## **The Hope Center**

Assisting low-income families and individuals in our community to move toward wholeness in Christ—physically, emotionally and spiritually.

[hopecenters.net](http://hopecenters.net)

## **The Mission at Kern County**

Providing an environment conducive to the physical, emotional and spiritual well-being of the people we serve.

[themissionkc.org](http://themissionkc.org)

## **The N.E.E.D.S. Center, Inc.**

To improve clients' health and wellbeing by distributing food, rent and utility assistance, clothing and household items, and hot meals.

## **The Plank Foundation**

To provide emergency funds in the areas of health, hunger and humanity, as well as funds for cancer care and treatment, and the needs of hospice organizations in Kern County.

[plankfoundation.com](http://plankfoundation.com)



## **The Center on Race, Poverty & the Environment**

To achieve environmental justice and healthy, sustainable communities through collective action and the law.

[crpe-ej.org](http://crpe-ej.org)

## **UFW Foundation**

To empower communities to ensure human dignity.

[sisepuede.org](http://sisepuede.org)



### United Way of Kern County

Mobilizing donors, volunteers, and advocates to improve the lives of Kern County residents.

[uwkern.org](http://uwkern.org)

### Valley Achievement Center

To empower individuals on the autism spectrum or with other developmental disabilities to achieve the highest quality of life.

[autism-vac.org](http://autism-vac.org)

### Volunteer Center of Kern County Inc

Mobilizing people and resources to deliver creative solutions to address community issues through volunteerism.

[volunteercenter.info](http://volunteercenter.info)

### WarmLine

Providing a peer mentor program for young mothers, focusing on healthy family relationships and positive parenting skills, and serving bilingual families with children 0-6 years old.

[e-warmline.org](http://e-warmline.org)

### Wellspring Kingdom Enrichment, Inc.

Providing opportunities for quality personal growth through life skills training, counseling, and coaching of personal vision and destiny.

[wellspring-journey.com](http://wellspring-journey.com)

### Women's Center-High Desert, Inc.

Providing direct client services for victims of domestic violence, sexual assault, and child abuse.

[womenscenterhighdesert.org](http://womenscenterhighdesert.org)



### Wounded Heroes Fund

Dedicated to serving Kern County's Transitioning Service Members by means of support and appreciation.

[thewoundedheroesfund.org](http://thewoundedheroesfund.org)

### Wounded Warrior Project

To honor and empower Wounded Warriors.

[woundedwarriorproject.org](http://woundedwarriorproject.org)



## Crop Gifting

If you are a local farmer, "planting" a part of your crop as money to help your community, and watching it grow tax-free, can be realized through crop gifting — making a donation of unsold crop inventory to Kern Community Foundation with the purpose of starting a fund, or growing an existing fund, that will then support charitable causes you care about.

### How does crop gifting work?

- Start by identifying your unsold crop inventory with no prior sale commitments.
- Inform Kern Community Foundation of your intended gift and sign an agreement to give up dominion and control of the crop at the time of transfer.
- The Foundation then assumes responsibility for transportation, processing, storage and marketing, to final sale.
- Net proceeds from the sale of your donated crop are put into your fund. This could be a Donor Advised Fund (DAF), which allows you to take your time deciding which charity or charities will benefit from your gift, or an already existing fund that supports causes you care about—for example, scholarships for youth or grants to nonprofits making a difference in the arts, the environment, animal welfare, disaster relief, and many other causes supported by Kern Community Foundation's more than 140 funds.

### What are some benefits of crop gifting?

Some of the benefits to you as a

### taxpayer include:

- Reducing the amount of profits earned from farming on your tax return the year you make the donation, as you avoid including the value of the donated crop as reported income, while...
- Being able to deduct the costs of production of the donated crop by reporting all production expenses in your tax return's Schedule F (Profit or Loss from Farming) in the year paid.
- Not having to pay Federal, State, and self-employment taxes on the value of the donated crop.
- While there is no charitable deduction for a donated crop (Schedule A – Itemized Deductions) because no income is recognized on the donation, any appreciation of crop-gifted assets happens tax-free within the fund where net proceeds from the crop sale are deposited.

### Some of the benefits to the community are:

- Stimulating Kern's economy by keeping charitable dollars locally. Dollars that would otherwise be sent to Sacramento or Washington D.C. as taxes, remain in Kern.
- Helping to meet Kern County's great needs: poverty, homelessness, hunger, low educational attainment, poor air quality.
- Limiting food waste.

For more information, contact any one of Kern Community Foundation's helpful staff at 661.325.5346 or [info@kernfoundation.org](mailto:info@kernfoundation.org).

# Join us to make our community a better place!

Partnering with Kern Community Foundation is easier than you think. Did you know...

- Individuals, families and even corporations can establish funds.
- Contributions are immediately tax deductible.
- Fund assets are professionally managed, or you can select your own advisor.
- A minimal annual fee supports our work in the community.

To get started, here are a few things to consider...

- What are you passionate about—animals, people, education, health, the environment?
- Do you want to create immediate impact

through an Expendable Fund to help community organizations today, or enduring impact through a Permanently Endowed Fund?

- What type of fund meets your needs? We offer a wide range of options, from flexible Donor Advised Funds to Field of Interest Funds to Scholarship Funds, and more.

- What will you give and when? You can choose to give now by donating cash gifts, crop gifts, stocks and bonds, IRA assets, real estate or partnership interests, or give later by willing a gift to your fund from your estate as part of your legacy. There are great tax advantages to be had both ways.

- What will you name your fund? You can name it after yourself, a special loved one, a cause, or, if you prefer to remain anonymous, you may choose a name that has special meaning for you.



## ... Still need some additional ideas for giving? Consider Kern Community Foundation Endowed Funds

The following causes have individual funds at Kern Community Foundation and may be supported via a direct contribution through the Foundation. While supporting a wide variety of programs and initiatives, most of these funds have a very important thing in common – they have been established as an endowed fund. Endowed funds at Kern Community Foundation support the named cause or program each year by spending only a portion of the fund's annual earnings. The remainder is reinvested back into

the fund. Over time the fund grows while still providing a consistent stream of support to the named cause – forever.

- Peter Anthony Catholic Education Fund
- Arthritis Association of Kern County Fund
- Bakersfield ARC Foundation Endowment Fund
- Bakersfield Christian High School Endowment Fund
- California Living Museum (CALM) Al Robbins Endowment Fund
- The Cat People Endowment Fund
- Karin Enebo Memorial Violin Scholarship Fund
- Heart Never Forgets Endowment Fund
- Kern Futures Scholarships Together Fund
- Kern River Valley Community Fund
- Leaders in Life Endowment Fund
- The Fox Theater Foundation Endowment Fund
- Tom Pryor PTSD Awareness Fund



Bakersfield Christian High School



The Cat People

- Rotary House Retreat Fund
- Eunice Sears Scholarship for Music Fund
- The Women's and Girls' Fund

Interested in supporting one of these worthwhile causes? Simply go to Kern Community Foundation's website at [kernfoundation.org](http://kernfoundation.org) and click on the "Donate Now" button or give us a call at 661.616.2617.



# The Aera Energy Fund



**T**he design and production work of this commemorative edition of our “Community Giving Guide” was funded through a generous donation from Aera Energy LLC, a true partner in Growing Community and Growing Philanthropy.

Since the establishment of The Aera Energy Fund at Kern Community Foundation in 2005, we have had the privilege of managing more than \$3.6 million in community grants for Aera Energy.

The Aera Energy Fund targets nonprofit organizations and educational institutions that have demonstrated success in making a difference in the community. It has funded such diverse projects and programs as capital campaigns, vehicle purchases, nature and wildlife conservation, STEM (science, technology, engineering and math) education, hospital expansions and improvement efforts, sports facilities enhancements, youth camps, cultural events, museum exhibits, monuments and more.

## Some of the agencies and causes that have benefited from The Aera Energy Fund are:

- Bakersfield College Foundation: Aera STEM Success Center
- Bakersfield Memorial Hospital Foundation: Lauren Small Children's Center
- Bakersfield Museum of Art
- Bakersfield Southwest Baseball, Inc.
- Bolsa Chica Conservancy
- Boys & Girls Clubs of Kern County
- Boys & Girls Clubs of Huntington Valley
- California Brain Injury Association
- CASA of Kern County
- Centennial Celebration Committee of Huntington Historical Exhibit
- CSUB Foundation
- Friends of Mercy Foundation: Community Care Clinic
- Golden Empire Gleaners
- Huntington Beach Wetlands Conservancy
- Kern County Museum
- Kern County Museum Foundation's "Aera Gallery"
- Kern Veterans Memorial Foundation
- Montana Tech Foundation Aera Energy Endowment
- Montana Tech Foundation Petroleum Engineering Faculty Endowment
- Museum of Ventura County
- R.M. Pyles Boys Camp
- Ready to Start
- Salinas Valley Heritage Foundation
- Salvation Army Ventura Residences, Inc.
- San Joaquin Community Hospital Foundation: ALS Cancer Center - Aera Patient Exam Room and Grossman Burn Center
- Taft College Foundation: Oilworker Monument Design & Installation
- United Way of Kern County
- Ventura Community Partners Foundation
- Westside Recreation & Park District



United Way of Kern County



CASA of Kern County



Golden Empire Gleaners



# Thank You to Our Donors

Robert C. and Doreen Boylan Abrams Fund  
Aera Energy Fund  
AFG Project Fund  
Dr. Joseph E. Anderson Scholarship Fund  
Peter Anthony Catholic Education Fund  
Arthritis Association of Kern County Fund  
Arvin Union Congregational Church Scholarship Fund  
Arvin Women's Club Scholarship Fund  
Arvin Women's Club - Ellen Kovacevich Scholarship Fund  
Bailey Schweitzer Memorial Scholarship Fund  
Bakersfield Aquatics Center Fund  
Bakersfield ARC Foundation Endowment Fund  
Bakersfield Christian High School Endowment Fund  
Donald E. and Audrey W. Barnes Charitable Fund  
Donald and Earlene Barnes Charitable Fund  
Kristen Barnes Charitable Fund  
Batey Charitable Fund  
Ben and Bryan Batey Charitable Fund  
Jean Baughman Legacy Fund  
Beman Vernon Family Fund of Kern  
Phyllis J. Bivins Memorial Fund  
Boydston Family Charitable Fund  
S & L Boyle Family Fund  
Derek Brown Memorial Scholarship Fund  
California Living Museum (CALM) Al Robbins Endowment Fund  
Larry Carr Memorial Scholarship Fund  
Caratan Family Scholarship Fund  
Cat People Endowment Fund  
CCS Transition Scholarship Fund  
Dolores & Victor Cerro St. Francis Scholarship Fund  
Judith B. Chase Family Fund  
Community Disaster Relief Fund

Community Endowment Fund  
Noel E. Daniells Permanent Endowment Fund  
Curtis & Peggy Darling Funds  
Richard & Lorraine Davies Charitable Fund  
Day of Remembrance Fund  
Dev Charitable Fund  
Coe, Gorman, Diggles Foundation  
Jeff and Denise Dittman Charitable Fund  
Gee Durn Fund  
East Bakersfield High School Class of 1957 - Ron Robison Memorial Scholarship Fund  
ECR Fund  
Karin Enebo Memorial Violin Scholarship Fund  
Shirley Farnsworth Fund  
Claude & Shirley Fiddler Charitable Fund  
Fisherman's Fellowship Charitable Fund  
Foothill Foundation Endowment Fund  
Fox Theater Foundation Endowment Fund  
Give Big Kern Fund  
Golden Empire Gleaners Endowment Fund  
Heart Never Forgets Endowment Fund  
Manuel Gonzales Jr. Memorial Scholarship Fund  
Gordon Charitable Fund  
Ed and Sue Green Family Charitable Fund  
Merle Haggard Musical Scholarship Fund  
Fred and Virginia Hamisch Charitable Fund  
Honor Run Scholarship Fund  
JLB Community Center Fund  
George & Karen Johnson Family Fund  
Juvenile Court Special Needs Fund for Foster Children  
Kayli Memorial Fund  
Duane and Corey Keathley Charitable Fund

Kern 178 Corridor Fund  
Kern Futures Scholarships Now Fund  
Kern Futures Scholarships Together Fund  
Kern High School District Counselors Scholarship Fund  
Kern River Preserve Stewardship Endowment Fund  
Kern River Valley Community Funds  
Kern River Valley Educational and Cultural Foundation Fund  
KRVHF Stewardship Endowment Fund  
Leaders in Life Endowment Fund  
Justin and Carrie Leland Charitable Fund  
Linda Lopez Charitable Fund  
Robert and Judith McCarthy Family Fund  
Garrett and Elizabeth Ming Charitable Fund  
David Moore Agricultural Scholarship Fund  
The David and Jan Nicholas Charitable Fund  
Nickel Family Fund  
Nickel Family Scholarship for Agricultural Education Fund  
North Kern Christian School Endowment Fund  
Nnanedu Odeluga Memorial Fund  
Palitz Family Charitable Fund  
Phillips Family Fund  
Dr. Richard P. Pierucci Scholarship Fund  
Plank Family Charitable Fund  
Tom Pryor PTSD Awareness Fund  
Prolific Talents Fund  
Rotary House Retreat Fund  
Oscar and Libbie Rudnick Scholarship Fund  
Marjorie Rump Charitable Endowment Fund  
Saint Paul's Episcopal Church Endowment Funds  
Sanders Family Fund  
Scoliosis Strong Fund

Eunice Sears Scholarship for Music Fund  
Shafter Historical Society Museum Curator Fund  
Sheldon Family Charitable Fund  
Harriet L. Sheldon Fund  
Sheriff's Employees' Benefit Association Scholarship Fund  
Gayland P. & Joy A. Smith Family Fund  
Spotlight Theater Reserve Fund  
SSRS Stewardship Endowment Fund  
Marvin Steinert Family Charitable Fund  
George and Helen Stewart Memorial Scholarship Fund  
Rod Stiefvater Foundation Fund  
Sandys S. Tang & Mora Tang Fund  
Jack and Mary Lou Thomson Endowment Fund  
C. Jeff & L. Elaine Thomson Commemorative Fund  
Edward M. and Constance W. Tilbury Endowment Fund  
Trang Family Charitable Fund  
Upper Kern Fisheries Enhancement Fund  
Margaret Urner Bakersfield Symphony Orchestra Funds  
Velasco Family Fund  
Eugene J. Voiland Charitable Fund  
Blanche & Irma Weill Foundation Fund  
Tim and Katie Werdel Giving Fund  
West High Foundation Funds  
Westminster Presbyterian Church Foundation Funds  
Diane L. White Charitable Fund  
Stan and Nancy Wilson Benevolence Fund  
Helen Hawk Windes Charitable Fund  
The Women's and Girls' Fund  
Cassandra Wright Charitable Fund  
Bryce & Florence York Fund



Kern Community Foundation Live! is a series of videos highlighting Kern County nonprofits on the Foundation's YouTube Channel.



**KERN COMMUNITY**  
FOUNDATION

Growing community.  
Growing philanthropy.

3300 Truxtun Avenue, Suite 220, Bakersfield, CA 93301

Phone: 661.325.5346 / Fax: 661.325.5358

kernfoundation.org

*Your generosity is critical to our efforts to meet Kern County's many community needs. Contributions made to Kern Community Foundation or its funds are tax deductible as allowed by law.  
(TX ID# 77-0555874)*



Confirmed in Compliance  
with National Standards for  
U.S. Community Foundations

