

2024 COMMUNITY *Giving Guide*



KERN COMMUNITY
FOUNDATION

Growing community.
Growing philanthropy.

The benefits of partnering with

KERN COMMUNITY FOUNDATION

Kern Community Foundation's Nonprofit Strengthening Initiative begins with us holding the nonprofit organizations listed in our *Community Giving Guide* to high standards of transparency and accountability.

This involves:

- Registering with Kern Community Foundation through our online registration and grants platform, and
- Achieving a transparency rating of Silver or higher on Guidestar.org by Candid, the world's largest online database on nonprofits that many potential donors and grantors turn to when considering supporting a 501(c)(3) corporation.

In addition to being listed in the *Community Giving Guide* and its interactive online companion, the Nonprofit Search engine on our website, kernfoundation.org, registered organizations are eligible to apply for Foundation grants and enjoy our wide range of programs and services showcased in the following pages.

Nonprofit Strengthening happens as we empower our partners with the increased Visibility, Capacity and Sustainability that allows them to thrive. This *Guide* includes descriptions of nonprofits serving Kern County, along with their web address, so that potential donors, volunteers and advocates can engage with any one of them.

There are five categories:

- Arts and Culture
- Education and Youth Development
- Environment and Animals
- Health
- Human Services and Community Benefit

Get to know Kern County's diverse nonprofit community and find your passion!

WHAT IS A COMMUNITY FOUNDATION?

Community Foundations help build and strengthen communities and bring together people and organizations that want to make a difference. They are tax-exempt public charities that guide philanthropy and are dedicated to improving the quality of life in the areas they serve.

Introduction

Dear Stakeholders,

I am thrilled to introduce the 2023-2024 Community Giving Guide for the Kern Community Foundation. This year's guide reflects our commitment to modernize our operations to function better in today's digital, post-COVID landscape. We have streamlined our processes, leveraged technology to increase our efficiency, and built partnerships with local nonprofits, donors, and community leaders to create a more vibrant and sustainable Kern County.

At the Kern Community Foundation, we believe that a strong and resilient community is one that invests in its people, particularly those who are most vulnerable. To that end, we have identified three strategic initiatives that guide our work: nonprofit strengthening, educational attainment, and community engagement. These initiatives reflect our core values and vision for a more equitable and inclusive Kern County.

Nonprofit Strengthening We recognize that strong and effective nonprofits are critical to the success of our community. That's why we have launched several initiatives to help local nonprofits develop the skills, tools, and resources they need to thrive. We offer capacity-building workshops, technical assistance, and grants to help nonprofits improve their operations, governance, and sustainability. Our goal is to ensure that nonprofits can continue to serve our community for generations to come.

Educational Attainment Education is the foundation of a thriving community. We believe that every person in Kern County deserves access to high-quality educational opportunities that prepare them for success in life. That's why we have invested in programs that promote educational attainment, particularly among low-income students and first-generation college students. We work with local schools and nonprofits to provide scholarships, mentoring, and other support services that help students achieve their academic and career goals.

Community Engagement We believe that everyone has a role to play in building a stronger and more vibrant Kern County. That's why we have created several opportunities for community members to get involved in philanthropy, volunteerism, and civic engagement. Give Big Kern, our annual 24-hour online giving day, has become a community-wide celebration of giving that has raised millions of dollars from thousands of donors for hundreds of local nonprofits. Our fiscal sponsorship program allows individuals and organizations to develop new nonprofits and charitable activities with the support of the Foundation's administrative infrastructure. And our Bakersfield Youth Jobs Program provides job training and employment opportunities to young people in our community.

As we embark on a new year of community giving, I commend our partners and stakeholders, including nonprofits, donors, local schools, and government officials, for their tireless work and dedication to our community. Your commitment to Kern County is inspiring, and we are honored to work alongside you to create a brighter future for all.

I also express my deep gratitude to the Foundation's staff and Board of Directors for their hard work and leadership during these challenging times. Despite the disruptions caused by the pandemic, we have remained steadfast in our commitment to our mission and vision. We have adapted to new challenges, leveraged technology to increase our impact, and built new partnerships to create a more resilient and equitable Kern County.

As you explore the 2023-2024 Community Giving Guide, you will be inspired by the stories of hope, resilience, and impact that are unfolding every day in our community. I invite you to join us in our work to build a stronger, more vibrant Kern County for generations to come.

Sincerely,



Aaron Falk
Kern Community Foundation
President and CEO

Kern Community Foundation Board of Directors

Aaron Falk	Carlos Sanchez	Glenda Garcia	Vincent Oddo
Tanya Alsheikh	Jeffrey Gutierrez	Joe Gregory	Jay Hershey III
Justin Leland	Kristen Beall Watson	Lydia Chaney	Laura Loller Wolfe



What We Do:

A 501(c)(3) public charity with a powerfully simple mission - Growing Community. Growing Philanthropy. We are known as a home for local philanthropists, a results-oriented grantmaker, and a trusted community leader.

Improving the quality of life in Kern County by increasing charitable giving, educating and connecting donors to community needs they care about, and taking the lead on critical community issues.

Transforming generosity into impact, making Kern County a better place to live, to work, and to visit - bringing together hundreds of donors to grant out millions of dollars to worthy local causes since 1999.

Special Initiatives:

- Women Educate
- Women Empower
- Women Endow
- Women Mentor

Since 2005, **The Women's and Girls' Fund** has transformed the lives of women and girls in Kern County by mobilizing the power and passion of women working together.

The Women's
and Girls' Fund

A Leadership Initiative of
KERN COMMUNITY
FOUNDATION

Through collective giving, The Women's and Girls' Fund endowment has grown to over \$2.3 million. Since its first grantmaking in 2008, The Women's and Girls' Fund has awarded over 50 competitive grants, nearing \$675,000, to nonprofits serving women and girls in Kern County. The WGF committee works by consensus and makes thoughtful decisions that result in grants that focus on root causes and long-term solutions to improve the lives of Kern's women and girls.



Thank you for making a difference

Every day, devoted volunteers in our town give amazing gifts of resources and time to help our neighbors grow stronger.

We offer our gratitude to the generous donors and devoted volunteers across Kern County and the Kern Community Foundation for their unlimited spirit and contribution to building a better community for us all. It's this heartfelt connection that can make a difference in our community and beyond.

Visit us at bankofamerica.com/about.



BAKERSFIELD
YOUTH JOBS PROGRAM



Thanks to a \$5.39 million grant from California Volunteers and the Office of the Governor, a key partnership was formed between Kern Community Foundation and the City of Bakersfield. Kern Community Foundation administers **Bakersfield Youth Jobs Program (BYJP)** which serves to hire approximately 400 youth starting in June 2022 to June 2026, to work in public and nonprofit sectors. The program provides job training, case management, and mentorship to underserved youth to bolster our future workforce. An array of entry-level positions and career paths has been identified in City departments and nonprofit organizations. These pathways provide both hands-on and technical training to equip youth with experience and knowledge to prepare them for future permanent employment.

BYJP offers several paid programs including a high school summer internship program, a college-level fellowship program, internships with the City's Parks Mobile team, and internships with local nonprofits. In addition to providing youth with meaningful, temporary jobs, BYJP offers them with a suite of wrap-around benefits. Interns and Fellows receive professional development workshops which provide opportunities to connect with different City departments and develop hard and soft skills within their careers. The dedicated BYJP staff also provide interns with workshops with topics including resume building, mock job interviews, goal setting, communication skills, and leadership.

To learn more about which opportunities are available please visit:
www.kernfoundation.org/byjp

Donor-Advised Funds

What is a Donor-Advised Fund?

A donor-advised fund is an easy and tax-friendly way to support your favorite nonprofit organizations or areas of interest. You can give assets like money, stocks, or real estate and get a tax deduction immediately. Then, you can help your favorite community projects or nonprofits whenever possible.

Over time, your initial charitable contribution can grow without taxes, and you can give your money to nonprofits, making a real difference whenever you want.

Why Choose a Donor-Advised Fund?

Donor-advised funds have become one of the most popular ways to make the most impact with your charitable money. Picking a donor-advised fund with a community foundation has many advantages. Kern Community Foundation has a deep understanding of the local community and experienced professionals. They make giving easy, offer tax benefits, and allow flexible giving. Plus, you can involve your family and leave a lasting legacy. It also connects you to a network of people and groups working to improve the community, and your fund gets professional investment management.

Here's How:



Put your money or assets into your fund, and you'll get a tax break immediately.



KCF invests your money to make it grow and do more good for the causes you care about.



You can send your money to nonprofits that help the causes you care about.



Establishing Your Legacy

Starting an endowment, or permanent fund, with a planned gift is a smart, flexible, and tax-efficient way to ensure that the causes you care deeply about will continue to benefit from your generosity for a long time.

By making a planned gift to a **legacy fund** or a **Foundation program endowment fund**, you can provide for your loved ones and support the causes and organizations that matter to you. Our philanthropic advisors are experts at helping you figure out the best planned giving strategy to meet your goals. We'll collaborate with you and your professional advisors, such as estate attorneys, CPAs, and wealth advisors, to maximize your tax benefits and your positive impact on the community.

If you are interested in opening a fund, please email us at info@kernfoundation.org or call us at 661-325-5346.



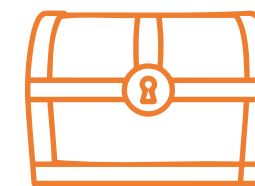
By considering planned gifts, you gain the flexibility to:



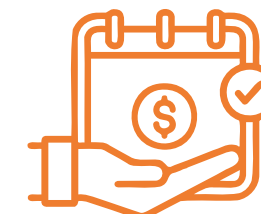
Specify a certain amount or percentage in your will or living trust.



Allocate the remainder of your assets, once you and your heirs have been taken care of, through a charitable remainder trust.



Leave your "residuary" estate - what's left after other bequests have been fulfilled.



Designate your fund as a beneficiary for your IRA.



Dat Krew

Bakersfield Art Association

Opportunity for study & improvement of art technique, encourage art in community, offer art scholarships, & exhibition of member art locally. bakersfieldartassociation.org

Bakersfield Community Theatre

To produce a series of plays annually for the cultural enrichment of the community. bctstage.org

Bakersfield Firefighters Historical Society

To restore, preserve and share the valuable history and timeless artifacts of the Bakersfield Fire Department and create a fire- and emergency-safe community. bfdhistory.com

Bakersfield Master Chorale

To provide a venue in Kern County for the appreciation and awareness of choral music and choral arts education. bakersfieldmasterchorale.org

Bakersfield Museum of Art

To inspire and engage diverse audiences by providing creative visual art experiences through exhibitions, art education, community outreach, and special events. bmoa.org

Bakersfield Symphony Orchestra

To unify and celebrate our diverse community through shared musical experiences. bsonow.org

Creative Crossing Co-Create

To empower artists and communities by equipping artists with the tools necessary to recreate communities through all forms of artistry. creativecrossing.org

Dance Fitness Academy & Healing Arts

To use therapeutic benefits of art for fiscal and mental wellness to create a difference in the community. academyofdfa.com

Dat Krew

To inspire today's youth through art and expression providing a healthy, creative, and social alternative world wide. datkrewacademy.org

Desert Community Orchestra

Presents symphonic concerts and support music education and community activities, including youth performances and college scholarships. desertcommunityorchestra.weebly.com

Empty Space Productions

Providing affordable, professional quality live theatre to Kern County and creating opportunities for artists to study and improve their craft. esonline.org

Friends of the Tehachapi Depot

To educate the public on the history and impact of the railroad in our communities and geographic area. tehachapidepot.com

Historical Society of the Upper Mojave Desert

To collect, preserve, protect artifacts on the cultural history of region, and to educate for public benefit historical material and buildings. hsumd.org

KAXL 88.3 Life FM

Using Christian Music and compelling media in a culturally relevant way to encourage faith and unite our community. kaxl.com

Kern County Museum Foundation

To showcase the history of this remarkable part of California, through Preservation, Education, and Celebration. kerncountymuseum.org

Kern County Scottish Society

To promote and preserve Scottish heritage and culture. kernscot.org

Kern Dance Alliance

Advocacy organization supporting and promoting dance and the arts in Kern County, CA. kerndance.org

Kern River Paiute Council

Preserving, restoring, and teaching Native American culture, history and traditions for educational, ceremonial and social activities. nuuicunni.com

Kern River Valley Art Association

To provide opportunities, resources and exhibition venues for artists with an emphasis on art education and emerging artists. krvaa.org

Kern River Valley Historical Society

To preserve and communicate the history of the Kern River Valley and the surrounding Southern Sierra communities. kernvalleymuseum.org

LQ's Performing Arts Center

To provide the most professional instruction of the Performing Arts while emphasizing the proper technique and creativity to all ages. lqspac.org

Maturango Museum of Indian Wells Valley

To preserve, interpret and develop an appreciation for the natural and cultural history of the Northern Mojave Desert. maturango.org

Petroglyph Educational Foundation, Inc.

To raise public awareness about significance of Native American History, culture and rock art, and importance of protecting these NA contributions. rpfestival.com

Ridge Route Communities Museum & Historical Society

Collecting and preserving the history and artifacts in the mountains south of Bakersfield and north of Castaic. ridgeroutemuseum.org

Ridgecrest Chamber Music Society

To promote education and awareness of genre of chamber music and provide community members access to high quality music. rcchambermusic.org

Shafter Historical Society Inc.

To research and publish local history and to collect and exhibit artifacts relating to the history of Shafter. shafterdepotmuseum.org

The Arts Council of Kern

To provide support, and promote arts access, advocacy, and education for all Kern County residents and visitors. kernarts.org

The Fox Theater Foundation

Enhance the quality of life in Kern County through the effective operation of the Historic Fox Theater as the area's premier cultural center. thebakersfieldfox.com

The Green Hotel Restoration Foundation

To preserve the Hotel and historic oak and provides access to the community. thegreenhotel.org

The Hub of Bakersfield

Committed to redefining + revitalizing Bakersfield, California's urban core. thehubofbakersfield.org

Valley Public Radio

Expanding your world through voices and sounds that inform and inspire. kvpr.org

White Wolf Wellness Foundation

Enhancing community wellness, arts, mindfulness and culture through Okihi, an outdoor riverfront mindful retreat space. whitewolfwellness.org



Valley Public Radio

What Your Help Does

- **Bakersfield Art Association** - \$1,000 will support either a high school or college student pursuing art education or help one or two teachers improve their art programs.
- **Empty Space** - \$100 helps provide free tickets for 10 people for one performance.
- **Historical Society of the Upper Mojave Desert** - \$50 will pay for an educational presentation to elementary school-age children on historical materials.
- **Ken River Valley Historical Society** - \$100 would sponsor an outdoor informational sign for our displays.
- **Ridge Route Communities Museum & Historical Society** - \$300 will cover our public summer patio programs.

EDUCATION & YOUTH DEVELOPMENT



Bakersfield Police Activities League

African American Network of Kern County

Through unity, promote responsible and meaningful programs to educate, create economic parity and job opportunities, and produce positive role models.
aankc.org

African Children's Schools

To build schools for rural children in Africa in areas where there is no public education available.
africanchildrenschools.org

Athletes' Advantage Academy

Dedicated to the radical optimization of human health, physical fitness, and athletic performance.
a3bakersfield.com

Bags4Kids

To provide comfort bags to displaced children.
bags4kids.org

Bakersfield College Foundation

Creating partnerships and building support for the benefit of students, staff, and faculty at Bakersfield College.
supportbc.org

Bakersfield High School Endowment Fund

To support the arts, athletics, activities and clubs at BHS, in pursuit of a full and enriching academic experience for every student.
bakersfield.kernhigh.org

Bakersfield Ivy Legacy Foundation, Inc.

To collaborate with local agencies to secure & manage resources for educational, leadership & philanthropic programs of Alpha Kappa Alpha Sorority Bakersfield.
bakersfielddivlegacy.org

Bakersfield North Rotary Foundation

To act as the charitable arm of Bakersfield North Rotary Club to support charities in the Greater Bakersfield area, particularly those serving children and youth.
bakersfieldnorthrotary.org

Bakersfield Parent Nursery

To encourage and promote education through parent, child and family involvement in our school and community.
bakersfieldparentnursery.com

Bakersfield Police Activities League

To guide at-risk youth through quality educational and athletic after-school programs.
bakersfieldpal.org

Bakersfield Sister City Project Corporation

To promote peace and global awareness through cultural and social interaction with citizens of Bakersfield's Sister Cities around the world.
bakersfieldsistercity.org

Best Buddies

Providing opportunities for friendship, leadership, and employment to people with intellectual and developmental disabilities
bestbuddies.org

Bitwise Impact

To uplift communities by driving innovations in workforce and economic development, creating a more equitable society.
bitwiseindustries.com



Boys & Girls Clubs of Kern County

Boy Scouts of America Southern Sierra Council

To prepare young people to make ethical & moral choices over their lifetime by instilling the values of the Scout Oath & Law.
sscbsa.org

Boys & Girls Clubs of Kern County

To enable all young people, especially those who need us most, to reach their full potential as productive, caring, responsible citizens.
bgclubsofkerncounty.org

Buena Vista Museum of Natural History

To educate, engage, and inspire our community, to explore the wonders of science, through enrichment activities, exhibits and special programs.
buenavistamuseum.org

California State University Bakersfield Auxiliary for Sponsored Programs Administration

Administering externally sponsored programs and research projects on behalf of the University for the charitable and educational benefit of students, faculty, staff, and alumni.
csub.edu/grasp

California State University, Bakersfield Foundation

Advocating for CSUB to government and to the community, and fundraising for CSUB programs and activities.
csub.edu

Centennial High School Athletic Booster Club

A passionate group of parents, community members and fans who want to see CHS's athletics be the best it can be.
facebook.com/redzoneboosterclub

Cerro Coso Community College Foundation

To support access, success, and excellence for students, faculty, and staff at Cerro Coso Community College.
cerrocoso.edu/foundation

Charmed & Chosen

To provide resources, assistance, mentorship, life skills, job/college preparation, financial literacy to individuals and communities in need.
charmedandchosen.org

Child Guidance Guild of Bakersfield, Inc.

To provide resources to help children with emotional and behavioral problems.
bakersfieldguildhouse.org



Boy Scouts of America Southern Sierra Council

Children to Love International

To provide hope for suffering children in the name of Jesus.
childrentolove.org

Christian Youth Film Society, Inc.

To encourage and equip young people to create excellent visual stories of faith.
christianyouthfilmfestival.org

Dreams and Hope for the Children

To empower and encourage our youth to excel beyond one's mind and limitations.
dreamsandhopeforthechildren.org

Driller to Driller Foundation

Rewarding students by providing scholarships to those who are overlooked by traditional programs and are limited by their financial status.
drillertodrillerfoundation.org

Family Life Pregnancy Center

To educate and empower women & men facing pregnancy related decisions.
familylifepc.org

Farmer Veteran Coalition

To mobilize veterans to feed America.
farmvetco.org

First Responders Children's Foundation

To help children of first responders through financial assistance, scholarships, and mental health resources.
1strcf.org

Flight Test Museum Foundation

To support the development of the Air Force Flight Test Museum at Edwards AFB and Blackbird Airpark Annex at USAF Plant 42 in Palmdale.
aftcmuseum.org



Children to Love International

What Your Help Does

- **Bakersfield Ivy Legacy Foundation** - \$100 will provide a single book scholarship for one graduating high school senior, assisting with textbook expenses.
- **Dreams and Hope for the Children** - \$150 will sponsor a child to attend our mindful coping skills workshop. This will include food and workbook. Serving low-income families.
- **Kern Athletic Fencing Foundation** - \$200 provides fencing equipment for one child.
- **League of Dreams** - \$30 will pay for a uniform, pictures and trophy for one athlete.

EDUCATION & YOUTH DEVELOPMENT



Christian Youth Film Society, Inc.

Friends of Kern County Library
To support programs at all Kern County library branches.
kerncountylibrary.org

Get Focused, Stay Focused
To ensure that every student graduates high school with an informed career choice and up-to-date ten-year plan.
getfocusedstayfocused.org

Girl Scouts CCS (Girl Scouts of Central California South)
Girl Scouting builds girls of courage, confidence and character to make the world a better place.
girlscoutscs.org

Golden Empire Youth Tackle Football & Cheer Inc.
To provide a competitive youth tackle football program as well as a Sideline youth cheer program for elementary and junior high school students.
geyf.org

Guardians Around The Earth
Providing STEM edu-care for our youth, caring education and action for our environment and supporting caregivers of community and/or family life.
guardiansaroundtheearth.org

Heritage Oak School
To educate, promote, establish, and equip students in the classical approach to education in light of a Christian world view.
heritageoakschool.info

Inspiring Adolescence, Inc.
Cultivating a dynasty of leaders.

Jim Burke Education Foundation
To provide opportunities for students to excel by enhancing educational and leadership development opportunities through scholarships, grants and match.
jimburkeeducationfoundation.org

KEEP Foundation
To promote and support Camp KEEP through various fundraising efforts.
campkeep.org



Kern County Superintendent of Schools Educational Services Foundation

Kern Athletic Fencing Foundation
Providing children with fencing training as a reward for academic tutoring.
kernaff.org

Kern Bridges Youth Homes
Committed to providing for the physical, emotional, social, and mental health needs of abused and neglected children.
kernbridges.com

Kern Community Tennis Association
Enabling student athletes from low-income families to enjoy the physical, social, and academic benefits of participating in their high school's athletic program by providing them with the necessary equipment and instruction.
kerntennis.org

Kern County 4-H Clubs
Engaging youth in reaching their fullest potential while advancing the field of youth development.
ucanr.edu/sites/4hfoundation

Kern County Historical Society
A countywide membership organization founded in 1931, for persons interested in Kern County history.
kernhistoricalsociety.org

Kern County Sheriff's Mounted Posse
Benefiting physically and mentally challenged children in Kern County.
kcs-mp.com



League of Dreams, Inc.

Kern County Superintendent of Schools Educational Services Foundation
To provide educational services throughout Kern County.
kern.org

Kern County Taxpayers Education Fund
To research, organize and disseminate information and education to the public and business community of Kern County.
kerntaxpayers.org

Kern Economic Development Foundation
Dedicated to connecting education initiatives, community partnerships, and business leaders on projects to develop the local workforce to meet the needs of the local economy.
kedf.org

Kern Literacy Council
Empowering individuals to improve the quality of their lives through literacy education.
kernliteracy.org

Kern Partnership for Children and Families
Seeking to meet needs of low-income and foster children in Kern County.
kernpartnership.com

Kiwanis Club of Rosedale Foundation
To better the lives of the children and families of our community one child and one family at a time.
rosedalekiwanis.org

Latina Leaders of Kern County
To foster leadership, to identify and develop opportunities for Latinas, and to influence key issues affecting our community.
kernlatinas.org

League of Dreams, Inc.
To give every child a chance to play by providing sporting opportunities to children with physical and developmental disabilities.
ourleagueofdreams.com

Lightwave Education
To create tools for individuals to thrive, prosper and succeed through education, mentoring and community outreach.
lightwaveeducation.org

Matrix Entrepreneur Academy
Skills to Last a Lifetime.
matrixentrepreneuracademy.org

Minter Field Air Museum Inc
To educate the public about the important role that Minter Army Air Field played during World War II.
minterfieldairmuseum.com

OTD (Order of the Dragon) Self-Defense Foundation
To offer low-cost self-defense classes to children, with an emphasis on discipline and respect, and to help them become better citizens.
orderofthedragon.com

Parent Institute for Quality Education (PIQE)
To provide families with the knowledge and skills to partner with schools and communities to ensure their children achieve their full potential.
piqe.org

R.M. Pyles Boys Camp
To provide at-risk boys with the opportunity to attend a camp that promotes character development, positive male mentoring and education.
pylescamp.org

Right to Life of Kern County
Informing the public on life-affirming alternatives to abortion by engaging in public education, campus outreach, and grassroots lobbying efforts.
rtlkc.org

Safe Haven Kids League of California City
To provide after-school programs for Greater California City area.
safehavenkidsleague.org

Shamrock Community Foundation
Providing access to higher education through college planning services and by promoting literacy, family connectedness, and health and wellness.
shamrockplanning.org/communityfoundation

South Kern Sol
Elevating youth's voice for health and racial equity through Kern County's nonprofit, non-partisan youth-led newsroom.
southkernsol.org

Southwest Community Nursery School
Parent co-operative that emphasizes the learn through play experience.
facebook.com/southwestcns

STARBASE Edwards
Raising public awareness of the need for scientific and engineering literacy and exemplary teaching practices in STEM education.
starbase-edwards.org



Kern Community Tennis Association



STARBASE Edwards

Untamed Kingdom Learning Center
Committed to ending the plague of lack of education and homelessness that is often caused by income, unemployment, drug abuse and homelessness.
untamedkingdom.com

Upside Academy, Inc.
To provide volunteer and community service opportunities for youth ages 12 through 18 in Kern County.
upsideacademyinc.org

Valley PBS
Enriches, educates, and strengthens our diverse Valley community through the power of public service media.
valleypbs.org



STEMTaught Foundation

Villagers, Inc.
Providing a safe haven where inner-city youth are empowered to exercise leadership skills in their communities, and succeed in their personal lives.
facebook.com/villagersinc

Walk 2 Freedom Inc
Build healthy relationships and overcome resistance through spiritual counseling and deliverance.
walk2freedom.org

Watch Them Rise
Empowering at-risk girls to be leaders in their communities by teaching them skills through our rescue horse program.
watchthemrise.org

STEMTaught Foundation
To create a more vibrant, innovative future for our youth by providing schools with STEM supplies, curriculum, training and support.
stemtaughtfoundation.org

Taft College Foundation
Dedicated to supporting student success through fund raising and development of community relationships.
taftcollege.edu/foundation

Teach Me Technology
To build a future pipeline of skilled technology workers.
teachmetechnology.org

The Contreras Foundation
To promote family unity through fundraising events for Kern County education and community benefit.
thecontrerasfoundation.com

There Is Hope For Me, Inc.
To provide virtual healing, purpose and empowerment to survivors of human trafficking.
thereishopeforme.org

Transitional Youth Mobilizing for Change (TYM4Change)
To empower youth to realize their potential and become assets to their community through learning, research, and action.
tym4change.org

United Resources for Social Change, Inc.
Providing the student community with opportunities for achievement, enrichment, and service, in preparation for personal and academic success.
supportstudentsuccess.org

Westchester Kiwanis Foundation
Providing services to benefit underprivileged children and veterans in Kern County.
westchesterkiwanis.org

Word for Word Ministries, Inc.
Helping students memorize the Bible "in context," with the LISTEN-SING-READ-WRITE-RECITE method for private and home schools.
biblesong.com

Youth 2 Leaders Education Foundation
To unlock the power of higher education.
y2lef.org

Youth Connection, Inc.
Redirection by Connection.
youthconnectionkern.org

Youth for Christ of Kern County
Meeting the needs of young people physically, mentally, socially, and spiritually throughout Kern County.
yfckern.org

Reagan Lee Shibata



Reagan Lee Shibata was born in Ridgecrest, California and now lives in the Kern River Valley. She received the Kern River Valley Community Fund Scholarship. Reagan enjoys sports, playing guitar, listening to music, painting, and spending time with her family. She graduated from Kern River Valley High in 2022 and is currently studying radiological technology at Bakersfield College. Reagan completed the year-long City Hall Fellowship Program with the Bakersfield Youth Jobs Program. She is passionate about helping others and making the world a better place. In high school, she played basketball and softball and was part of the Future Farmers of America.

Reagan is grateful for the opportunities provided by Kern Community Foundation. She said, "This scholarship was the best one I received. Without it, I couldn't continue my education because of the cost." Reagan appreciates that Kern Community Foundation didn't just give her the money and leave her to figure things out on her own; they guided her throughout the process.

Apryl Tovar



Apryl Tovar is a first-generation college student who loves dogs and calls Bakersfield her hometown. She was awarded the Kern Futures Renewable Scholarship, which has helped her pursue her dreams. Currently, Apryl is working towards her master's degree in public administration at CSUB. Her goal is to make a positive impact on students in her community and other communities like hers, and to break the cycle of generational challenges. Apryl completed the year-long City Hall Fellowship Program, which is a part of the Bakersfield Youth Jobs Program.

Apryl graduated from Arvin High School, where she actively participated in the Associated Student Body and Spanish Club. She earned a full-ride scholarship to Union College, a private liberal arts college in New York. At Union College, Apryl excelled in her studies and earned a double major in psychology and anthropology with honors.

Apryl's journey is an inspiration to all. She demonstrates the power of education and the value of embracing new opportunities. With her dedication and passion for making a difference, Apryl is determined to create a better future for herself and her community.



Student Leader Program

Kern Community Foundation is proud to partner with the **Bank of America** through their **Student Leader program**, a vital initiative that has been part of our commitment to youth employment and economic mobility. Nationwide, this program extends its impact, providing over 3,400 teens and young adults with summer job opportunities across 91 nonprofits.

The program equips diverse, community-minded young students with the skills and experiences needed to thrive in the workforce. Through leadership training and an eight-week paid summer internship with local nonprofits, Bank of America Student Leaders gain invaluable hands-on experience. In Kern County alone, over 50 students are connected to opportunities with organizations such as the Boys and Girls Clubs of Kern County, Garden Pathways, Kern Economic Development Corp., and Taft College.



ENVIRONMENT & ANIMALS



Critters Without Litters

Almost Eden Rescue

Saving at-risk domestic animals and promoting spay/neuter, shots, and microchipping.

almostedenrescue.com

Bakersfield Pet Food Pantry

Helping our community by providing temporary assistance of emergency pet food to families suffering financial hardships, low income seniors, disabled persons, and homeless individuals.

bakersfieldpetfoodpantry.org



Redemption Ranch

Bakersfield SPCA

Kern County's Only No-Kill Shelter provides homeless animals with a safe haven until they can be rehomed.

bakersfieldspca.org

Buster's Pet Fund

Providing medical attention and rescue to sick and injured Kern County animals, especially those in rural communities.

busterslegacy.org

California Breakfast Burritos

To foster the sport of pack burro racing; to train, care for, and adopt burros; and to educate the public in the same.

calibreakfastburros.wixsite.com/calibreakfastburros

California City Animal Outreach Foundation

Supporting the California City Animal Shelter and our local pet community.

calcityaof.wixsite.com/ccaf

California Living Museum Foundation (CALM)

Supporting the California Living Museum, Kern County's native zoo and gardens.

calmzoo.org

California Trout

Ensuring healthy waters and resilient wild fish for a better California.

caltrout.org

Consulting and Rescuing Equine (CARE), LLC

To provide a safe haven for equine and companion animals, and to help owners keep their animals for life by providing financial assistance.

consultingandrescuingequine.com

Critters Without Litters

Helping pets and pet owners with low-cost spay/neuter services.

critterswithoutlitters.org

Equine Rescue Outakontrol

Rescuing abandon, abused, slaughter bound horses, we provide life saving medical care and rehabilitation for adoption.

outakontrol.org

Fur Friends 4 Life

To help as many dogs as possible, educate the public on the importance of spay/neuter, and to one day have fewer dogs roaming our streets.

furfriends4life.org

H.A.L.T. (Helping Animals Live Tomorrow Rescue)

Rescuing homeless dogs and cats and finding them the loving homes they deserve.

haltrescue.org

Have A Heart Humane Society

Providing rescue and low-cost vaccination and spay/neuter because cats and dogs enrich and heal our lives and deserve a caring home.

haveahearthumanesociety.org

Keep California Beautiful

Dedicated to alternative waste management, beautification, community networking and outreach.

keepcabeautiful.org

Keepers of the Kern

Restoring, protecting, and preserving the quality and uniqueness of the Wild and Scenic Kern River.

keepersofthekern.org

Kern Audubon Society

To educate all age groups about the importance of birds and wildlife through outreach, field trips and citizen science.

kernaudubonsociety.org



Tejon Ranch Conservancy

Kern River Conservancy

Implementing our education initiatives focused on watershed conservation, responsible public land use, native trout preservation and community outreach.

kernriverconservancy.org

Lifesavers, Inc.

Saving wild and domestic horses from abuse, neglect and slaughter, and providing healing programs to the public.

wildhorserescue.org

Marigold Farms Inc

To contribute regeneratively grown produce, herbal remedies, and seedlings to the local community.

marigoldfarms.wixsite.com/pinehomestead

Marley's Mutts Dog Rescue

To rescue, rehabilitate and rehome discarded/abused & forgotten animals.

marleysmutts.org

Pacific Waterfowl Rescue

To rescue, rehabilitate, and rehome domestic ducks & geese. We also provide education to discourage "dumping" of ducks and geese in public areas.

pacificwaterfowlrescue.org

Plumas Corporation

Fostering good land stewardship through education and restoration activities resulting in healthy forests, resilient watersheds and prosperous communities.

plumascorp.org

Project Clean Air

Striving to enhance the community by improving air quality through education and collective action.

projectcleanair.us

Quail Springs Permaculture

Empowering students of all ages and backgrounds with knowledge, skills and inspiration essential to cultivating ecological and social health.

quailsprings.org

Redemption Ranch

Rescuing animals to rescue people in need of redemption.

redemptionranchca.org

Sand Creek Rescue, Inc

Primarily rescuing and giving hope to horses that are the most difficult to place: pregnant mares, mares with foals and stallions.

sandcreekrescue.org

Sequoia ForestKeeper

To protect and restore the ecosystems of the southern Sierra Nevada - including both the Sequoia National Forest and the Giant Sequoia.

sequoiaforestkeeper.org

Sequoia Riverlands Trust

To inspire love and lasting protection for important lands.

sequoiariverlands.org

Southern Sierra Research Station

To promote, facilitate, and disseminate biological research that informs conservation decisions and environmental policy.

southernsierraresearch.org

Spay Neuter Imperative Project California (SNIP Bus)

Low-cost mobile spay & neuter clinic for poor pet owners in low-income zip codes. Our mission is to end the killing in animal shelters.

snipbus.org

Strength of Shadow Dog Rescue, Inc.

To rescue dogs and save people at the same time.

strengthofshadow.org

Tejon Ranch Conservancy

To preserve, enhance, and restore the native biodiversity and ecosystem values of the Tejon Ranch and the Tehachapi Range for the benefit future generations.

tejonconservancy.org

The Cat People

To end the needless suffering of felines in Kern County through rescue, rehabilitation, adoption, community education, and low-income assistance programs.

thecatpeople.org

The Earth Organization

To resolve clean water supply issues, regenerate land, and bring about a healthier world for all.

theearthorganization.org

The Wildlands Conservancy's Wind Wolves Preserve

To preserve the beauty and biodiversity of the earth and to provide programs so that children may know the wonder and joy of nature.

wildlandsconservancy.org

Tree Foundation of Kern

To help improve our air quality, beautify our local landscape, promote physical and mental health through trees as well as educate our citizens about trees, their benefits and care.

treefoundationofkern.org

Trout Unlimited

To conserve, protect and restore North America's coldwater fisheries and their watersheds.

tu.org

Western Rivers Conservancy

Conserving land along rivers to protect habitat for fish and wildlife, sources of cold water and provide public access.

westernrivers.org

Whiskers, Paws, Hooves and Claws Animals Advocacy

Dedicated to horse rescue and rehabilitation, specializing in livestock and equine fostering, emergency response, and community service.

hooves-paws.org



The Wildlands Conservancy's Wind Wolves Preserve

What Your Help Does

- **California Breakfast Burritos** - \$25 pays towards fuel to haul burros to visit an assisted living facility.
- **CALM** - \$300 will help care for one animal in CALM's wildlife Rehabilitation Center for one week.
- **Kern River Conservancy** - \$100 pays for trash and portable toilet amenities in campsites along the Wild and Scenic Kern River to help ensure clean water quality for native trout and wildlife sustainability.
- **Redemption Ranch** - \$50 helps provide treats and toys for our pups.
- **Tejon Ranch Conservancy** - \$500 will help sponsor community hikes and naturalist-led guided exploration for underserved youth at Tejon Ranch.



Empowering Kern County: Give Big Kern Makes a Difference

- Kern Community Foundation (KCF) is a nonprofit organization with a powerful mission: Growing Community. Growing Philanthropy. Our goal is to help make Kern County a better place to live, work, and visit by being a resource for local nonprofit organizations, donors, and businesses who want to do good.
- KCF's premier event is **Give Big Kern**. It happens every year on the first Tuesday of May and helps local nonprofit organizations raise money and volunteer hours. Since 2016, Give Big Kern has raised millions of dollars from thousands of donors for hundreds of local nonprofits.



Giving to nonprofits throughout Kern County

Give Big at the Park

The inaugural Give Big at the Park showcased over 60 nonprofits, informing the public about their mission.



- Give Big Kern gives people in Kern County a chance to support local organizations that make our region better. You can help by donating money online - every dollar makes a big difference - or by offering your time as a volunteer. Since 2016, Give Big Kern has raised over millions of dollars from thousands of donors for hundreds of local nonprofits and gathered thousands of pledge volunteer hours from people in our community. The money raised goes directly to the participating nonprofits to support their important work. To empower nonprofits, Give Big Kern offers workshops, marketing materials, incentive prizes, and free events for nonprofit organizations to help them succeed. All of this is possible because of the generous support from sponsors.

GBK Watch Party

The annual Give Big Kern Watch Party at Temblor Brewing Company celebrates the hardworking nonprofits on Giving Day.



- Give Big Kern has been recognized for its outstanding contributions. It has won the Greater Bakersfield Chamber of Commerce's Beautiful Bakersfield Awards in 2019, 2020, and 2022. This award shows how Give Big Kern improves our community. In 2023, Give Big Kern has achieved its most successful year yet, raising a record-breaking \$965,893 for local nonprofits. 3,156 generous donors, benefiting 137 local nonprofits, supported Give Big Kern. The collaboration between Kern Community Foundation and community-based organizations helps these nonprofits get the resources they need to grow and make a lasting impact.
- Remember, every donation makes a big difference in the lives of Kern County residents. By supporting Give Big Kern, you actively contribute to making our community stronger. To learn more or get involved, visit givebigkern.org. Together, we make a lasting impact and empower Kern County, one act of giving at a time.

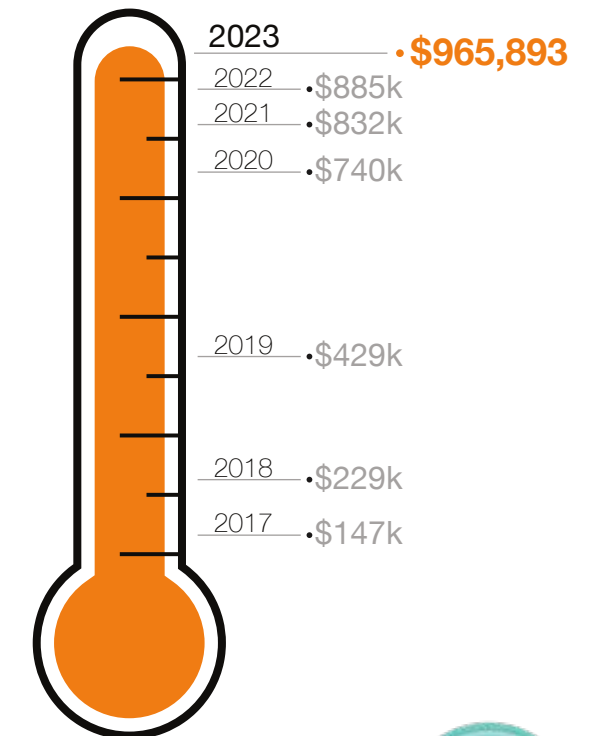


GBK Press Conference held at the Padre Hotel announces the creation of Giving Day.



To kickstart Giving Day, nonprofits gathered in Downtown Bakersfield to ring the historical Liberty Bell.

GBK Amount Raised Per Year





Alzheimer's Disease Association of Kern County, Inc. (ADAKC)

Advanced Center for Eyecare
To offer high-quality eye care services to the uninsured, underinsured, and underserved local population.
acecares.org

Adventist Health Bakersfield
Living God's love by inspiring health, wholeness and hope.
adventisthealth.org/bakersfield

Adventist Health Tehachapi Valley
Living God's love by inspiring health, wholeness and hope.
adventisthealth.org/tehachapi-valley

ALS Association Golden West Chapter
To discover treatments and cures for ALS, and to serve, advocate for, and empower people affected by ALS to live their lives to the fullest.
alsagoldenwest.org

Alzheimer's Association
To eliminate Alzheimer's through research; provide support for all affected; and to reduce dementia through brain health.
alz.org/socal

Alzheimer's Disease Association of Kern County, Inc. (ADAKC)
To improve the lives of those in Kern County affected by Alzheimer's disease and related disorders.
adakc.org

American Cancer Society
Voluntary health organization dedicated to eliminating cancer as a major health problem through research, education, advocacy & service.
cancer.org

American Heart Association
To build healthier lives free of cardiovascular disease and stroke.
heart.org

Apple Core Project Inc
To fight hunger locally by using sustainable practices through hands on gardening, nutrition, and food bank partnerships.
applecoreprojectinc.com

Baby Café Bakersfield
Providing access to breastfeeding care and education for families in Kern County.
babycafebakersfield.org

Bakersfield Memorial Hospital Foundation
Contributing to the quality of life in our community by funding healthcare technology and services at Bakersfield Memorial Hospital.
supportbakersfield.org

Bakersfield Pregnancy Center
Empowering individuals to make healthy, life affirming choices regarding pregnancy and sexual health.
bpcpartners.org

Bike Bakersfield
To promote bicycling as a safe, fun and environmentally friendly means of everyday transportation.
bikebakersfield.org

Black Infant Maternal Health Initiative
Striving for birth equity through unity and empowerment
kernbimhi.com



Bakersfield Pregnancy Center



Bristol Hospice Foundation of California

Bristol Hospice Foundation of California (Formerly Optimal Hospice Foundation)
To fund hospice care services for the uninsured and support bereaved families with programs like Kids Camp.
bristolhospicefoundationca.org

CSF Medical Nonprofit Foundation
To provide medical access to preventative health screenings to underinsured and uninsured individuals in Kern County.
csffoundation.org

Foundation ThinkAgain
To significantly increase the functionality and improve the futures of pediatric cancer and brain tumor survivors by providing needed rehabilitation therapies.
thinkagain.org

Global Family Care Network
To protect and restore young at risk girls through girls' empowerment clubs and a homeless/runaway youth shelter.
globalfamily.care

Hina Patel Foundation
To increase Sickle Cell Awareness and provide education and services to enhance well being of affected people and their families.
hinapatelfoundation.org

Hoffmann Hospice
To celebrate the sanctity of life, provide compassionate end-of-life care and comfort the grieving.
hoffmannhospice.org

Houchin Community Blood Bank
Kern County needs blood, platelets, and plasma so no one fears losing their life over a shortage.
hccb.com

JDRF Los Angeles Chapter (also serving Kern County)
Funding Type 1 Diabetes research, and improving lives by accelerating life-changing breakthroughs to cure, prevent and treat T1D and its complications.
jdrf.org

Kern County Cancer Foundation
Assisting Kern County residents who need financial assistance in obtaining treatment for cancer and associated diseases.
kerncountycancerfoundation.org

Kern Down Syndrome Network
Improving the quality of life and education for people with Down syndrome.
kerndsn.org

Kern Valley Hospital Foundation
To provide support to the Kern Valley Hospital by funding educational programs and services that will have a positive impact on patients, employees and the Kern Valley Community.
kvhd.org/foundation

Learning Dynamics, Inc.
To make psychological and educational support affordable and attainable for all ages.
learningdynamicsinc.org

Leukemia & Lymphoma Society - Central California
To cure leukemia, lymphoma, Hodgkin's disease and myeloma, and improve the quality of life of patients and their families.
lls.org/cca

Links for Life
To provide service to women and families affected by breast cancer. Fund diagnostic services for the detection of breast cancer.
linksforlife.org

National Multiple Sclerosis Society, Southern California & Nevada Chapter
People affected by MS can live their best lives as we stop MS, restore function and end MS forever.
nationalmssociety.org/chapters/cal

Nurse-Family Partnership
Empowering first-time mothers living in poverty to successfully change their lives and the lives of their children.
nursefamilypartnership.org



Links for Life

What Your Help Does

- **Advanced Center for Eyecare** - \$325 provides a child or adult in need with one comprehensive eye exam by a licensed optometrist and one free pair of glasses, including frames and lenses.
- **Global Family Network** - \$200 will provide 1 kit for our girls' empowerment clubs here in Kern County including crafts, games, journals and snacks.
- **Kern County Cancer Foundation** - \$250 provides one round trip in our shuttle for a child with cancer to their treatment in Madera or Los Angeles.
- **Links for Life** - \$100 will pay for one breast ultrasound.
- **Public Safety Professionals Retreat (PSPR)** - \$1,500 will cover the cost of supplies for a full retreat

Pacific Healthcare Services

To empower individuals, communities, and organizations to achieve an optimal state of brain-body wellness.
pacifichhealth.org

Partners in Care Foundation

Shaping healthcare by partnering with organizations and families in the work of changing lives, communities, and healthcare system.
picf.org

Pregnancy Resource Center of the Kern River Valley

Encouraging women to make life-giving choices by offering material assistance, spiritual care and peer counseling.
prckrv.wixsite.com/wearehere

Public Safety Professionals Retreat (ProSPeR)

To assist First Responders with stress-related symptoms due to critical incidents -- to save careers, restore marriages, and prevent suicides.
prosperetreat.com

Rising Star Riders

Serving the needs of children and adults with physical or emotional challenges.
rsriders.org

Shielding the Frontline, Kern County, Inc.

Shielding and empowering our Kern County frontline emergency responders so they can thrive, reconnect and serve.
shieldingthefrontline.org

Tigerfight Foundation

To provide financial assistance to Kern County families who are currently being treated for any form of pediatric blood cancer.
tigerfight.org

Valley Caregiver Resource Center

To provide a comprehensive array of services to assist families with the challenges of the aging process.
valleycrc.org

Valley Children's Health Care Foundation

To generate funds to support the goals of Valley Children's Healthcare and its affiliated entities.
valleychildrens.org/foundation

Valley Fever Americas Foundation

Funding of a vaccine and a cure for Valley Fever as well as public awareness.
valleyfever.com



National Multiple Sclerosis Society, Southern California & Nevada Chapter

Growing Resiliency Through Endowment

An **endowed fund** is held in perpetuity to support community needs. At Kern Community Foundation, we like to think of endowed funds as “for good, forever.” The principal of an endowed fund is invested, not granted out. A portion of annual investment earnings, on the other hand, may be invested in the community as scholarships to students or grants to nonprofit organizations. Nonprofit or agency endowments may be used towards the organization’s administrative or programmatic needs. Any earnings that remain are reinvested back into the fund. Over time, the principal of an endowed fund grows, and as it does, annual earnings grow as well, providing a consistent stream of support to the fund’s intended cause or causes—forever. Some of the endowed funds at Kern Community Foundation are below.

Organizations with an asterisk have been set up in support of a specific organization and are considered **Agency Endowed Funds**. These local charities or causes understand the power of growing resiliency through endowment. Endowed funds are like insurance for a rainy day—or for seizing upon opportunities. They can provide funds when you need them most and are always an asset—never a liability.

- Arthritis Association of Kern County Fund
- Bakersfield ARC Foundation Endowment Fund*
- Bakersfield High School Endowment Fund*
- Bakersfield Museum of Art Fund*
- Bakersfield Pregnancy Center Stewardship Fund*
- Buena Vista Museum of Natural History & Science Fund*
- California Living Museum (CALM) Al Robbins Endowment Fund*
- Heart Never Forgets Endowment Fund*
- Kern River Preserve Stewardship Endowment Fund
- Leaders in Life Endowment Fund*
- Links for Life Legacy Endowment Fund*
- Peter Anthony Catholic Education Fund
- Shafter Historical - Ohanneson Fund*
- SSRS Stewardship Endowment Fund*
- The Cat People Endowment Fund*
- The Fox Theater Foundation Endowment Fund*
- The Golden Empire Gleaners Endowment Fund*
- The Women's and Girls' Fund at Kern Community Foundation
- West High School Alumni Association Endowment Fund
- Westminster Presbyterian Church Foundation Endowment Fund*
- Westminster Presbyterian Church Foundation - Global Gifts End*
- Youth 2 Leaders Education Fund*

It is easy to establish an endowed fund at Kern Community Foundation.

We offer a number of options to fit each donor’s—or nonprofit’s—philanthropic mission. To learn more about other ways to establish an endowed fund, contact us at info@kernfoundation.org or **661-325-5346**. Not ready to establish an endowed fund at this time? It is also easy to support any one of the endowed funds listed above. Simply go to our website, kernfoundation.org, click on the “Donate Now” button and choose the fund you wish to support. You can also make a donation over the phone using a major credit card. Just call us.



Kern Connected Community Network

The **Kern Connected Community Network (KCCN)** was established in 2020 as a local initiative aimed at addressing the social determinants of health and connecting individuals to community resources. Research has shown that 40 percent of a person’s health outcomes are influenced by social and economic factors. By tackling these social needs, KCCN provides holistic care and supports individuals in achieving their best health and wellness. Since its inception, KCCN has successfully served over 3,000 clients and partnered with more than 140 organizations.

KCCN is built upon a collaborative network of community partners who exchange electronic referrals and monitor outcomes for vulnerable populations. A key component of this network is the technology platform Unite Us which simplifies the process of referring individuals to social services. It electronically connects an individual’s entire “care team,” enabling coordinated care and relieving clients from the burden of navigating these crucial services on their own.

Kern Community Foundation serves as the convener and fiscal agent for the Kern CCN. We bring together a diverse group of community-based organizations and agencies, fostering collaboration within the network. As we move forward, the Kern CCN aims to establish a more unified support system for Kern County. By equipping our community partners with the necessary tools, we can enhance their efficiency and effectiveness. Furthermore, the data generated through this network will contribute to improving community health outcomes.

Are you involved in supporting vulnerable populations? Would you like to be part of the Kern Connected Community Network and ensure seamless client referrals? We invite you to connect with us by reaching out to info@kernfoundation.org. Together, we can make a positive impact on the lives of individuals in our community.

HUMAN SERVICES & COMMUNITY BENEFIT



American Red Cross - Kern Chapter

3C Capital Fund Inc.
Providing alternative access to business assistance, business resources and business funding sources for underserved populations
3ccf.org

A Dream Shared
To provide a place for people with disabilities a chance to learn, grow, and excel in life.
adreamshared.org

A Helping Hand (AHH)
Helping people to help themselves.
ahelpinghand.org

ACLU Foundation of Southern California
Defending the fundamental rights outlined in the United States Constitution and the Bill of Rights.
aclusocal.org

Alliance Against Family Violence and Sexual Assault
To stop domestic violence, sexual assault and human trafficking in Kern County and assist survivors in reclaiming their lives.
kernalliance.org

American Red Cross – Kern Chapter
To prevent and alleviate human suffering in the face of emergencies by mobilizing the power of volunteers and the generosity of donors.
redcross.org/kernchapter

Aqua-Nut Divers
To provide a transformative experience for disabled military veterans through scuba at no cost to them, providing a healthy outlet.
aquanutdivers.com

Arms of Hope
To combat homelessness and substance abuse and assist people to achieve wholeness and be overcomers.
facebook.com/profile.php?id=100068307716938

Arranque Empresarial
Centered on community unity, increasing prosperity, and enhancing quality of life standards for Kern's Spanish-speaking community.
arranqueempresarial.org

ASL Junction
Striving to expand a community of signers, and empower all to communicate without limits.
asljunction.org

Aspiranet
Envisioning a world in which all children and youth are loved and cared for, and all families have the resources to thrive.
aspiranet.org

Assistance League of Bakersfield
Transforming the lives of children and adults through community programs.
bakersfield.assistanceleague.org

Bags of Love Foundation
To provide hope to children affected by cancer, and their families.
bagsoflovefoundation.com

Bakersfield Angels
Wrapping community around children and families in the foster care system through intentional giving, relationship building, and mentorship.
bakersfieldangels.org

Bakersfield ARC
To build a stronger community by helping people with Intellectual and Developmental Disabilities achieve individual goals for a better life.
barc-inc.org

Bakersfield Black Dollar Initiative
To promote Awareness of Small Black owned businesses.
bakersfieldblackdollarinitiative.com

Bakersfield Boxers & Bullies Rescue
Dedicated to Boxer and Pit bull breeds in Bakersfield, CA. Our main focus is education and helping people KEEP their dogs.
facebook.com/bakersfieldboxersnbulliesrescue

Bakersfield Center for Pastoral Counseling (FACE-USA)
Providing pastoral, professional, and peer counseling for Kern residents in need.
freeanglican.org

Bakersfield East Rotary Foundation
To provide grants, scholarships and allocations for community, national and international projects.
bakersfieldeastrotary.org

Bakersfield Foundation
Serving as an avenue for the public to donate to projects and beautification efforts which benefit the community.
bakersfieldcity.us

Bakersfield Recovery Services
Existing to serve people struggling with substance abuse. We strive to improve our community one life at a time by restoring hope to the hopeless.
bakersfieldrecoveryservices.com

Bakersfield Ronald McDonald House
To provide comfort, care and support to children and families in Southern California.
rmhsc.org/bakersfield

Bakersfield Senior Center, Inc.
To provide access to better healthcare, human services and prevention through socialization and education.
bakersfieldseniorcenter.org

Bakersfield VA National Cemetery Support Committee
Enhancing the esthetics and promoting the final resting place for our nation's heroes at Bakersfield National Cemetery.
bakersfieldnationalcemeterysup.com

Bakersfield-Kern Regional Homeless Collaborative
To put an end to homelessness in Kern County through collaborative planning and action.
bkrhc.org



Defy Ventures

Be Finally Free
Focusing on the whole-person through an interactive approach that allows each participant to uncover his/her challenges and resolve them through personal and restorative change.
befinallyfree.org

Be the Village
Providing services and resources to current foster youth and young adults to help them achieve their goals and network within the community.
bethenvillagekern.com

Bethesda Lutheran Communities
Enhancing the lives of people with intellectual and developmental disabilities through services that share the good news of Jesus Christ.
bethesdalcal.org

Brenda Jean's Sober Living Facility
Residents will achieve self-sufficiency with structured support by helping in Brenda Jean's food pantry, soup kitchen, and/or internship programs.
brendajeans.org

California Commission On Sexual Exploitation
To reduce criminal behavior by the application of evidence-based and trauma-informed services.
calcose.com

California Family Counseling Network, Inc.
To sponsor special events for charitable purposes for the psychological and mental health care of families, especially those that are underserved.
cfcninc.org

California Rural Legal Assistance, Inc.
To fight for justice and individual rights alongside the most exploited communities of our society.
crla.org

CASA (Court Appointed Special Advocates) of Kern County
To speak on behalf of abused and neglected children in the foster care process, through the use of highly trained volunteers.
kerncasa.org

Casa Esperanza Transitional Home for Women
Innovative & holistic in approach, Casa Esperanza is a home for homeless women/children transitioning to independence.
facebook.com/casaesperanzabakersfield



Community Action Partnership of Kern Foundation

What Your Help Does

- **California Breakfast Burritos** - \$50 assist in doing character building activities with clients.
- **Dolores Huerta Foundation** - \$125 pays for one youth to attend a educational and leadership conference.
- **Independence Through GRACE Foundation** - \$200 enables our participants to learn social skills through dance class for a month.
- **Mountain Communities Family Resource Center, Inc.** - \$100 will fill our food pantry with over 1000 lbs. of food to serve our families with children and senior citizens.
- **No Sister Left Behind** - \$300 can help to impact the health and well-being of Black women through programs, research, resources, and ongoing outreach efforts.

HUMAN SERVICES & COMMUNITY BENEFIT



Garden Pathways, Inc.

Catholic Charities of Bakersfield

Respecting the presence of God among us, we serve, advocate for and empower those in need.
ccdof.org

CityServe Network

Confronting the most entrenched needs of our communities through the local church, local businesses and local governments.
cityservenetwork.com

Community Action Partnership of Kern

To address underlying causes of poverty, alleviates the effects, and promotes dignity and self-sufficiency in the communities we serve.
capk.org

Community Action Partnership of Kern Foundation

To address the immediate funding needs of CAPK programs that serve people who are facing poverty and economic disadvantage.
capkfoundation.org

Comrades and Canopies

Reinvigorating the lives of local veterans through the adrenaline and excitement of skydiving.
facebook.com/comradesNcanopies

Condor Community Foundation

Striving to enhance the health, education, and general well being of the residents of Kern County. Region Served*
bakersfieldcondors.com/condorstown

Cornerstone Center for Counseling and Discipleship

Offering hope and healing to our community.
cornerstoneccd.com

Covenant Community Services

Providing hope and love to restore lives and transform generations.
covenantcs.net

Defy Ventures

To give people with criminal histories their best shot at a second chance.
defyventures.org

Desert Area Resources and Training

To provide service to people who have disabilities or other special needs, so they can pursue their dreams.
dartontarget.org

Dolores Huerta Foundation

To inspire and organize communities to build volunteer organizations empowered to pursue social justice.
doloreshuerta.org

Dress for Success Bakersfield

To educate women about the soft skills needed to achieve economic independence by providing professional tools to help women thrive in work and life.
bakersfield.dressforsuccess.org

Emmanuel Lutheran Church

To faithfully serve the community, spreading love, healing, and justice.
emmanuelbakersfield.org

empOWERment Dess Perkins Foundation

To restore the hope to the hopeless, disenfranchised, at-risk, and victims turned survivors of human and sex trafficking.
empowermentdp.org

Exceptional Family Center

To celebrate the success of individuals with I/DD and their families achieved through collaboration, education, empowerment and mutual support.
kernefc.org

Faith in the Valley - Kern

To build power with our brothers and sisters to bring about justice and eliminate suffering.
faithinthevalley.org

Farmworker Institute of Education and Leadership Development (FIELD)

To empower the underserved to be self-sufficient.
farmworkerinstitute.org

Flood Bakersfield Ministries

To help people overcome their disadvantaged circumstance through the love of God.
floodbako.com

Garden Pathways, Inc.

To transform lives from the inside out through loving, mentoring relationships.
gardenpathways.org

Golden Empire Affordable Housing, Inc.

Expanding Affordable Housing in Kern County.
geahi.org

Golden Empire Gleaners

To help alleviate hunger and provide food for needy persons of all ages.
goldenempiregleaners.com

Goodwill Industries of South Central California

To provide work opportunities and skills development to people with barriers to employment.
thegoodwill.org

Got Ur 6

To promote the physical, intellectual, emotional, social and economic wellbeing of all citizens of Boron and surrounding areas. To empower all.
gotur6.net



LifeSTEPS

Greater Bakersfield Legal Assistance

To provide free legal assistance in civil matters to members of Kern County who are unable to afford legal assistance.
gbla.org

H.E.A.R.T.S. Connection

To enhance the quality of life for people with special needs through a family directed resource center.
heartsfrc.org

Habitat for Humanity Golden Empire

Seeking to put God's love into action, Habitat for Humanity brings people together to build homes, communities and hope.
habitatbakersfield.org

Healing Hands, Healing Hearts

To provide comfort, care, and connection to the critically, chronically, and terminally ill.
healinghandshealinghearts.org

Helping HART

To provide assistance to law enforcement and victims of hit-and-run accidents.
helpinghart.org

Henrietta Weill Memorial Child Guidance Clinic

Providing mental health and substance abuse services and the resources necessary to promote recovery for children, adults and families.
hwmcgc.org

Honor Flight Kern County

To honor and send America's veterans to Washington D.C. to see the memorials built in THEIR honor - at no cost to the veteran.
honorflightkerncounty.org

Independence Through GRACE Foundation

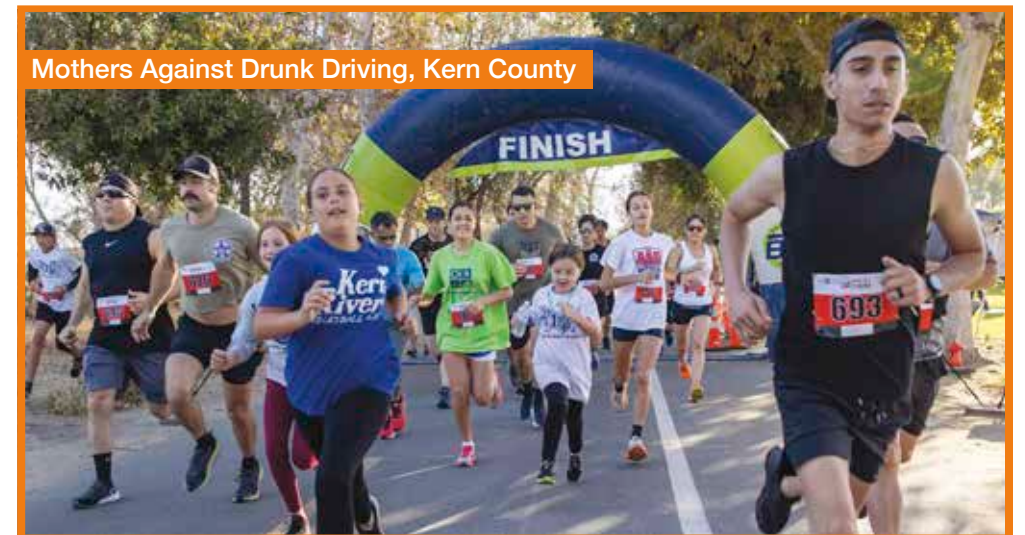
A faith-based enrichment program enhancing the lives of adults with intellectual disabilities.
itsgrace.org

Independent Living Center of Kern County

Empowering people with disabilities to live as independently as they can.
ilcofkerncounty.org

Indian Well Valley Economic Development Corporation

To enhance the economic prosperity and quality of life in the Indian Wells Valley.
iwvedc.co



Mothers Against Drunk Driving, Kern County

JJs Legacy

Educating Kern County Residents and inspiring them to become registered organ and tissue donors and by providing support to donor families.
jjslegacy.org

Junior League of Bakersfield

An organization of women committed to promoting voluntarism, developing the potential of women and to improving the community through volunteers.
juniorleagueofbakersfield.org

Keepers Transformation House Women's Discipleship Program

To restore and empower women in crisis to a dignified and purposeful life in Christ.
keeperstransformationhouse.org

Kern Around the Clock Foundation

Providing each client a quality of life with the appropriate level of care.
bakersfieldcare.com

Kern Autism Network

Providing trustworthy, respectful & caring services that impact the community on the autism spectrum.
kernautism.org

Kern CO Sheriffs Tehachapi Mountains Search and Rescue

Maintaining an organized group of experienced persons to assist the Kern County Sheriff's Office in conducting search and rescue operations.
facebook.com/profile.php?id=100081876811782

Kern Community Foundation

Growing Community. Growing Philanthropy.
kernfoundation.org

Kern County WWII Veterans Memorial

To create a permanent tribute honoring all Kern County WWII Veterans and those who supported them.
kerncountywwiimemorial.com

Kern Leadership Alliance

To see every believer in Jesus activated in his or her sphere of influence to transform Kern County.
kernleadershipalliance.org

Kern River Valley Heritage Foundation

Protecting the natural, scenic, agricultural, & historic land of the Kern River Valley through stewardship, restoration and education.
krvhf.org

Kern River Valley Senior Citizens Inc.

Connecting older adults to resources, referrals, and building relationships for healthier living.
facebook.com/people/KRV-Seniors/100076322289441/

KHSDLynx

Providing homeless high school students with clean, seasonal, age appropriate clothing, hygiene items, school supplies and food.
facebook.com/KHSDLynx

Lactation Station Inc.

Offers free education & hands on nurse-facilitated support to our community of mothers.
themotherhoodcollective.net

LifeSTEPS

Provide effective educational and supportive services to maximize the strengths of families, seniors, and at-risk youth to build resilient communities.
lifestepsusa.org

HUMAN SERVICES & COMMUNITY BENEFIT



PathPoint

Listen to Shafter
Operate programs that are conceived, designed and evaluated through a process of conversation with our neighbors.
listentoshafter.org

Make-A-Wish Northeastern & Central California and Northern Nevada
Together, we create life-changing wishes for children with critical illnesses.
necannv.wish.org

MARE Riding Center
Provides equine-assisted therapies and activities for children, adults & veterans living with special needs and disabilities.
mareridingcenter.com

Mercy House - Brundage Lane Navigation Center
To be a leader in ending homelessness by providing a unique system of dignified housing opportunities, programs, and supportive services.
mercyhouse.net/portfolios/blnc

Mercy Housing California
To create stable, vibrant and healthy communities by developing, financing and operating affordable, program-enriched housing for families, seniors and people with special needs.
mercyhousing.org/california

Mexican American Opportunity Foundation
To provide assistance and activities that promote self-sufficiency.
maof.org

Missing in Action Remembered
Providing an effective means of community outreach to inform and educate the public about the plight of veterans still Missing In Action.
miaremembered.org

Mothers Against Drunk Driving, Kern County
End drunk driving, help fight drugged driving, support the victims of these violent crimes, and prevent underage drinking.
madd.org

Mountain Communities Family Resource Center, Inc.
Improving quality of life for residents of the Frazier Mountain Communities, one individual and family at a time.
mcfrc.com

Morning Star Fresh Food Ministry
Fighting hunger and feeding souls with fresh food and the love and hope of Jesus.
morningstarfresh.org

NALEO Educational Fund
Facilitates full Latino participation in the American political process.
naleo.org

NAMI Kern County
To provide support, education and advocacy for those with mental illness and their loved ones.
namikerncounty.org

National Association for the Advancement of Colored People (NAACP) - Bakersfield
To ensure political, educational, social, and economic equality of rights of all persons and to eliminate race-based discrimination.
naacpbako.com

No Sister Left Behind
To establish a networking system of support among Black women to promote total well-being.
nosisterleftbehind2.com

Noel Alexandria Foundation
To raise awareness and provide free resources to families affected by pregnancy and infant loss.
noelalexandriafoundation.org

North of the River Recreation Foundation
Preserving the community's vitality and livability by raising funds to enhance and expand parks, recreation and programs, and providing access and opportunity for all.
norfun.org

Orlie's Shoe Drive
Providing new shoes and quality time giving hope to the deserving children in Kern County at Christmas time.
orliesshoedrive.com

PATH (People Assisting the Homeless)
To end homelessness for individuals, families, and communities.
epath.org

PathPoint
Working with people with disabilities to strengthen workplace abilities, build life skills, and develop meaningful relationships.
pathpoint.org

Portrait of a Warrior Gallery
Keeping the memories of the Kern County Fallen from post 9/11 service alive.
kernwarriors.org

Rebuilding Together Kern County
Repairing homes, revitalizing communities, rebuilding lives.
rebuildingtogetherkerncounty.org

Red Rock Canyon
To assist California in interpreting, developing and conserving Red Rock Canyon State Park for the benefit of the public.
redrockrca.com

Riverstone Wellness
Believing in whole body and mind health to foster connection so our community can transform, together.
riverstonewellness.org

Rosamond Hills, Inc.
Providing affordable housing to low-to-moderate-income seniors and persons with qualifying disabilities.
rosamondhillsapts.com



Mountain Communities Family Resource Center, Inc.

Save a Life Today (S.A.L.T.)
To provide suicide education, prevention and postvention.
saltkc.org

Self-Help Enterprises
To work together with low-income families to build and sustain healthy homes and communities.
selfhelpenterprises.org

SJV Water
Covering politics of water in the San Joaquin Valley, where crops that create billionaires grow in fields next to communities without drinkable water.
sjvwater.org

Special Olympics Southern California
Enriching and transforming lives through sports, education, and health for athletes with intellectual disabilities.
sosc.org/kern

St. Malachy Conference of St. Vincent de Paul Society
A network of friends building a more just world through personal relationships with and service to people in need.
stmalachyconferencesvdp.com

Stewards Inc.
Advocating for homelessness prevention through connection to social services, resources, and acting as an appointed representative payee service.
stewardsync.org

Stewards of the Sequoia
Promoting responsible recreation and environmental stewardship.
stewardsofthesequoia.org

Storm Breakers
To promote mental health within the Christian Community.
stormbreakers.org

Teen Challenge of Southern California
Providing youth, adults and families with an effective Christian faith-based solution to life controlling drug and alcohol problems.
teenchallenge.org/centers/kern-county

Tehachapi Cancer Foundation
Inspired by Love Driven by Compassion.
tehachapicancerfoundation.org

The Blessing Corner
To provide opportunities, to enrich indigent lives through provision of basic human services; via a network of our valued resources to offer HOPE.
theblessingcorner.com

The Center for Sexuality & Gender Diversity
Providing a safe, supportive space and services to gay, lesbian, bisexual and transgender adults and teens.
thecenterbak.org

The Hope Center Inc
To assist low-income & help them move toward wholeness - physically, emotionally & spiritually.
hopecenters.net

The Mission at Kern County
To provide an environment conducive to the physical, emotional and spiritual well-being of the people we serve.
themissionkc.org

The N.E.E.D.S. Center, Inc.
To improve clients' health and wellbeing by providing food, hot meals, rent/utility assistance, clothing, household items, and prescription payments.
facebook.com/pages/needs-center/862198703900727

The Open Door Network
Supporting homeless families in crisis, helping them to stabilize, obtain permanent housing and become self-sufficient.
opendoorhelps.org

The Salvation Army Service Extension
To provide basic human needs to the rural areas of Kern County in fulfillment of The Salvation Army's goal of "Doing the Most Good."
westernusa.salvationarmy.org

The Woman's Club of Bakersfield
A community service club dedicated to strengthen the community and enhancing the lives of others through volunteer service.
womansclubbakersfield.org

Together Spay It Forward, Inc
Fundraising to provide FREE Spay & Neuter to Kern County dogs and cats. We also provide vaccine clinics & microchips.
togetherspayitforward.com

Trinity Medical Transport Foundation
Providing low-cost and free non-emergency medical transport services to the uninsured and low-income communities.
trinitymedicalfoundation.org

UFW Foundation
To empower communities to ensure human dignity.
sisepuede.org

United Way of Kern County
Mobilizing donors, volunteers, and advocates to improve the lives of Kern County residents.
uwkern.org

Valley Achievement Center
To empower individuals on the autism spectrum or with other developmental disabilities to achieve the highest quality of life.
autism-vac.org

Valley Center for the Blind
Assisting blind and visually impaired persons in experiencing more independent and opportunity-filled lives.
myvcb.org

Victory Family Services
Supporting foster children and families, because every child deserves victory.
victoryfs.org

Vision y Compromiso
Supporting promotoras and community health workers to address disparities and improve health outcomes for underrepresented communities.
visionycompromiso.org



Special Olympics Southern California

HUMAN SERVICES & COMMUNITY BENEFIT



Y-Empowerment Inc.

Volunteer Center of Kern County, Inc.
To mobilize people and resources to deliver creative solutions to address community issues through volunteerism.
volunteercenter.info

Wendale Davis Foundation
To provide resources that will help historically marginalized groups to become productive members in their communities.
wendaledavisfoundation.org

Women's Center-High Desert, Inc.
Providing a network of prevention, education and direct client services relating to domestic violence, sexual assault and child abuse for Eastern Kern and surrounding counties.
wc-hdinc.org

Wounded Heroes Fund
Organization for Kern County Veterans and their families, dedicated to facilitating healthy transitions through community, support, and appreciation.
thewoundedheroesfund.org

Wounded Warrior Project
To honor and empower Wounded Warriors.
woundedwarriorproject.org

Y-Empowerment Inc.
To help families and individuals overcome adversities through social interaction and education.
yempowerment.org

Your Lot and Parcel
Preserving historic landmarks for future generations, mental health, physical well-being and in a safe home and family environment.
yourlotandparcel.org



A Better Bakersfield & Boundless Kern, otherwise known as **B3K Prosperity**, is a public-private collaboration to develop a roadmap and investment plan for economic growth and inclusion in Kern County.

Building on a rich history of economic development efforts, B3K Prosperity connects and coordinates existing activity for shared problem-solving and the drafting of a blueprint for future regional success. Supporting a rich vision for our community's future is at the very heart of Kern Community Foundation's work and we proudly serve as a member of the B3K Core Team.

Since early summer 2020, a group of business, government, education, and community stakeholders have organized to address three primary challenges facing Kern County:

1. Extreme pressure on the industries that historically drive our region's economy;
2. A lack of quality jobs - and access to them - that would enable residents to be self-sufficient and reach the middle class; and
3. The need to align fragmented regional public-private efforts and investment behind common goals.

Over time, B3K Prosperity will produce several tools to attract investment and promote growth, prosperity and inclusion, such as:

- A map of existing economic development programs, initiatives and organizations;
- A Strategy Report with goals, objectives, tactics and performance measures;
- An Operating Plan with local commitments for action and implementation of collectively agreed-upon goals;
- Investment Prospectuses to seek immediate support for projects; and
- A structure for on going governance, sustainability and maintenance of B3K Prosperity.

To learn more about this exciting initiative and consider opportunities to join us, please visit b3kprosperity.org.



Building strong communities

Aera's committed to making positive impacts on the lives of residents in the communities where our employees work and live, by amplifying the crucial work local nonprofit organizations do.

We will continue producing the oil and gas Californians depend on while helping the state meet its bold climate goals. We are committed to being an employer of choice and a company that does more than just business here, well into the future. We realize that the support we provide our community partners is critical to their mission and future success.

We value education, environmental stewardship, public health and safety and strong economies and we are passionate about helping Kern County's future scientists, engineers, and teachers realize their full potential. They might just be the energy workers who will help California achieve its energy future.

At Aera, we believe that everyone should have access to safe, reliable, and affordable energy and the livelihoods of our neighbors should be made better as we seek to improve the lives outside our walls as well as within.



Join the conversation.



aeraenergy.com

Thank You to Our Fundholders

- Aera Energy Fund
- Aera Energy Fund for Conservation and the Environment
 - AFG Project Fund
- Al Gutierrez Memorial Scholarship Fund
- Alpha Phi Alpha Fraternity Kappa Eta Lambda Chapter Scholarship Fund
- Arthritis Association of Kern County Fund
 - Arvin Union Congregational Church Scholarship Fund
 - Arvin Women's Club - Ellen Kovacevich Scholarship Fund
 - B3K Prosperity Fund
 - Bailey Schweitzer Memorial Scholarship Fund
 - Bakersfield ARC Foundation Endowment Fund
- Bakersfield High School Endowment Fund
- Bakersfield High School Operational Fund
 - Bakersfield Museum of Art Fund
 - Bakersfield Pregnancy Center Stewardship Fund
- Bakersfield Youth Jobs Program Fund
 - Batey Charitable Fund
 - Bekarev Family Fund
- Beman Vernon Family Fund of Kern
- Ben and Bryan Batey Charitable Fund
 - Bertha M. Rankin Fund
 - Better Bakersfield and Boundless Kern Fund (B3K)
- Bob & Etta Otto Scholarship Fund
 - Brian and Cherilee Ezell Fund
 - Bryce & Florence York Fund
- Buena Vista Museum of Natural History & Science Fund
- California Living Museum (CALM) Al Robbins Endowment Fund
- Caratan Family Scholarship Fund
- CCS Transition Scholarship Fund
 - Charity Giving Card Fund
- Charlotte and Max Steinert Family Fund
 - C. Jeff & L. Elaine Thomson Commemorative Fund
- Claude & Shirley Fiddler Charitable Fund
 - Coe, Gorman, Diggles Foundation
 - Community Disaster Relief Fund
 - Community Endowment Fund
 - Community Nest Fund
- Connected Community Network Fund
 - Curtis & Peggy Darling Fund
- Curtis & Peggy Darling Fund #2 (D636)
- David Anderson Athletic Scholarship Fund
 - David Moore Agricultural Scholarship Fund
 - Day of Remembrance Fund
- Derek Brown Memorial Scholarship Fund
 - Dev Charitable Fund
- Dolores & Victor Cerro St. Francis Scholarship Fund
 - Donald and Earlene Barnes Charitable Fund
- Dr. Joseph E. Anderson Scholarship Fund
- Dr. Richard P. Pierucci Scholarship Fund
 - Duane and Corey Keathley Charitable Fund
 - East Bakersfield High School Class of 1957 - Ron Robison Memorial Scholarship Fund
- Ed and Sue Green Family Charitable Fund
 - Edward M. and Constance W. Tilbury Endowment Fund
 - Ellis and Cora Andrews Family Scholarship Fund
 - Eugene J. Voiland Charitable Fund
- Eunice Sears Scholarship for Music Fund
- Fisherman's Fellowship Charitable Fund
- Foothill Foundation Endowment Fund
 - Fred and Virginia Hamisch Charitable Fund
 - Garrett and Elizabeth Ming Charitable Fund
- Gayland and Joy Smith Educational Fund
- Gayland P. & Joy A. Smith Family Fund
 - Gee Durn Fund
- George & Karen Johnson Family Fund
 - Give Big Kern Fund
 - Handouts Don't Help Fund
 - Hay Family Foundation Fund
- Heart Never Forgets Endowment Fund
- Helen Hawk Windes Charitable Fund
 - Honor Run Scholarship Fund
- Jack Beaton Memorial Scholarship Fund
 - J & C Bowman Fund
 - Jean Baughman Legacy Fund
 - JLB Community Center Fund
- Justin and Carrie Leland Charitable Fund
 - Juvenile Court Special Needs Fund for Foster Children
 - Karin Enebo Memorial Violin Scholarship Fund
 - Kayli Memorial Fund
 - Kern Alliance of Nonprofits
 - KernArts Forever!
 - KernArts Now!
 - Kern Community Foundation Fund
 - Kern Community Foundation Operating Fund
 - Kern Community Foundation Real Property LLC
- Kern County 1929 Charitable Foundation
 - Kern County COVID-19 Relief Fund
 - Kern County Earthquake Disaster Relief Fund
 - Kern Futures Scholarship Fund
 - Kern Futures Scholarships Now Fund
 - Kern Futures Scholarships Together Fund
 - KernHealth Forever!
 - KernHealth Now!
 - Kern High School District Counselors Scholarship Fund
- Kern Preparedness and Resiliency Fund
 - Kern Real Estate Foundation Operating Fund
- Kern River Preserve Stewardship Endowment Fund
- Kern River Valley Community Fund (Endowed)
- Kern River Valley Community Fund (Non-Endowed)
- Kern River Valley Educational and Cultural Foundation Fund
- Kern Valley Hospital Foundation Endowment Fund
- Kern Veterans Memorial Fund
- Kristen Barnes Charitable Fund
 - KRVHF Stewardship Fund
 - Lampe Fund
- Larry Carr Memorial Scholarship Fund
- Leaders in Life Endowment Fund
 - Linda Lopez Charitable Fund
 - LinkEd Fund
- Links for Life Legacy Endowment Fund
- Margaret Urner Bakersfield Symphony Orchestra Endowment Fund
- Margaret Urner Bakersfield Symphony Orchestra Fund
 - Matthews Family Trust Fund
- Merle Haggard Musical Scholarship Fund
 - Michael and Jennifer Young Family Charitable Fund
 - Misono Family Fund
 - Nickel Family Fund
- Nickel Family Scholarship for Agricultural Education Fund
- Nnanedu Odeluga Memorial Fund
 - Noel E. Daniells Permanent Endowment Fund
 - Nonprofit Search Fund
 - North Kern Christian School Endowment Fund
 - Oscar and Libbie Rudnick Scholarship Fund
 - Palitz Family Charitable Fund
 - Parks-Anderson Charitable Fund
- Peter Anthony Catholic Education Fund
 - Phillips Family Fund
- Phyllis J. Bivins Memorial Fund
 - President's Fund
 - Prolific Talents Fund
- Rayburn and Joan Dezember Charitable Fund
 - Richard & Lorraine Davies Charitable Fund
- Robert and Judith McCarthy Family Fund
 - Robert C. and Doreen Boylan Abrams Fund
 - Rod Stiefvater Foundation Fund
- Ron Graffius Memorial Scholarship Fund
 - Sanders Family Fund
- Sandys S. Tang & Mora Tang Fund
 - Scoliosis Strong Fund
- Scott Kirschenmann Family Foundation Fund
- Sean E. Farley Memorial Scholarship Fund
- Shafter Historical - Ohannesson Fund
 - Shafter Historical Society Museum Curator Fund
- Sheldon Family Charitable Fund
 - Sheriff's Employees' Benefit Association Scholarship Fund
 - Shirley Farnsworth Fund
 - S & L Boyle Family Fund
- Southern Sierra Council Boy Scouts of America - Camp Kern Fund
 - Spotlight Theater Reserve Fund
- SSRS Stewardship Endowment Fund
- Stan and Nancy Wilson Benevolence Fund
 - The Arvin Women's Club Scholarship Fund
- The Bakersfield Aquatics Center Fund
 - The Blanche & Irma Weill Foundation Fund
- The Blomgren Family Scholarship Fund
- The Boydston Family Charitable Fund
- The Cat People Endowment Fund
 - The David and Jan Nicholas Charitable Fund
- The Donald E. and Audrey W. Barnes Charitable Fund
 - The Fox Theater Foundation Endowment Fund
 - The George and Helen Stewart Memorial Scholarship Fund
 - The Golden Empire Gleaners Endowment Fund
 - The Gordon Charitable Fund
 - The Green Hotel Restoration Fund
 - The Jack and Mary Lou Thomson Endowment Fund
 - The Judith B. Chase Family Fund
 - The Kern 178 Corridor Fund
 - The Marjorie Rump Charitable Endowment Fund
 - The Marvin Steinert Family Charitable Fund
 - The Mayor of Bakersfield Scholarship Fund
- The Umbrellas Mural Project Fund
 - The Women's and Girls' Fund
- Tim and Katie Werdel Giving Fund
- Tom Pryor PTSD Awareness Fund
- Trang Family Charitable Fund
 - Trinity Foundation Fund
- Upper Kern Fisheries Enhancement Fund
 - West High School Alumni Association Endowment Fund
 - West High School Alumni Association Operational Fund
 - West High School Class of 1973 Reunion Operational Fund
- Westminster Presbyterian Church Foundation Endowment Fund
- Westminster Presbyterian Church Foundation - Global Gifts End
- Women's and Girls' Non-Endowed Fund
 - Wright Family Foundation
- Youth 2 Leaders Education Fund

KERN COMMUNITY
FOUNDATION

5701 Truxtun Avenue, Suite 110, Bakersfield, CA 93309
Phone: 661-325-5346 • Fax: 661-325-5358
kernfoundation.org • Email: info@kernfoundation.org



Printing of this edition of the *Community Giving Guide* is provided by grants from: