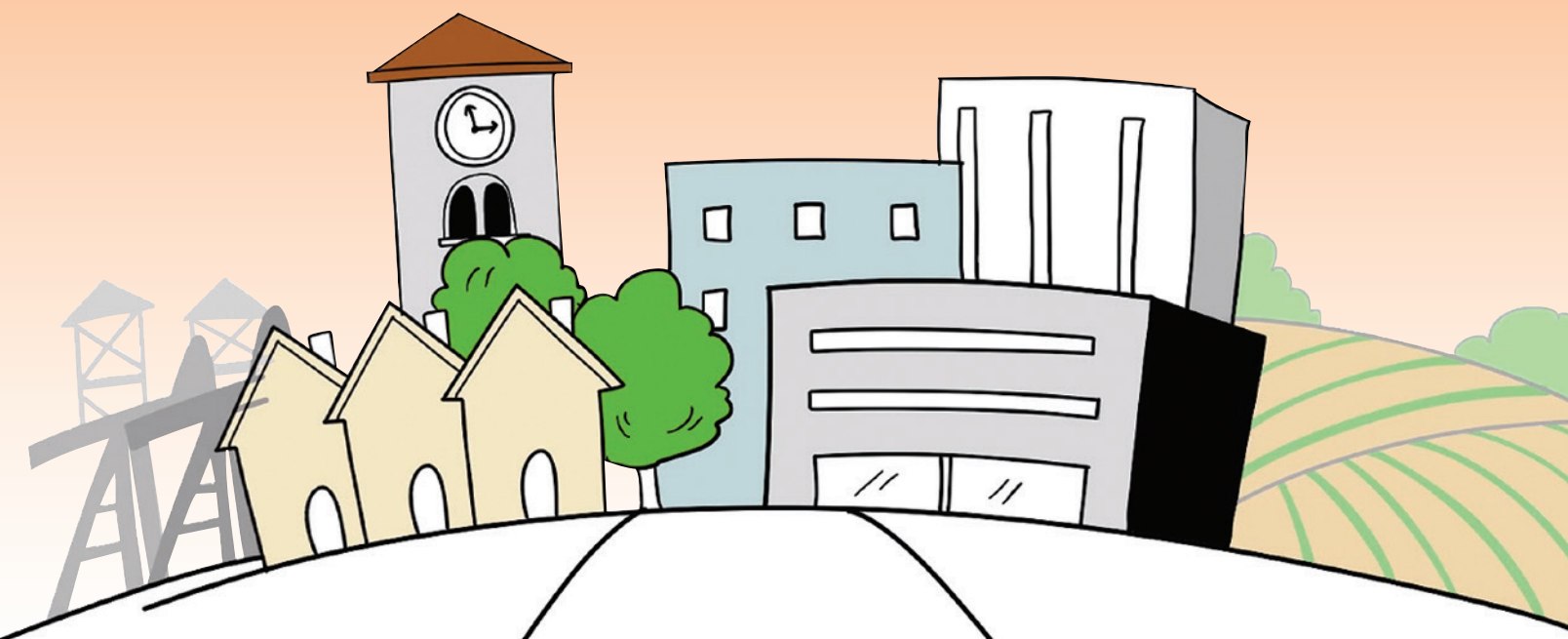


# CHARITY GIVING GUIDE



KERN COMMUNITY  
FOUNDATION

Growing community.  
Growing philanthropy.



## WHAT IS A COMMUNITY FOUNDATION?

Community Foundations help build and strengthen a community and bring together people and organizations that want to make a difference. They are tax-exempt public charities that guide philanthropy and are dedicated to improving the quality of life in the areas they serve.

# Kern Community Foundation is...

... a 501(c)(3) public charity with a powerfully simple mission — Growing Community. Growing Philanthropy. We are known as a home for local philanthropists, a results-oriented grantmaker, and a trusted community leader.

... improving the quality of life in Kern County by increasing charitable giving, educating and connecting donors to community needs they care about, and taking the lead on critical community issues.

... transforming generosity into impact, making Kern County a better place to live, to work, and to visit — bringing together hundreds of donors to grant out millions of dollars to worthy causes since 1999.

## Partner with us!

### Give to the Foundation

Support one of our initiatives or our operations, increasing our impact.

### Give through the Foundation

Establish your own fund, have us work for you, and support the causes you care about.



Together – we make  
our community a  
better place.



# KERN COMMUNITY FOUNDATION

Use this guide to inspire your local giving!

# Arts and Culture

## The Arts Council of Kern

**Mission:** To provide support and promote arts access, advocacy, and education for all Kern County residents and visitors.



## Bakersfield Art Association

**Mission:** Opportunity for study and improvement of art technique, encourage art in community, offer art scholarships, and exhibition of member art locally.

## Bakersfield Community Concert Association

**Mission:** To enhance the cultural, social and educational life of all people living in our communities.

## The Bakersfield Fox Foundation

**Mission:** Enhance the quality of life in Kern County through the effective operation of the Historic Fox Theater as the area's premier cultural center.

## Bakersfield Master Chorale, Inc.

**Mission:** To provide a venue for the appreciation and awareness of choral music and choral arts education.

## Bakersfield Museum of Art (BMOA)

**Mission:** Provides visual arts experiences through exhibition, education, community outreach and special events.

## Bakersfield Symphony Orchestra

**Mission:** To provide performances of great music and provide music education for the young people of Kern County.



## Center of the World Festival, Inc.

**Mission:** Developing an interdependent and ecologically sensitive community through social Theater of creative arts.

## Downtown Bakersfield Development Corporation

**Mission:** Inspires community leaders to unite community resources to develop its Downtown as a pre-eminent California community.

## The Green Hotel Restoration Foundation

**Mission:** To preserve the Hotel and historic oak and provide access to the community.



## Imagine Ballet Company

**Mission:** To enrich our community through art and provide excellence in youth development.

## Kawaiisu Language and Cultural Center

**Mission:** Revitalization and documentation of the Kawaiisu indigenous language and traditional ways.

## Kern County Museum Foundation

**Mission:** Showcase and preserve Kern County's rich history and culture in entertaining and innovative ways through: Education, Exhibits, Events.

## Kern Dance Alliance

**Mission:** Dedicated to the educational and cultural needs of Kern County.



## Kern River Valley Art Association

**Mission:** To provide opportunities, resources and exhibition venues for artists with an emphasis on art education and emerging artists.



## Ridgecrest Chamber Music Society

**Mission:** To promote education and awareness of chamber music and provide community members with high quality music.

## Theatre Arts Productions Spotlight Foundation

**Mission:** To promote and teach Theater Arts and Music in a safe, fun environment for adults and children.

## Valley Public Radio

**Mission:** Expanding your world through voices and sounds that inform and inspire.

### \$2,500 Grant

**To:** Bakersfield Symphony Orchestra

**From:** Curtis & Peggy Darling Fund



### Your gift makes a difference!

**\$1,000** to Ridgecrest Chamber Music Society provides two in-school programs presented by professional chamber musicians.

**\$300** to Kern River Valley Art Association provides an art workshop for children.

**\$300** to Theatre Arts Productions Spotlight Foundation provides tuition for one underprivileged child to participate in the North of the River theater arts program.

**\$135** to Bakersfield Museum of Art sends a child to art camp for one week.

**\$50** to Kern Dance Alliance will pay for one "SHINE for Girls: Math+Dance=Success" tuition.





# Education and Youth Development

## African American Network of Kern County

**Mission:** Promote responsible and meaningful programs designed to educate, achieve economic parity, and create job opportunities.

## The Agape Love Connection, Inc.

**Mission:** Providing quality educational opportunities for children in Liberia West Africa.

## Athletes' Advantage Academy

**Mission:** Dedicated to the radical optimization of human health, physical fitness, and athletic performance.

## Bakersfield College Foundation

**Mission:** Expanding access and opportunity for students of all ages.

## Bakersfield Police Activities League

**Mission:** Guide at-risk youth through quality educational and athletic after-school programs.

## Benefit Bakersfield Foundation

**Mission:** To serve and give to local community projects and outreach programs that serve the less fortunate.

## Best Buddies

**Mission:** Provides friendship, leadership development, and employment services to individuals with intellectual and developmental disabilities.

## Borax Visitor Center Foundation

**Mission:** Dedicated to public education about mining and minerals and providing support to charitable organizations in surrounding communities.

## Boy Scouts of America Southern Sierra Council

**Mission:** To prepare young people to make ethical and moral choices over their lifetimes by instilling in them the values of the Scout Oath and Law.



## Boys and Girls Clubs of Kern County

**Mission:** To enable all young people, especially those who need us most, to reach their full potential as productive, caring, responsible citizens.

## Buena Vista Museum of Natural History Inc.

**Mission:** To educate and involve the community, through recovering, preserving, and displaying local and world wide natural history objects.

## China Lake Museum Foundation

**Mission:** Educate visitors about air armament technology development at NAWCWD China Lake, and provide STEM education.



## CSUB Foundation

**Mission:** To advance the University by creating strong and lasting relationships that enrich the student experience and promote excellence in education.

## Farmer Veteran Coalition

**Mission:** To mobilize veterans to feed America.

## Girl Scouts of Central California South

**Mission:** Assists girls in developing leadership skills by helping them discover, connect, and take action.

## Jim Burke Education Foundation

**Mission:** Provide opportunities for students to excel by enhancing educational and leadership development opportunities.

## Junior Achievement of Bakersfield

**Mission:** To inspire and prepare young people to succeed in a global economy.

### \$1,000 Grant

**To:** Boys and Girls Clubs of Kern County  
**From:** Sandys S. Tang & Mora Tang Fund



### Your gift makes a difference!

**\$750** to Athletes' Advantage Academy provides athletic training equipment for off-site needs with after-school programs and future soldier training.

**\$500** to CSUB Foundation sends a student to an academic conference or competition.

**\$275** to Police Activities League pays for a child to attend League for one month.

**\$200** to China Lake Museum Foundation pays for a student to attend the "So You Want to be a Rocket Scientist" summer camp.

**\$150** to Boys and Girls Clubs of Kern County provides a child in need with academic and enrichment activities after school, five days per week for one month.

**\$100** to Boy Scouts of America Southern Sierra Council sends a Cubscout to Day Camp.



# Education and Youth Development



## **Kern Economic Development Foundation**

**Mission:** A research and education-based organization that supports Kern County businesses and communities in reaching their full economic potential.

## **Kern Literacy Council**

**Mission:** Empowering individuals to improve their quality of life through literacy education since 1966.

## **Kern Partnership for Children and Families**

**Mission:** Seeks to meet the needs of low-income and foster children in Kern County.



## **Kern River Valley Revitalization Corp.**

**Mission:** Facilitating the social, natural, and financial health of the Kern River Valley for this and future generations.

## **Latina Leaders of Kern County**

**Mission:** To foster leadership, identify and develop opportunities for Latinas, and influence key issues affecting our community.

## **League of Dreams, Inc.**

**Mission:** To provide every child a chance to play through competitive and adaptive sports programs.



## **Maturango Museum of Indian Wells Valley**

**Mission:** To preserve, interpret and develop an appreciation for the natural and cultural history of the Northern Mojave Desert.

## **Parent Institute for Quality Education (PIQE)**

**Mission:** To provide families with the knowledge and skills to partner with schools and communities to ensure their children achieve their full potential.

## **Probation Auxiliary County of Kern (PACK)**

**Mission:** To provide support and services with the Kern County Probation Department, enabling people young and old to become responsible citizens.

## **R.M. Pyles Boys Camp**

**Mission:** To provide at-risk boys with the opportunity to attend a camp that promotes character development, positive male mentoring and education.

## **Ready to Start**

**Mission:** A five week kindergarten readiness program designed for students with little or no preschool experience.

## **Taft College Foundation**

**Mission:** Dedicated to supporting student success through fund raising and development of community relationships.

## **Valley PBS**

**Mission:** Enriches, educates, and strengthens our diverse Valley community through the power of public service media.

## **Youth 2 Leaders Education Foundation**

**Mission:** To unlock the power of higher education.

## **Youth for Christ of Kern County**

**Mission:** Meeting the needs of young people physically, mentally, socially, and spiritually throughout Kern County.

### **\$500 Grant**

To: League of Dreams, Inc.

From: Sanders Family Fund



### **Your gift makes a difference!**

**\$300** to League of Dreams, Inc. provides one set of Beep Bases and equipment to be used for visually impaired athletes.

**\$250** to Latina Leaders of Kern County sends one high school student through an eight month Youth Leadership development program.

**\$250** to Taft College Foundation provides tutoring for a STEM student.

**\$250** to Kern Economic Development Foundation provides soft-skills curriculum, monthly workforce-prep mentoring, and a field trip to one student interested in a STEM career.

**\$200** to Parent Institute for Quality Education pays for one family to learn how to prepare their children for a college education.

**\$100** to Maturango Museum of Indian Wells Valley provides paper and coloring products for one semester of art and design programs in the local schools.



Find these organizations on our YouTube channel!

# Kern Scholarship Fund

Support deserving students, from Kern County high schools, pursuing higher education.

## Power of Collective Giving

Collective giving allows like-minded people to leverage philanthropic impact and make their dollars go further in the company of others. By giving to the Kern Scholarship Fund, you join similar donors who are passionate about supporting Kern County students.

## Power of the Common Application

Kern Community Foundation uses an online common application to facilitate all our scholarship funds. By completing one application, students are in the running for funding from multiple sources. As a donor, this also means your dollars are more likely to have a greater impact!



## More Than a Scholarship

Students awarded from Kern Community Foundation receive funding and a collection of valuable services:

- Initial counseling
- Career planning
- Financial literacy
- Academic tracking
- Renewal eligibility
- Personalized support

Join us in helping local students achieve their dreams of higher education!

## Student Spotlight: Haley Cazavalos

Born and raised in Bakersfield, California, Haley represents just one of the 115 students awarded scholarships by Kern Community Foundation in 2015. She grew up in North Bakersfield, graduating from North High School. "I was a quiet kid," Haley remembers, "I mostly kept to myself. I was really responsible, way more than a normal kid."

Due to medical injuries affecting both of her parents, Haley learned about responsibility in a more serious and pressing way. As a high schooler she sacrificed many of the fun social events to help care for her home and parents. Money was tight and pain and lack of mobility were an everyday reality for her family. Her parents knew that, despite their circumstances, they wanted their daughter to achieve her dream of going away to school and earning a degree. If they could support her in this, then she could be the first in their family to hold this badge of honor.

Teachers and school staff at North High helped her over the hurdles of applications for admission, financial aid, and



scholarships. "My chemistry teacher, Mrs. Wells, was so amazing," Haley says, "I could ask her anything about college and she would always help me. Mrs. Robles in the Career Center, too. I would never have heard about this scholarship if it weren't for her." With their help, Haley applied to several schools and, with a strong application and a 4.1 GPA, was accepted to many.

Haley decided San Diego State was the perfect fit, but the cost was concerning. With a price tag over \$27,000, Haley realized that she would need some serious financial aid. She completed her Application for Federal Student

Aid (FAFSA), securing invaluable State and Federal Grants to assist with cost, but unfortunately, those came up short. She needed to apply for, and secure, competitive scholarship funding to fill the gap.

Haley learned of scholarship funds available at Kern Community Foundation and used the online Common Scholarship Application. She made her application a real contender, finding school staff to proofread her essay and write letters of recommendation. After months of uncertainty, Haley received word at North High's Financial Aid Award Night – she had been awarded a \$3,000 renewable scholarship award, making her dreams of college a reality.

Now a thriving Freshman at San Diego State studying to become a science teacher, Haley looks back on the last six months, "College is a really big step. Really big. I was used to doing the same thing every day. At home, nothing changed. This change, it was hard. It took some time, but I know I made the right decision to come. I love it here."



# Environment and Animals

## Bakersfield SPCA

**Mission:** Kern County's only no-kill shelter provides homeless animals with a safe haven until they can be rehomed.



## California Living Museum Foundation (CALM)

**Mission:** To display and interpret native California animals and plants for education, recreation and conservation.

## The Cat People

**Mission:** To end the needless suffering of felines in Kern County through rescue, rehabilitation, adoption, community education, and low-income assistance programs.

## Critters Without Litters

**Mission:** Helping pets and pet owners with low-cost spay/neuter services.

## Keep California Beautiful

**Mission:** Dedicated to alternative waste management, beautification, community networking and outreach.

## Kern River Corridor Endowment and Holding Co. Inc.

**Mission:** Dedicated to habitat restoration, education, outreach and recreational opportunities at the Panorama Vista Preserve.

## Marley's Mutts Dog Rescue

**Mission:** Rescue, rehabilitate, and rehome discarded or abused and forgotten animals.



## Sequoia ForestKeeper

**Mission:** To protect and restore the ecosystems of the southern Sierra Nevada – including both the Sequoia National Forest and the Giant Sequoia National Monument.

## Sequoia Riverlands Trust

**Mission:** Enhance the value of working landscapes, wildlife habitat, water resources, and open spaces to foster educational opportunities and economic vitality.

## Tejon Ranch Conservancy

**Mission:** Protecting, restoring and enhancing the native biodiversity and ecosystem values of the Tejon Ranch and Tehachapi range to benefit future generations.

## Tree Foundation of Kern

**Mission:** Tree planting and education on their proper care, to clean our air, sustain our urban forest and beautify our local landscape.

## The Wildlands Conservancy's Wind Wolves Preserve

**Mission:** To preserve the beauty and biodiversity of the earth and to provide programs so that children may know the wonder and joy of nature.

### \$500 Grant

**To:** California Living Museum (CALM)

**From:** Jack and Mary Lou Thomson Endowment Fund



### Your gift makes a difference!

**\$1,000** to Tejon Ranch Conservancy sponsors local high school students doing research and school projects.

**\$500** to Marley's Mutts Dog Rescue rescues two dogs, and provides all care necessary from rescue to forever home.

**\$300** to CALM provides care for one animal for a week in their wildlife rehabilitation program.

**\$250** to The Wildlands Conservancy provides supplies for volunteers and students to "give back" through in-service projects.

**\$200** to The Cat People covers all of the medical expenses for a cat/kitten to be adopted.

**\$120** to Critters Without Litters provides 10 vaccinations for cats or dogs.

**\$100** to Sequoia Riverlands Trust plants a native Valley Oak tree at Kaweah Oaks Preserve.

**\$100** to Bakersfield SPCA spays 2 female dogs or cats for adoption.

**\$100** to Sequoia ForestKeeper provides two hours at a local school, teaching children about the forest ecosystems and wildlife.

**\$100** to Kern River Corridor Endowment & Holding Co. Inc. plants and cares for one drought resistant native tree, shrub or vine on the Panorama Vista Preserve.



Find these organizations on our YouTube channel!



# Health

## **K** Alzheimer's Disease Association of Kern County, Inc. (ADAKC)

**Mission:** Improve the lives of those in Kern County affected by Alzheimer's disease and related disorders.

## **American Cancer Society**

**Mission:** Dedicated to eliminating cancer as a major health problem through research, education, advocacy and service.

## **American Heart Association**

**Mission:** To build healthier lives free of cardiovascular disease and stroke.

## **K** American Lung Association in California

**Mission:** Working to save lives by improving lung health and preventing lung disease.

## **K** Bakersfield Memorial Hospital Foundation

**Mission:** Contributing to the quality of life in our community by funding healthcare technology and services at Memorial Hospital.

## **K** Bakersfield Pregnancy Center

**Mission:** Provides no-cost pregnancy testing and first trimester ultrasound through its downtown office and around Kern County via the ICO Mobile Clinic.

## **K** Bike Bakersfield

**Mission:** To promote biking for everyday transportation.

## **Clinica Sierra Vista**

**Mission:** Providing comprehensive primary and preventative health care, dental, behavioral health and social services to under-served populations of Kern County.

## **CSF Nonprofit Foundation**

**Mission:** To help people in extreme poverty with no medical insurance by providing no to low cost surgeries.

## **Foundation for Movement, Inc.**

**Mission:** To improve strength, mobility, function, and life for people with physical limitations through exercise.

### **\$25 Grant**

**To:** Alzheimer's Disease Association of Kern County (ADAKC)

**From:** Anonymous



### **Your gift makes a difference!**

**\$1,000** to Bakersfield Pregnancy Center provides 20 car seats for new parents.

**\$300** to American Heart Association trains 30+ people with CPR skills.

**\$300** to Alzheimer's Disease Association of Kern County, Inc. (ADAKC) provides one family with 30 hours of respite care for their loved one.

**\$250** to Bike Bakersfield sustains its bike kitchen, where community members get affordable bike parts and earn a bike after 20 hours of volunteering.

**\$250** to Clinica Sierra Vista provides leasing of a retinopathy camera, which would serve 55 patients monthly.

**\$200** to Bakersfield Pregnancy Center provides one tank of fuel for the Image Clear Ultrasound Mobile Medical Clinic.

**\$150** to American Lung Association in California teaches 10 asthma patients about the latest in asthma treatment.

**\$75** to Foundation for Movement, Inc. pays for 10 people to attend an exercise class.



Find these organizations on our YouTube channel!!

# Health

## Friends of Mercy Foundation

**Mission:** Generates, receives and administers all philanthropic contributions in support of Mercy Hospitals in Bakersfield, California.

## Hina Patel Foundation

**Mission:** To increase Sickle Cell Awareness and provide education and services to enhance the well being of affected people and their families.

## Hoffmann Hospice

**Mission:** To celebrate the sanctity of life, provide compassionate end-of-life care and comfort the grieving.

## JDRF Central Valley Council

**Mission:** Turning Type One diabetes into Type None.



## Links for Life

**Mission:** To provide service to women and families affected by breast cancer and fund diagnostic services for the detection of breast cancer.

## National Multiple Sclerosis Society, Southern California and Nevada Chapter

**Mission:** People affected by MS can live their best lives as we stop MS, restore function and end MS forever.

## Olivia's Heart Project

**Mission:** To increase awareness about sudden cardiac arrest in children and young adults. Working to Keep Young Hearts Beating!

## Omni Family Health

**Mission:** Committed to improving the health of our communities by providing the highest quality healthcare to everyone.



## Optimal Hospice Foundation

**Mission:** To ensure families have access to hospice care by filling the gap for patients who are uninsured or under-insured.

## Partners in Care Foundation

**Mission:** Shaping healthcare by partnering with organizations and families in the work of changing healthcare systems, communities and lives.

## Ridgecrest Regional Hospital Development Foundation

**Mission:** To engage the community in partnership with the hospital to advance its mission of providing excellent care and to secure resources to support future sustainability and growth of the hospital.

## Valley Fever Americas Foundation

**Mission:** Funding of a vaccine and a cure for Valley Fever as well as public awareness.

### \$10,000 Grant

To: Hoffman Hospice

From: Batey Charitable Fund



### Your gift makes a difference!

**\$1,500** to Olivia's Heart Project will help purchase one Automated External Defibrillator (AED) to a school in Kern County.

**\$500** to Optimal Hospice Foundation provides one week of hospice care for a patient and their family.

**\$250** to National Multiple Sclerosis Society, Southern California & Nevada Chapter provides pay for two physical therapy sessions to manage MS symptoms by enhancing strength & mobility.

**\$225** to Partners in Care Foundation supports home delivered meals for recently discharged patients or frail elder patients for 30 days.

**\$100** to Links for Life provides one breast ultrasound.



Find these organizations on our YouTube channel!

# Human Services and Community Benefit

## Advanced Center for Eyecare

**Mission:** To provide high quality eye care services to the underserved and uninsured population of Kern County.



## Advancing Parenting

**Mission:** To improve the quality of parenting in communities, we place concise and unambiguous parenting tips in public spaces.



## Alliance Against Family Violence and Sexual Assault

**Mission:** To stop domestic violence and sexual assault in Kern County and assist survivors in reclaiming their lives.

## American Red Cross Kern Chapter

**Mission:** Prevents and alleviates human suffering in the face of emergencies by mobilizing the power of volunteers and the generosity of donors.

## Anchor of Hope Outreach Center

**Mission:** Providing for basic needs such as food, clothing, education, transportation, workforce development, and social service referrals.



## Assistance League of Bakersfield

**Mission:** Serving children and adults in our community through ongoing philanthropic programs.

## Autism Society-Kern Autism Network

**Mission:** Providing support, awareness, information, and education to families and public in Kern County.



## Bakersfield ARC (BARC)

**Mission:** Helping people with Intellectual and Developmental Disabilities achieve individual goals for a better life.

## Bakersfield East Rotary Foundation

**Mission:** Supports education and health locally and internationally through Rotary's Avenues of Service.

## Bakersfield Homeless Center

**Mission:** To provide support and resources to families and individuals in crisis while helping them to achieve their highest level of self-sufficiency.

## Be Finally Free

**Mission:** To assist others break bondage to become the individual they were created to be.

## Boron Alive!

**Mission:** To improve the quality of life of all residents of Boron, California.



## California Family Counseling Network, Inc.

**Mission:** Sponsors special events for charitable purposes for the psychological and mental health care of the family.

## Casa Esperanza Transitional Home for Women

**Mission:** A home for homeless women and children transitioning to independence.

## CASA of Kern County

**Mission:** Recruits, screens, trains, and supervises citizens to advocate for foster children in juvenile court and in the community.

## Center for the Blind and Visually Impaired

**Mission:** To provide opportunities that will enhance the lives of the Blind and Visually Impaired people of Kern County.

### \$200 Grant

To: MARE Riding Center

From: Sheldon Family Charitable Fund



### Your gift makes a difference!

**\$250** to Junior League of Bakersfield engages pre-emancipated foster girls in mentoring activities.

**\$250** to Independent Living Center of Kern County provides minor repairs or purchases batteries for two power wheelchairs.

**\$205** to The Mission at Kern County provides 100 meals to the homeless and disadvantaged in our community.

**\$200** to Kelly's Therapeutic Riders provides horseback riding lessons to one child who is unable to pay for their lessons (8 week session).

**\$50** to Autism Society-Kern Autism Network sends a parent to a Autism Seminar Series for educational autism training.

**\$30** to CASA of Kern County provides one box of paper used for detailed court reports for each child assigned.



Find these organizations on our YouTube channel!



# Human Services and Community Benefit



## Community Action Partnership of Kern (CAPK)

**Mission:** To provide and advocate for resources that will empower Kern County residents to become self-sufficient.

## Covenant Community Services

**Mission:** Providing hope and love to restore lives and transform generations.



## Dress for Success Bakersfield

**Mission:** Empowers women to achieve economic independence by providing support, skills training, and professional attire.

## Exceptional Family Center

**Mission:** Celebrating the success of children with developmental disabilities and their families through education and collaboration.

## Faith In Action Kern County

**Mission:** To build power with our brothers and sisters to bring about justice and eliminate suffering.

## Flood Bakersfield Ministries

**Mission:** Provides permanent housing and supportive services to maintain housing stability to the street homeless population.



## Garden Pathways

**Mission:** Transforms lives from the inside out through loving, mentoring relationships.

## Gay and Lesbian Center of Bakersfield

**Mission:** Provides a safe, supportive space and services to gay, lesbian, bisexual and transgender adults and teens.

## Global Family Care Network

**Mission:** To preserve the family and rescue desperate children with the assistance of local community organizations, volunteer caregivers, and child sponsors.



## Golden Empire Gleaners

**Mission:** To help alleviate hunger and provide food for needy persons of all ages in Kern County.

## Goodwill Industries of South Central California

**Mission:** To provide work opportunities and skills development to people with barriers to employment.

## H.E.A.R.T.S. Connection

**Mission:** To enhance the quality of life for people with special needs through a family directed resource center.

## Habitat for Humanity Golden Empire

**Mission:** Seeking to put God's love into action, Habitat for Humanity brings people together to build homes, communities and hope.

## Henrietta Weill Memorial Child Guidance Clinic

**Mission:** Providing mental health services and the resources necessary to promote recovery for children, adults, and families.



## The Hope Center Inc

**Mission:** To assist low-income families and help them move toward wholeness — physically, emotionally, and spiritually.

### \$2,500 Grant

To: Wounded Heroes Fund

From: Anonymous Fund



### Your gift makes a difference!

**\$1,800** to Garden Pathways, Inc. provides comprehensive mentoring services to a high-risk youth for a year.

**\$700** to The Hope Center Inc. provides 100 bags of food for The Infant/Children's Pantry.

**\$250** to Flood Bakersfield Ministries provides a starter kit for the move in celebration for a family or individual that now has a home.

**\$200** to H.E.A.R.T.S. Connection provides Parent Binders, teaching parents of special needs children how to organize their child's records.

**\$100** to The Salvation Army Service Extension provides shoes and school supplies for school age children.

**\$100** to Mountain Communities Family Resource Center, Inc. provides over 1000 pounds of food to serve families with children and senior citizens.

**\$20** to Habitat for Humanity Golden Empire provides a bundle of roof shingles.



Find these organizations on our YouTube channel!



# Human Services and Community Benefit

## The House of Jochebed

**Mission:** To inspire and instill purpose in young girls who are victims of child sexual exploitation and trafficking by providing a safe home.

## Housing and Opportunity Foundation of Kern

**Mission:** To empower families to become self-sufficient and improve their quality of life through support, education, and empowerment.

## K Independent Living Center of Kern County

**Mission:** Empowering people with disabilities to live as independently as they can.

## JJ's Legacy

**Mission:** Educating Kern County residents and inspiring them to become registered organ and tissue donors and providing support to donor families.

## Junior League of Bakersfield

**Mission:** Committed to promoting voluntarism, developing the potential of women, and improving the community.

## Kelly's Therapeutic Riders

**Mission:** Dedicated to serving the needs of children and adults with physical or emotional challenges.

## Kern County Taxpayers Education Foundation

**Mission:** To research, organize and disseminate information and education to the public and business community of Kern County.

## Kern County Teen Challenge

**Mission:** Providing youth, adults, and families with an effective Christian faith-based solution to life controlling drug and alcohol problems.

## MARE Riding Center

**Mission:** To serve physically, cognitively and emotionally challenged people through therapeutic activities with the horse.

## K Mercy Housing California

**Mission:** To create stable, vibrant and healthy communities by developing, financing and operating affordable, program-enriched housing.

## K The Mission at Kern County

**Mission:** To provide an environment conducive to the physical, emotional, and spiritual well-being of the people we serve.

## K Mountain Communities Family Resource Center, Inc.

**Mission:** With our partners, we enrich families, enhance community, and empower youth.

## NAMI Kern County Chapter

**Mission:** To provide support, education, and advocacy for those with mental illness and their loved ones.

## K New Advances for People with Disabilities (NAPD)

**Mission:** Dedicated to "making a difference daily" providing programs and services that encourage, enhance, and enlighten the lives of our clientele.

## North of the River Recreation Foundation

**Mission:** To provide access and opportunity for all and to preserve the community's vitality by enhancing and expanding our facilities and programs.

## The Plank Foundation

**Mission:** Local fight against cancer, local hospice support, and related immediate community needs.

## Reaching by Recycling

**Mission:** Reaching out to those who are homeless, hungry, and otherwise hurting through funds raised by your donation of recyclable goods.

## Ronald McDonald House Charities of Southern California

**Mission:** To provide comfort, care, and support to children and families in Southern California.

## The Salvation Army Service Extension

**Mission:** Provide basic human needs to the rural areas of Kern County.

## WarmLine

**Mission:** Oversees programs for families with children 0-6, focusing on healthy family relationships, peer counseling and breastfeeding.

## Women's Center-High Desert, Inc.

**Mission:** Providing direct client services for domestic violence, sexual assault, and child abuse victims.

## Wounded Heroes Fund

**Mission:** For veterans and their families affected by the War on Terror by facilitating a healthy transition to civilian life.

### \$25 Grant

**To:** Junior League of Bakersfield

**From:** Charity Giving Card Fund



# Join us to make our community a better place!

Partnering with Kern Community foundation is easier than you think. Did you know...

- Individuals, families, and even corporations can establish funds.
- Contributions are immediately tax deductible.
- Fund assets are professionally managed or you can select your own advisor.
- A minimal annual fee supports our work in the community.

**To get started, here are a few things to think about...**

## What are you passionate about?

- How do you want to change your community through giving?
- What are your unique interests?
- How will the world be different because of your commitment?

## Do you want immediate impact or enduring impact?

- Create an Expendable fund to help community organizations today.
- Build a permanently Endowed fund to support needs of today, tomorrow, and forever.

## Which type of fund meets your goals?

- Donor Advised Fund - providing the highest level of flexibility.
- Designated Fund - directed giving to specified charities.
- Field of Interest Fund - impacting organizations doing the most effective work in a particular field.
- Scholarship Fund - supporting deserving students.

## What will you give, and when?

- GIVE NOW with cash gifts, stocks and bonds, IRA assets, partnership interests and even real estate. Generally, you may deduct the fair market value of the gift and the capital gain from the donated asset will pass tax free to your fund.
- GIVE LATER with a gift to your fund from your estate - you make a charitable gift, enjoy specific tax benefits, and preserve economic security for yourself and your family.

## What will you name your fund?

- A fund may be named for you, a family member, after a cause, or in memory of someone special.
- If you prefer to be anonymous, you may choose a name that has a special meaning for you.
- Every grant from your fund will carry your fund's chosen name.

# Not ready for a fund?

## Purchase Charity Giving Cards.

Charity Giving Cards are a smart, easy and impactful way for everyone to participate in charitable giving and do good in the community.

Charity Giving Cards are similar to retail gift cards, but are instead redeemed to benefit any 501(c)(3) public charity in the United States. You can order Charity Giving Cards at [kernfoundation.org](http://kernfoundation.org) and give the card to celebrate a special occasion such as a birthday, holiday, or a job well done.

No more searching for the perfect gift, and you (the purchaser) receive the tax deduction. The person receiving the Charity Giving Card designates your gift to the charity of his or her choice by redeeming the gift card online at [kernfoundation.org](http://kernfoundation.org) or mailing the card directly to a nonprofit.



## Directly support Kern Community Foundation's work.

Make a contribution to one of our initiatives and improve our community.

### College Access

The Foundation's objectives in creating this initiative include:

- Distribute local scholarships in a coordinated effort to maximize efficiency.
- Attract funds from local donors to provide long-term funding for scholarships.
- Strengthen community alignment in college access goals through local stakeholder convening.
- Increase college attainment for Kern County students.



### Nonprofit Strengthening

The Foundation's objectives in creating this initiative include:

- Increase the visibility of local nonprofits through the Charity Giving Guide, YouTube channel (Kern Community Foundation Live!), and nonprofit speaker series (Philanthropy on Tap).
- Build the capacity of local nonprofits through competitive grant opportunities and a community-wide giving day (GIVE BIG KERN).
- Improve the sustainability of local nonprofits through endowment education and directly assist in creating endowment building and planned giving programs.

**LIVE!**



# Thank You to Our Donors

Robert C. and Doreen Boylan  
Abrams Fund

Aera Energy Fund

AFG Project Fund

Dr. Joseph E. Anderson  
Scholarship Fund

Arthritis Association of Kern  
County Fund

Arvin Union Congregational  
Church Scholarship Fund

Arvin Women's Club - Ellen  
Kovacevich Scholarship Fund

Arvin Women's Club Scholarship  
Fund

Bakersfield Aquatics Center Fund

Bakersfield Christian High School  
Endowment Fund

Donald E. and Audrey W. Barnes  
Charitable Fund

Donald and Earlene Barnes  
Charitable Fund

Kristen Barnes Charitable Fund

Batey Charitable Fund

Ben and Bryan Batey Charitable  
Fund

Jean Baughman Legacy Fund

Phyllis J. Bivins Memorial Fund

Boydston Family Charitable Fund

S & L Boyle Family Fund

Larry Carr Memorial Scholarship  
Fund

CCS Transition Scholarship Fund

Dolores & Victor Cerro St. Francis  
Scholarship Fund

Judith B. Chase Family Fund

Community Endowment Fund

Noel E. Daniells Permanent  
Endowment Fund

Jim & Nona Darling Family Fund

Curtis & Peggy Darling Funds

Richard & Lorraine Davies  
Charitable Fund

Dev Charitable Fund

Coe, Gorman, Diggles Foundation

Jeff and Denise Dittman  
Charitable Fund

Gee Durn Fund

ECR Fund

East Bakersfield High School  
Class of 1957 - Ron Robinson  
Memorial Scholarship Fund

Shirley Farnsworth Fund

Claude & Shirley Fiddler  
Charitable Fund

Foothill Foundation Endowment  
Fund

Fox Theater Foundation  
Endowment Fund

Golden Empire Gleaners  
Endowment Fund

Gordon Charitable Fund

Ed and Sue Green Family  
Charitable Fund

Merle Haggard Musical  
Scholarship Fund

Fred and Virginia Hamisch  
Charitable Fund

JLB Community Center Fund

George & Karen Johnson Family  
Fund

Juvenile Court Special Needs  
Fund for Foster Children

Kayli Memorial Fund

Duane and Corey Keathley  
Charitable Fund

Kern 178 Corridor Fund

Kern County Court Closure Relief  
Fund

Kern River Preserve Stewardship  
Endowment Fund

Kern River Valley Community  
Funds

Kern River Valley Educational and  
Cultural Foundation Fund

Kern Scholarship Foundation Fund

KRVHF Stewardship Endowment  
Fund

Justin and Carrie Leland  
Charitable Fund

Lightspeed Systems Foundation  
Fund

Linda Lopez Charitable Fund

Mayor of Bakersfield Scholarship  
Fund

Robert and Judith McCarthy  
Family Fund

Garrett and Elizabeth Ming  
Charitable Fund

David Moore Agricultural  
Scholarship Fund

David and Jan Nicholas  
Charitable Fund

Nickel Family Fund

Nickel Family Scholarship for  
Agricultural Education Fund

North Kern Christian School  
Endowment Fund

Palitz Family Charitable Fund

Phillips Family Fund

Dr. Richard P. Pierucci Scholarship  
Fund

Plank Family Charitable Fund

Prolific Talents Fund

Tom Pryor PTSD Awareness Fund

Oscar and Libbie Rudnick  
Scholarship Fund

Marjorie Rump Charitable  
Endowment Fund

Saint Paul's Episcopal Church  
Funds

Sanders Family Fund

Scoliosis Strong Fund

Shafter Historical Society  
Museum Curator Fund

Harriet L. Sheldon Fund

Sheldon Family Charitable Fund

Gayland P. & Joy A. Smith Family  
Fund

Sounds of Promise Continuing  
Education Fund for Orphans

Spotlight Theater Reserve Fund

SSRS Stewardship Endowment  
Fund

Charlotte and Max Steinert  
Family Fund

Marvin Steinert Family  
Charitable Fund

George and Helen Stewart  
Memorial Scholarship Fund

Rod Stiefvater Foundation Fund

Sandys S. Tang and Mora Tang  
Fund

Jack and Mary Lou Thomson  
Endowment Fund

Edward M. and Constance W.  
Tilbury Endowment Fund

Trang Family Charitable Fund

Upper Kern Fisheries  
Enhancement Fund

Eugene J. Voiland Charitable Fund

Blanche and Irma Weill  
Foundation Fund

Tim and Katie Werdel Giving Fund

Westminster Presbyterian  
Church Funds

Diane L. White Charitable Fund

Stan and Nancy Wilson  
Benevolence Fund

Helen Hawk Windes  
Charitable Fund

The Women's and Girls' Fund

Bryce & Florence York Fund



**KERN COMMUNITY**  
FOUNDATION

Growing community.  
Growing philanthropy.

3300 Truxtun Avenue, Suite 220, Bakersfield, CA 93301

Phone: 661-325-5346 / Fax: 661-325-5358

[kernfoundation.org](http://kernfoundation.org)



Confirmed in  
Compliance with  
National Standards  
for U.S. Community  
Foundations

