



COMMUNITY

Giving Guide



Turning Kern County's Generosity into Impact!

KERN COMMUNITY
FOUNDATION

Growing community.
Growing philanthropy.

KERN COMMUNITY FOUNDATION

... a 501(c)(3) public charity with a powerfully simple mission — Growing Community. Growing Philanthropy. We are known as a home for local philanthropists, a results-oriented grantmaker, and a trusted community leader.

... improving the quality of life in Kern County by increasing charitable giving, educating and connecting donors to community needs they care about, and taking the lead on critical community issues.

... transforming generosity into impact, making Kern County a better place to live, to work, and to visit — bringing together hundreds of donors to grant out millions of dollars to worthy causes since 1999.

Together we make our community a better place.

Give to the Foundation

Support one of our initiatives or our operations, thereby increasing our impact.



Give through the Foundation

Establish your own fund, have us work for you, and support the causes you care about.



→ Growing community. Growing philanthropy. ←

Use this guide to inspire your local giving!

WHAT IS A COMMUNITY FOUNDATION?

Community Foundations help build and strengthen communities and bring together people and organizations that want to make a difference. They are tax-exempt public charities that guide philanthropy and are dedicated to improving the quality of life in the areas they serve.

Adversity Inspires Our Doubling Down on Community Engagement

Traditionally, our *Community Giving Guide* is a biennial publication and our last Guide celebrated 20 years of Growing Community, Growing Philanthropy. Little did we know that the first year in our next 20-year trajectory would bring about the challenges we've witnessed as a result of the global COVID-19 pandemic. While we all work to navigate in uncharted waters, with no clear sense of how long the journey will last, Kern Community Foundation has doubled down on community engagement, processing record-level grant awards and engaging with diverse stakeholders to build a brighter future.

Within weeks of the pandemic lockdown, Kern Community Foundation mobilized nearly \$600,000 in emergency grantmaking from fundholders and local donors, to support local nonprofits and their community outreach efforts. We also surveyed the nonprofit sector to learn more about our partners' escalating needs. Survey findings helped us to develop a plan to continue assisting them to increase their visibility, capacity and sustainability, which have always been key components of our **Nonprofit Strengthening** initiative, and at this crucial moment, to also help them grow their resiliency – creating the power to bounce back in the face of adversity, embrace challenges and turn them into strengths.

Recognizing that linking our most vulnerable residents to vital social services leads to a healthier community, we have engaged with the **Kern Connected Community Network** and serve as the community convener. The Network is built around a powerful electronic referral tool designed to connect residents to a variety of social service providers while also creating operational efficiencies for network partners. In time, the Network will build a more efficient system of care and improve health outcomes for the entire community.

Our commitment to improving Kern's future continues through our **Educational Attainment** initiative – implementing an efficient scholarship awarding system and a comprehensive College Success Program to support students in their postsecondary journey, as well as the ongoing development of the Kern Education Pledge, a connected K-16 roadmap for academic success.

Finally, our community impact and thought leadership work spills over beyond the nonprofit sector and into a regional initiative to improve the quality of life for all in Kern County. We are partnering with a landscape of community stakeholders to develop a comprehensive inclusive economic development strategy – **A Better Bakersfield & Boundless Kern (B3KProsperity.org)** – that will prioritize job quality and access while fostering a more cohesive and connected civic infrastructure.

As you can see, the catastrophic impact to our community that we witnessed in 2020, has only strengthened our resolve to help chart a new course to improve Kern County's future.

How You Can Help

This edition of the *Community Giving Guide*, our largest yet, is a directory of more than 300 dedicated Kern County nonprofit organizations. Use it to learn more about the many ways these organizations enrich our community and think about how you might do more to lift up this wonderful place we call home.

Through our non-endowed funds, we help local donors to give now and help meet immediate needs, and through our endowed funds we ensure that they can give forever, providing long-term philanthropic solutions to ongoing local challenges.

I invite you to partner with Kern Community Foundation and consider opening a fund to manage your charitable giving while improving the community. It's easier than you think:

- Individuals, families and even corporations can establish funds.
- Contributions to your fund are immediately tax deductible and can come from a variety of sources: Cash, stocks and bonds, retirement assets, appreciated real estate and even crops can be used to establish a fund.
- You can have Kern Community Foundation professionally manage your funds or select your own trusted advisor.
- We charge a minimal annual fee, based upon your fund's average balance, to support our work in the community – keeping your investment local.

Look through this Giving Guide and find your passion. We need you. Growing Community and Growing Philanthropy is not possible without your support. Thank you.



Kristen Beall Watson, Ed.D.
Kern Community Foundation
President and CEO

Kern Community Foundation Board of Directors

Kristen Beall Watson
David Denison
Kevin Findley
Joe Gregory

Jeffrey Gutierrez
John Hershey III
Justin Leland
Carlos Sanchez

Stephen Sanders
Kate Tandy
Martha Terrazas
Diane White

Arts and Culture

Bakersfield Art Association

To provide opportunity for study and improvement of art technique, encourage art in community, offer art scholarships, and exhibit members' art locally.

bakersfieldartassociation.org

Bakersfield City Ballet

To inspire and enrich our community with performances, and foster a love for the arts in youth through dance.

bakersfieldcityballet.org

Bakersfield Community Theatre

To produce a series of plays annually for the cultural enrichment of the community.

bctstage.org

Bakersfield Firefighters Historical Society

To restore, preserve and share the valuable history and timeless artifacts of the Bakersfield Fire Department and create a fire- and emergency-safe community.

bfdhistory.com

Bakersfield Jazz Workshop

To promote Jazz education and performance throughout Kern County in a supportive environment.

bakersfieldjazzworkshop.com

Bakersfield Master Chorale

To provide a venue in Kern County for the appreciation and awareness of choral music and choral arts education.

bakersfieldmasterchorale.org

Bakersfield Museum of Art (BMOA)

To inspire and engage diverse audiences by providing creative visual art experiences through exhibition, education, community outreach and special events.

bmoa.org

Bakersfield Music Theatre & Stars Theatre Restaurant

To produce quality musical theatre and theatre education in Kern County.

bmtstars.com

Bakersfield Symphony Orchestra

To enrich our community through the power of music.

bsnow.org

Center of the World Festival, Inc.

Developing an interdependent and ecologically sensitive community through social theater of creative arts.

cowfest.org

Desert Community Orchestra

To present symphonic concerts and support music education and community activities, including youth performances and college scholarships.

desertcommunityorchestra.weebly.com

Downtown Bakersfield Development Corporation (DBDC)

Inspiring community leaders to unite community resources to develop Bakersfield's Downtown as a pre-eminent California community.

bakersfelddbdc.com

Juventud Enriquecimiento Musica Y Artes Foundation

To support the cultural enrichment of youth in the Central Valley of California by encouraging philanthropy and supporting programs for youth.

jemafoundation.org

KAXL 88.3 Life FM

Using Christian music and compelling media in a culturally relevant way to encourage faith and unite our community.

883lifefm.com

Kern County Museum Foundation

Celebrating the culture and history of Kern County.

kerncountymuseum.org

Kern County Scottish Society

To promote and preserve Scottish heritage and culture in Kern County.

kernscot.org



Kern Dance Alliance (KDA)

Advocating for, promoting and supporting dance and the arts in Kern County.

kerndance.org



Kern River Tubatulabal Paiute Council

Dedicated to preserving, restoring, and teaching Native American culture, history and traditions for educational, ceremonial and social activities.

nuuicunni.com

Make a difference



Bakersfield Museum of Art — \$75 provides five children with art supplies and a one-hour virtual art lesson; and \$125 allows one elementary school class to take a one-hour virtual docent tour of the museum.



The Arts Council of Kern — \$100 pays for a guitar, and \$200 pays for a keyboard, for a local veteran enrolled in the Arts Council's "Veterans in the Arts" Program.



White Wolf Wellness Foundation — \$150 provides a child with free access to a three-day arts and yoga camp.



Kern Dance Alliance — \$200/\$400/\$600 helps KDA pay for one, two, or three months of Zoom at a time when all dance classes, including important offerings such as Math & Dance and Dance & Disability classes, plus KDA Board Meetings, must be held on this online platform.



Kern River Tubatulabal Paiute Council — \$1,000 helps with the purchase of materials to paint the exterior of the Nuui Cunni Native American Intertribal Cultural Center.



Kern River Valley Art Association

To provide opportunities, resources and exhibition venues for Kern River Valley artists, with an emphasis on art education and emerging artists.

krvaa.org

Kern River Valley Historical Society

To preserve and communicate the history of the Kern River Valley and the surrounding Southern Sierra communities.

kernvalleymuseum.org

Kern Valley Chorus

(Sweet Adelines International)

Committed to advancing the musical art form of barbershop harmony through opportunities in education, performance and competition.

kernvalleychorus.org

Maturango Museum of Indian Wells Valley

To preserve, interpret and develop an appreciation for the natural and cultural history of the Northern Mojave Desert.

maturango.org

Petroglyph Education Foundation, Inc.

To raise public awareness about the significance of Native American history, culture and Rock Art, and the importance of protecting these Native American contributions.

rpfestival.com

Ridgecrest Chamber Music Society

To promote education and awareness of chamber music and provide community members with a high quality musical experience.

rchambermusic.org

Shafter Historical Society (Shafter Depot Museum)

To research and publish local history and to collect and exhibit artifacts relating to the history of Shafter.

shafterdepotmuseum.org

The Arts Council of Kern

To provide support, and promote arts access, advocacy, and education for all Kern County residents and visitors.

kernarts.org

The Fox Theater Foundation

Enhancing the quality of life in Kern County through the effective operation of the Historic Fox Theater as a premier cultural and community event center.

thebakersfieldfox.com

The Green Hotel

Restoration Foundation

To preserve the Hotel and 130+ year-old historic oak on the property as part of Shafter and Kern history, and provide access to the community.

thegreenhotel.org

The Hub of Bakersfield

Committed to redefining and revitalizing Bakersfield, California's urban core.

thehubofbakersfield.org

Valley Public Radio

Expanding your world through voices and sounds that inform and inspire.

kvpr.org

White Wolf Wellness Foundation

Enhancing community wellness, arts, mindfulness and culture through compassion, access and expertise.

whitewolfwellness.org



The benefits of registering with Kern Community Foundation

Kern Community Foundation's Nonprofit Strengthening Initiative begins with us holding the agencies listed in our *Community Giving Guide* to high standards of transparency and accountability. This involves:

- Registering with Kern Community Foundation through our online registration and grants platform, and
- Achieving a transparency rating of Silver or higher on GuideStar.org by Candid, the world's largest online database on nonprofits that many potential donors and grantors turn to when considering supporting a 501(c)(3) corporation.
- In addition to being listed in the *Community Giving Guide* and its interactive online companion, the Nonprofit Search engine on our website, kernfoundation.org, registered agencies are also eligible to apply for Foundation grants and enjoy our wide range of programs and services showcased in the pages that follow.
- Nonprofit Strengthening happens as we empower our partners with the increased Visibility, Capacity and Sustainability that allows them to thrive.
- This *Guide* includes descriptions of nonprofits serving Kern County, along with their web address, so that potential donors, volunteers and advocates can engage with any one of them. Agencies are organized in five categories:

- Arts and Culture
- Education and Youth Development
- Environment and Animals
- Health
- Human Services and Community Benefit

Get to know Kern County's diverse nonprofit community and find your passion!

Education and Youth Development



African American Network of Kern County

Through unity, promote responsible and meaningful programs to educate, create economic parity and job opportunities, and produce positive role models.

aankc.org

African Children's Schools

Building schools for rural children in Africa in areas where there is no public education available.

africanchildrensschools.org

American Youth Soccer Organization (AYSO) Region 181

Developing and delivering quality soccer programs, promoting a fun family environment based on these philosophies: Everyone Plays; Balanced Teams; Open Registration; Positive Coaching; Good Sportmanship.

ayso181.org

Athletes' Advantage Academy

Dedicated to the radical optimization of human health, physical fitness, and athletic performance.

a3bakersfield.com

Bags4Kids

To be a voice for foster youth whose inner struggles go unheard, thereby restoring their capacity to believe they have not been forgotten.

bags4kids.org

Bakersfield City School District Education Foundation

Partnering with the community to provide resources that directly impact the lives of children through innovative educational programs.

bcsd.com

Bakersfield College Foundation

Expanding educational access and opportunity for students of all ages.

supportbc.org

Bakersfield High School Endowment Fund

To support the arts, athletics, activities and clubs at BHS, in pursuit of a full and enriching academic experience for every student.

bakersfield.kernhigh.org

Bakersfield Ivy Legacy Foundation

To collaborate with local agencies to secure and manage resources for educational, leadership and philanthropic programs of Alpha Kappa Alpha Sorority Bakersfield.

bakersfieldivylegacy.org

Bakersfield North Rotary Foundation

To act as the charitable arm of Bakersfield North Rotary Club to support charities in the Greater Bakersfield area, particularly those serving children and youth.

bakersfieldnorthrotary.org

Bakersfield Parent Nursery

To encourage and promote education through parent, child and family involvement in our school and community.

bakersfieldparentnursery.com

Bakersfield Play Center

Since 1952, focusing on enhancing the development of the whole child.

bakersfieldplaycenter.com

Bakersfield Police Activities League

Guiding at-risk youth through quality educational and athletic after-school programs to healthy alternatives to drugs, alcohol, gangs, and violence.

bakersfieldpal.org

Bakersfield Power Travel Softball Team

To prepare girls to learn and play the game of softball in a fun, safe, healthy environment, emphasizing the importance of respect.

[facebook.com/pages > Bakersfield Power](https://facebook.com/pages/BakersfieldPower)

Bakersfield Sister City Project Corp.

To promote peace and global awareness through cultural and social interaction with citizens of Bakersfield's Sister Cities around the world.

bakersfieldsistercity.org

Bakersfield Women's Business Conference – R.O.S.E. (Realizing Options for Student Excellence) Mentor Program

To help mentored students recognize their value and self-worth, and provide them with an opportunity to attend the Bakersfield Women's Business Conference.

bakersfieldwomen.org

Best Buddies International

Establishing a global volunteer movement that creates opportunities for friendship, leadership and employment for people with intellectual and developmental disabilities.

bestbuddies.org

Boy Scouts of America

Southern Sierra Council

To prepare young people to make ethical and moral choices over their lifetimes by instilling in them the values of the Scout Oath and Law.

sscbasa.org

Boys & Girls Clubs of Kern County

To enable all young people, especially those who need us most, to reach their full potential as productive, caring, responsible citizens.

bgclubsofkerncounty.org



Buena Vista Museum of Natural History & Science

To educate, engage, and inspire our community to explore the wonders of science through enrichment activities, exhibits and special programs.

buenavistamuseum.org



California Recreation Foundation

Furthering California community development and good citizenship through recreation.

onespadeyouthpackers.org

Camp KEEP Foundation

To promote and support Camp KEEP (Kern Environmental Education Program) through various fundraising efforts.

campkeep.org

Center for Land-Based Learning

To inspire, educate and cultivate future generations of farmers, agricultural leaders, and natural resource stewards.

landbasedlearning.org

Cerro Coso Community College Foundation

To support access, success, and excellence for students, faculty, and staff at Cerro Coso Community College.

cerrococo.edu/foundation

Child Guidance Guild of Bakersfield (Guild House Restaurant)

To provide resources to help children with emotional and behavior problems.

guildhousebakersfield.com

Children To Love International

To provide hope for suffering children in the name of Jesus, focusing our efforts on education, spiritual teaching, economic support, physical assistance, and social intervention.

childrentolove.org

China Lake Museum Foundation

To operate the China Lake Museum and educate visitors about air armament technology development at Naval Air Warfare Center China Lake, and provide STEM education.

chinalakemuseum.org

Christian Youth Film Society

To equip and encourage young people to create excellent visual stories of faith, hope, and love.

christianyouthfilmfestival.org

CSUB Auxiliary for Sponsored Programs Administration

Administering externally sponsored programs and research projects on behalf of the University for the charitable and educational benefit of students, faculty, staff, and alumni.

csub.edu/grasp

CSUB Foundation

To advance California State University, Bakersfield by creating strong and lasting relationships that enrich the student experience and promote excellence in education.

csub.edu/foundation

Driller To Driller Foundation

Rewarding students by providing scholarships to those who are overlooked by traditional programs and are limited by their financial status.

drillertodrillerfoundation.org

Farmer Veteran Coalition

To mobilize veterans to feed America by supporting, through education and training, those veterans engaged in or pursuing opportunities in the agricultural industry.

farmvetco.org

Friends of Kern County Library

Supporting the programs, priorities and activities of all branches of the Kern County Library.

kerncountylibrary.org



We don't just help students get into college, we help them get through college!

Building a better Kern County must involve preparing students to become future leaders in business, education and government. Growing the number of students who earn college degrees and vocational certificates, and go on to obtain well-paying jobs, helps ensure such a vibrant future.

But here's the challenge we're facing: At close to 21%, Kern County's poverty rate reaches nearly 9 percentage points higher than California's 12% rate, and almost twice the national poverty rate of close to 11%. Additionally, just 74% of Kern County residents 25 and older have completed high school or beyond, and only 16% have a bachelor's degree or higher level of education, compared to 83% and 33% of California residents, respectively.

Since 2015, we have seen that while many local students have the ability and desire to succeed in college, they often lack the financial resources and access to guidance that can support their high-school-to-college-to-career transition. More than four out of five students receiving scholarship awards from Kern Community Foundation are the first in their family to attend college; many of them cannot turn to parents or older siblings for college advice.

Through a single online application process, our **Kern Futures Program** provides needs-based scholarships to youths graduating from Kern County high schools and helps them navigate the complicated road to higher education so they can persist through the attainment of their desired degree or certificate.

We invite educational institutions, private and corporate donors and all interested community members to join us in changing the future of Kern County by improving the educational outcomes of our youth.

Visit kernfoundation.org/students for more information.

Education and Youth Development

Girl Scouts of Central California South

To build girls of courage, confidence, and character who make the world a better place.

girlscoutscs.org

Golden Empire

Youth Tackle Football & Cheer

To provide a competitive youth tackle football program as well as a Sideline youth cheer program for elementary and junior high school students.

geyf.org

Good Samaritots

Fostering compassion and social responsibility via community service projects geared toward tots.

goodsamaritots.org

Guardians Around the Earth (G.A.T.E.)

Providing education and enrichment for those committed to the continued health and healing of our environment, community and/or family life.

guardiansaroundtheearth.org

Heritage Oak School

To educate, promote, establish, and equip Tehachapi students in the classical approach to education in light of a Christian world view.

heritageoakschool.info

Inspiring Adolescence, Inc.

Cultivating a dynasty of leaders.

Jakara Movement

Seeking to create a new generation of Sikh leadership in California through individual development and community building.

jakara.org



Kern Community Tennis Association

To provide equipment necessary for student athletes to access the physical and social benefits earned by being a part of their school's athletic program.

kerntennis.org

Kern County 4-H Clubs

Engaging youth in reaching their fullest potential while advancing the field of youth development.

cekern.ucanr.edu

Kern County Historical Society

A countywide membership organization founded in 1931, for persons interested in Kern County history.

kernhistoricalsociety.org

Kern County Network for Children

To protect and enrich the lives of Kern County children.

kcnc.org



Kern County Sheriff's Mounted Posse

Benefiting physically and mentally challenged children in Kern County.

kcs-mp.com

Kern County Superintendent of Schools Educational Services Foundation

To provide educational services throughout Kern County.

kern.org

Kern County Taxpayers

Education Fund

To research, organize and disseminate information and education to the public and business community of Kern County.

kernleadersacademy.org



Make a difference



Atheletes' Advantage Academy

— \$50 pays for one student-athlete starter kit.



Cerro Coso Community College Foundation

— \$150/\$300/\$450 provides a student with tuition for two, three or four classes.



STEMTaught Foundation

— \$300 provides 25 low-income students without internet a fun "STEM at Home" backpack kit with standard aligned science books, tangram puzzles, experiment kits and more to stay excited about learning.



OTD (Order of the Dragon) Self-Defense Foundation

— \$350 sponsors class fees and a uniform for a child for one year.



MCSC Kern Women's Business Center

— \$1,000 helps 25 clients with business consultations.

Jim Burke Education Foundation

Helping the youth of Kern County excel through grants, scholarships and civic projects developed through the Ford Dream Builders student leadership program.

jimburkeeducationfoundation.org

Kegley Institute of Ethics

To inspire our community to recognize the value of thinking about and engaging in ethics.

csub.edu/kie

Kern Athletic Fencing Foundation

Implementing "Smart Fencing" to support students by improving their academic, social, and physical wellbeing through sport participation, health education and academic tutoring.

kernaff.org

Kern Bridges Youth Homes

Committed to providing for the physical, emotional, social, and mental health needs of abused and neglected children.

kernbridges.com



Kern County Wrestling Association
Providing support for wrestlers in Kern County from 5 years old to college age.
facebook.com/kcwawrestling

Kern Economic Development Foundation
Linking business, education, and the community on projects related to STEM education, the local workforce, and professional development.
kedf.org

Kern Literacy Council
Empowering individuals to improve their quality of life through literacy education since 1966.
kernliteracy.org

Kern Partnership for Children and Families
Seeking to meet the needs of low-income and foster children in Kern County.
kernpartnership.com

Latina Leaders of Kern County
To foster leadership, to identify and develop opportunities for Latinas, and to influence key issues affecting our community.
kernlatinas.org



League of Dreams, Inc.
To give every child a chance to play by providing sporting opportunities to children with physical and developmental disabilities.
ourleagueofdreams.com

Legacy Family Services
To unlock the potential of families and individuals, develop employees that model integrity and healthy living, and build a legacy for our clients.
legacyfamilyservices.com

Lightwave Education
To create tools for individuals to thrive, prosper, and succeed through education, mentoring, and community outreach.
lightwaveeducation.org

Matrix Entrepreneur Academy (of Innovative Entrepreneur Education)
To produce business-minded, community conscious individuals who are contributing citizens.
matrixentrepreneuracademy.org

OTD (Order of the Dragon) Self-Defense Foundation
To offer low-cost self-defense classes to children, with an emphasis on discipline and respect, and to help them become better citizens.
orderofthedragon.com

Parent Institute for Quality Education (PIQE)
To provide families with the knowledge and skills to partner with schools and communities to ensure their children achieve their full potential.
piqe.org

R.M. Pyles Boys Camp
To provide at-risk boys with the opportunity to attend a camp that promotes character development, positive male mentoring and education.
pylescampa.org

South Kern Sol
Elevating youth's voice for health and racial equity through Kern County's nonprofit, non-partisan youth-led newsroom.
southkernsol.org



Give Big Kern

Every year since 2016, our entire community has come together on the first Tuesday in May to observe **Give Big Kern**, "One day to celebrate the giving spirit of Kern County!"

Hosted by Kern Community Foundation, Give Big Kern is an online crowdfunding event that allows nonprofits to raise unrestricted dollars and sign up volunteers willing to donate their time and talents. It is a FREE gift from the Foundation to our nonprofit partners.

Since its launch, Give Big Kern has raised more than \$1.7 million and procured close to 385,000 pledged volunteer hours from thousands of community members for hard-working local charities.

Give Big Kern allows each participating nonprofit to appeal to donors and volunteers through its own customizable page on givebigkern.org, as well as on social media, applying the many online fundraising skills learned at our trainings, and using the marketing materials we provide free of charge.

Thanks to our sponsors' generous support, participating agencies get to compete for prizes for the most dollars raised, most volunteer hours pledged, 100% board member participation, the donation from the farthest away, and more!

Because it is an online, social-distancing-safe fundraising effort, during the COVID-19 pandemic of 2020, Give Big Kern became a great source of support for 125 participating nonprofits, many of which had lost revenue from canceled event-based fundraisers.

Give Big Kern is the 2019 and 2020 winner of the Greater Bakersfield Chamber's **Beautiful Bakersfield Award** for helping to make "A Better Bakersfield."

Join us each year on the first Tuesday in May, as Give Big Kern Mascot Billy the Give Big Goat leads the way to online giving with his playful battle cry, "Give B-i-i-i-g!"

Our Commitment to Education



Kern Community Foundation embraces **Kern's Educational Attainment** as one of our core Strategic Initiatives.

This emphasis is rooted in the belief that education:

- Must begin early and reach beyond high school;
- Is a prerequisite to success in a knowledge-based economy;
- Is for everyone; and
- Is a public good.

To this end, we adopted a three-fold strategy to ensure long-term, impactful results.

First, thanks to our generous donors, we have cultivated a robust portfolio of accessible scholarship funds totaling more than \$3 million. Many of these funds are permanently endowed and will go on granting scholarships to Kern students for generations to come.

Since 2015, the lives of 1,100 students have been positively impacted by the generosity of our scholarship fundholders and donors.

Next, we developed a comprehensive **College Success Program** to provide guidance and support to our award recipients. For us at Kern Community Foundation, scholarship giving is not just about getting students to college. We view scholarships as investments in Kern students' futures and, more than anything, we want every one of our supported students to complete college, university, or even vocational school and successfully enter the workforce.

Finally, we have partnered with the Kern County Superintendent of Schools to convene education and community leaders, connecting existing efforts to build greater momentum and opportunities for success while also identifying a common agenda for improving student outcomes. The result has been the **Kern Education Pledge** – a county-wide collective impact model linking together school districts and higher education institutions.

The trajectory for increasing educational attainment is promising, but clearly there is much more work to do. With your help, Kern Community Foundation is committed to



continue investing in education to improve the quality of life in Kern County. Together we can increase access to educational opportunities and lighten the burden for Kern County students determined to succeed. Talk to us about our scholarship funds.

Find your passion in education and help us improve students' lives. Write to us at info@kernfoundation.org or call 661.325.5346.



Southwest Community Nursery School

A nonprofit parent co-operative that emphasizes the learn-through-play experience.

southwestcommunitynurseryschool.com

STEMtaught Foundation

To create a more vibrant, innovative future for underprivileged youth by providing schools with STEM supplies, curriculum and training.

stemtaughtfoundation.org

Taft College Foundation

Dedicated to supporting student success through fundraising and the development of community relationships.

taftcollege.edu/foundation

The Contreras Foundation

To promote family unity through public fundraising events for Kern County education and community benefit.

thecontrerasfoundation.com

There is Hope for Me, Inc.

Providing Healing, Opportunity, Purpose and Empowerment (HOPE) through a survivors-to-survivors ministry that helps those affected by human trafficking and abuse.

thereishopeforme.org

Transitional Youth Mobilizing for Change (TYM4Change)

To empower youth to realize their potential and become assets to their community through learning, research, and action.

tym4change.org

University of La Verne

Offering a distinctive and relevant educational experience to a diverse population of learners, preparing them for successful careers and lifelong learning.

laverne.edu

Valley PBS

Enriching, educating and strengthening the diverse communities of the San Joaquin Valley through the power of public service media.

valleypbs.org

Villagers, Inc.

Providing a safe haven where inner-city youth are empowered to exercise leadership skills in their communities, and succeed in their personal lives.

facebook.com/VillagersInc

**Westchester Kiwanis Foundation**

Providing services to benefit underprivileged children and veterans in Kern County.

westchesterkiwanis.org

Wonder Window Children's Center at Lutheran Church of Prayer

A Christian educational program providing preschool and after-school students with essential developmental, social and educational opportunities.

lcp.org

Word for Word Ministries, Inc.

Helping students memorize the Bible "in context," with the LISTEN-SING-READ-WRITE-RECITE method for private and home schools.

biblesong.com

Writers of Kern

Mentoring and encouraging writers of all ages and genres, assisting them in reaching their writing goals while building a community of writers.

writersofkern.com

**Youth 2 Leaders Education Foundation**

To unlock the power of higher education.

y2lef.org

Youth Connection, Inc.

To prevent at-risk youth from entering the Juvenile Justice System by connecting them to a positive structure program.

facebook.com/kernyouthconnection

Youth for Christ of Kern County

Meeting the needs of young people physically, mentally, socially, and spiritually throughout Kern County.

yfckern.org

Youth Leadership Incubator Inc. (Hack+)

Helping students to launch community impact nonprofit projects and events.

hackplus.io

**YWRAP (Young Women Reaching Accomplishable Places)**

To improve the overall quality of life of girls 10 to 18 by addressing their social, emotional, mental, and environmental needs.

ywrap.org



PHILANTHROPY

ON TAP

At Kern Community Foundation, we believe Kern County's hard-working nonprofits deserve a toast—and we lift our glasses to them at **Philanthropy on Tap!**

Through a competitive application process, this "Visibility Grant" program allows nonprofits registered with the Foundation to be featured as guest speakers before a live audience at a business networking event.

Thanks to a partnership with the Greater Bakersfield Chamber of Commerce, Imbibe Wine & Spirits Merchant and Temblor Brewing Co., we traditionally showcase a different community-based organization every other month in an informal setting, over drinks and hors d'oeuvres—on us! Hence the name, Philanthropy on Tap. Each event provides an opportunity for nonprofits to forge strategic networking connections with for-profit peers.

In 2020, following important public health directives, we suspended this Nonprofit Showcase Series beginning in March to comply with social distancing and group gathering requirements designed to prevent community spread of the Coronavirus. We look forward to the day when we can once again gather to introduce members of Kern's hard-working nonprofit community to audiences of local business leaders and other community members.

Lots of opportunities to engage with local nonprofits through giving, volunteering and advocacy await at Philanthropy on Tap. *Please visit kernfoundation.org > About > Events for more information.*

Environment and Animals



All Seated in A Barn

Rescuing and rehabilitating horses and donkeys that would otherwise be shipped across the border to be slaughtered for human consumption.

allseatedinabarn.com

Almost Eden Rescue

Saving at-risk domestic animals and promoting spay/neuter, vaccination, and microchipping.

almostedenrescue.com

Alpha Canine Sanctuary

Providing a no-kill haven for abused, abandoned and disabled dogs through programs of rescue, care of life, adoption and spay/neuter assistance.

alphacanines.org

Bakersfield Pet Food Pantry

Helping our community by providing temporary assistance of emergency pet food to families suffering financial hardships, low income seniors, disabled persons, and homeless individuals.

bakersfieldpetfoodpantry.org

Bakersfield SPCA

Advocating for the general welfare and humane treatment of animals through shelter, prevention of pet overpopulation and adoption.

bakersfieldspca.org

Buster's Pet Fund

Providing medical attention and rescue to sick and injured Kern County animals, especially those in rural communities.

busterspetfund.org

California City Animal Outreach Foundation

Supporting the California City Animal Shelter and community companion animals, and promoting extended rescue and adoption, spay/neuter and educational awareness.

calcityaof.wixsite.com/ccao

California Living Museum Foundation (CALM)

To act for the benefit of the California Living Museum, which displays native California animals and plants for education, conservation and research.

calmzoo.org

California Trout

Working to ensure that resilient wild fish thrive in healthy waters for a better California.

caltrout.org

Consulting and Rescuing Equine (CARE), LLC

To provide a safe haven for equine and companion animals, and to help owners keep their animals for life by providing financial assistance.

consultingandrescuingequine.com

Critters Without Litters

Helping pets and pet owners with low-cost spay/neuter services, as we seek to end the preventable euthanasia of adoptable pets in Kern County.

critterswithoutlitters.org

Equine Rescue Outakuntrol

To rescue abandoned, abused, starving and slaughter-bound horses, and to provide life-saving medical care and rehabilitation for adoption.

equinerescueoutakuntrol.com

Friends of the Kern County Animal Shelters Foundation

Dedicated to the overall safety and wellbeing of all animals, and to providing valuable resources for the rescue of homeless cats and dogs in Kern County.

friendsofkernshelters.org

H.A.L.T. (Helping Animals Live Tomorrow) Rescue

Rescuing homeless dogs and cats and finding them the loving homes they deserve.

haltrescue.org



Have a Heart Humane Society

Providing rescue and low-cost vaccination and spay/neuter because cats and dogs enrich and heal our lives and deserve a caring home.

haveahearthumanesociety.org

High Sierra Wild Horse Sanctuary & Gentling Center

Providing a safe haven for wild-born mustangs, burros and domestic equines who have lost their homes.

hswhs.org

Keep California Beautiful

Dedicated to alternative waste management, beautification, community networking and outreach.

keepcabeautiful.org

Keepers of the Kern

Dedicated to restoring, protecting, and preserving the quality and uniqueness of the Wild and Scenic Kern River.

keepersofthekern.org

Make a difference



All Seated in a Barn — \$75 covers a vet exam and vaccinations for one equine.



Tree Foundation of Kern — \$125 to \$200 plants a tree to help beautify our community and clean our air.



Kern Audobon Society — \$150 covers transportation/evaluation costs for members to visit critical habitat, research stations, and potential public field trip areas in Kern County.



Socks & Paws Animal Rescue — \$500 ensures approximately two months of medical care for a chronically ill dog that requires frequent veterinary visits, and a special regimen of meds and/or food.



Strength of Shadow Dog Rescue, Inc. — \$2,300 pays for one full-day spay/neuter clinic where approximately 25 dogs can be fixed.



Kern Audubon Society

To educate all age groups about the importance of birds and wildlife through outreach, field trips and citizen science.

kernaudubonsociety.org

Kern Green

Providing education and awareness to demonstrate the social, economic and environmental benefits of integrating green practices.

kerngreen.org

Kern River Conservancy

To implement educational initiatives focused on watershed conservation, responsible public land use, native trout preservation and community outreach.

kernriverconservancy.org

Kern River Valley Heritage Foundation

Protecting the natural, scenic, agricultural and historic lands of the Kern River Valley through stewardship, restoration and education.

krvhf.org

Lifesavers, Inc.

Dedicated to saving wild and domestic horses from abuse, neglect and slaughter, and providing healing programs to the public.

wildhorserescue.org

Marley's Mutts Dog Rescue

To rescue, rehabilitate and re-home discarded or abused and forgotten animals.

marleymutts.org

Meow Co.

To save abandoned cats and kittens from euthanasia, and find them loving homes.

meowco.org

Pacific Waterfowl Rescue

Rescuing, rehabilitating, and re-homing domestic ducks and geese, and educating the public about the dangers of releasing them into public areas.

pacificwaterfowlrescue.org

Plumas Corporation

To promote the benefits of good land stewardship through education and restoration activities that result in healthy forests, resilient watersheds, and prosperous communities.

plumascorporation.org

Project Clean Air

To enhance the community by improving air quality through education and collective action.

projectcleanair.us

Quail Springs Permaculture

Empowering youth and adults of all backgrounds with the knowledge, inspiration and skills essential to social and ecological health.

quailsprings.org

Redemption Ranch

Providing service/therapy Pit Bull type dogs and equine therapy to trauma survivors, both in and out of uniform.

facebook.com/redemptionranchca

Sand Creek Rescue

Primarily rescuing and giving hope to horses that are the most difficult to place: pregnant mares, mares with foals and stallions.

sandcreekrescue.org

Sequoia ForestKeeper

To protect and restore the ecosystems of the southern Sierra Nevada – including both the Sequoia National Forest and the Giant Sequoia.

sequoiaforestkeeper.org

Sequoia Riverlands Trust

To inspire love and lasting protection for important lands.

sequoiariverlands.org

Socks & Paws Animal Rescue

Serving the Indian Wells Valley and surrounding communities through foster-based housing, rehabilitation, training, veterinary care and placement of animals in forever homes.

facebook.com/SocksandPawsAnimalRescue



Southern Sierra Research Station

To promote, facilitate, and disseminate biological research that informs conservation decisions and environmental policy.

southernsierraresearch.org

Stewards of the Sequoia

Promoting responsible recreation and environmental stewardship.

stewardsofthesequoia.org

Strength of Shadow Dog Rescue, Inc.

Believing that "Dogs are medicine," our goal is rescuing dogs and saving people at the same time.

strengthofshadow.org

Tejon Ranch Conservancy

Protecting, enhancing and restoring the native biodiversity and ecosystem values of Tejon Ranch and Tehachapi Range to benefit future generations.

tejonconservancy.org

The Cat People

To end the needless suffering of felines in Kern County through rescue, rehabilitation, adoption, community education, and low-income assistance programs.

thecatpeople.org

The Earth Organization

Science-based, we work to find and implement rational solutions that recreate a healthy, thriving planet for all life.

theearthorganization.org

The Wildlands Conservancy's

Wind Wolves Preserve

To preserve the beauty and biodiversity of the earth and to provide programs so that children may know the wonder and joy of nature.

wildlandsconservancy.org



Tree Foundation of Kern

To inspire people to enhance their neighborhoods by planting and properly caring for trees.

urbanforest.org

Trout Unlimited

To conserve, protect and restore North America's coldwater fisheries and their watersheds.

tu.org

Whiskers, Paws, Hooves and Claws

Animal Advocacy

Dedicated to horse rescue and rehabilitation, specializing in livestock and equine fostering, emergency response, and community service.

hooves-paws.org

Wits' End

To serve the Pacific Crest Trail through hikers and the community by coordinating needed services with local volunteer providers.

witsendpct.com

Drought.
Wildfires.
Earthquakes.

A statewide crisis of housing affordability with waves of accompanying homelessness.

The Coronavirus pandemic.

In the last few years, California and Kern have experienced multiple crises, the last of which, COVID-19, has in one way or another impacted the life of every state resident.

Each time there is a crisis, local charities are called upon to respond to overwhelming community needs, oftentimes with diminished resources. But how can the nonprofit sector—which not only provides a safety net for the neediest, but is also the creator of one out of every 14 local jobs—remain sustainable in the face of increasing demands while its financial health is threatened?

Resiliency is defined as the capacity to recover quickly from difficulties; the ability to spring back into shape; toughness.

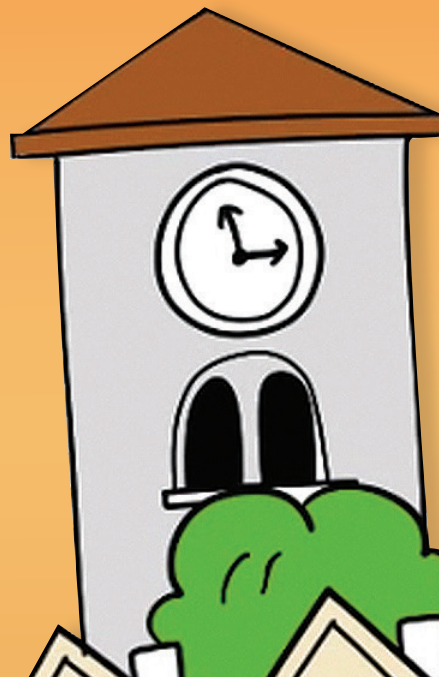
Preparedness means a state of readiness; having a concrete research-based set of actions that are taken as precautionary measures in the face of disasters.

Through its Nonprofit Strengthening Initiative, and armed with important lessons learned from every recent crisis in which it has intervened as a philanthropic first responder,

Kern Community Foundation is well poised to instill resiliency and preparedness among its nonprofit partners—because the next crisis is just a matter of time.

Thanks to financial support from private and public funders and guidance from our peers in philanthropy, our service offering now includes:

- An open-ended virtual training series called “Growing Resiliency” to help Kern County’s nonprofits build skills in grant searches and grant writing, online fundraising, donor and board member engagement and cultivation, finding capital access tools and nontraditional financial resources, and more;
- An “Online Center for Nonprofit Resiliency and Sustainability” housed on our website, kernfoundation.org, that includes COVID-19 resources, virtual live workshops



GROWING

as well as self-paced online learning opportunities, grant announcements, access to Candid's Foundation Directory Online, and facilitated virtual roundtables to help leaders in the local nonprofit sector learn from one another;

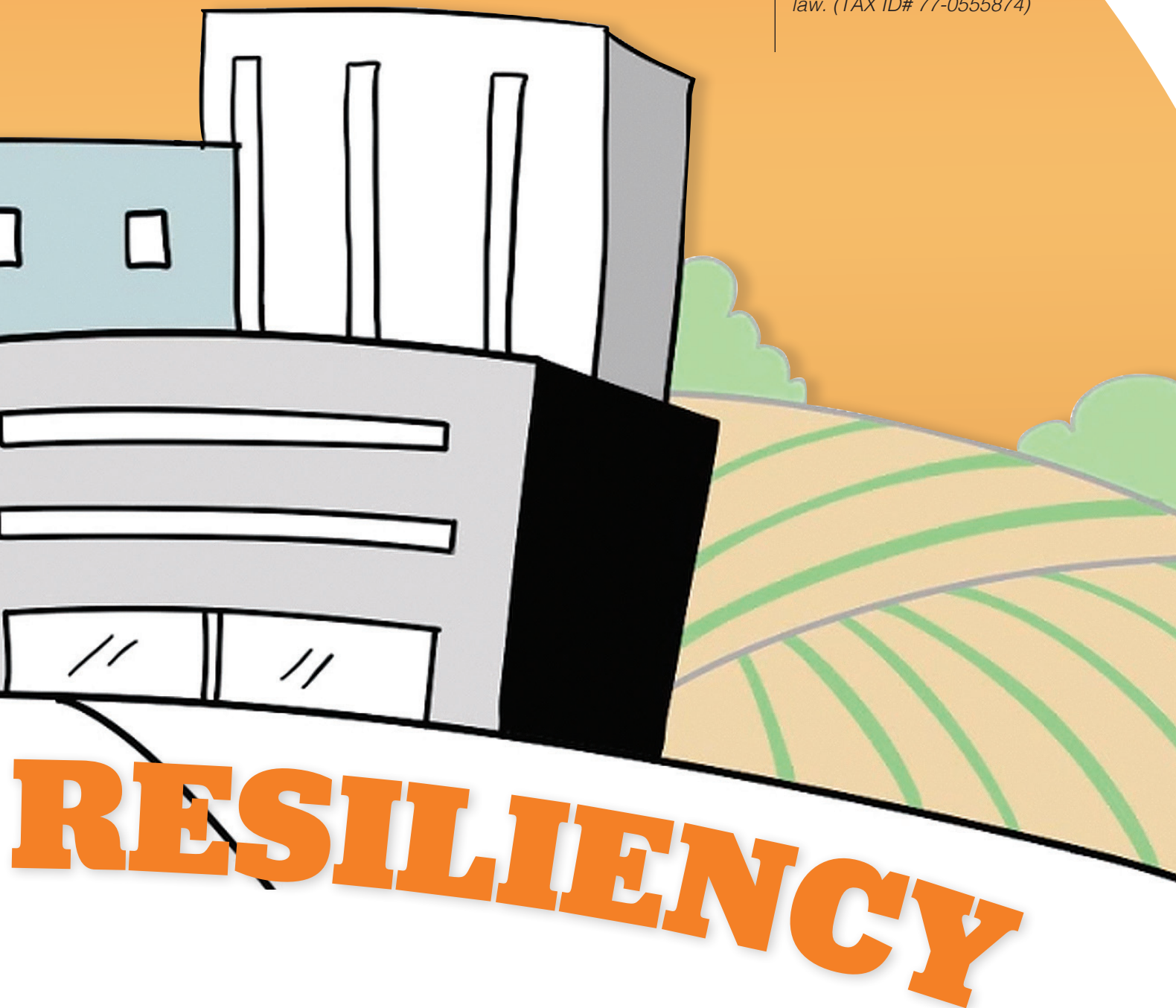
- A Community Calendar on our website that exclusively showcases nonprofit community fundraisers and educational events;
- Thought leadership through an in-depth introduction of "agile" thinking to Kern's nonprofit sector to help community-based organizations adapt to uncertainty nimbly, embracing change and turning future challenges into strengths that can be harnessed to support a more vibrant community;

- Advocacy on behalf of nonprofits before civic leaders and the business community, to raise the value of the nonprofit sector in their eyes as an integral and dynamic part of the local economy;
- An ongoing commitment to Nonprofit Strengthening through our already existing efforts: Give Big Kern, Philanthropy on Tap, Jumpstart, leadership within the Kern Alliance of Nonprofits and donor-directed grantmaking.

Would you like to partner with us in "Growing Resiliency" among Kern's nonprofit sector? You can help our long-term efforts by donating to the Preparedness and Resiliency Fund

at Kern Community Foundation. This endowed fund will help to build a permanent reserve to support future community needs proactively (as opposed to reactively), including by helping to prepare nonprofits for crises ahead of time through resiliency and preparedness training and resources. You, too, can be a pioneer together with us in helping to shift our community's giving spirit from transactional charity to transformational philanthropy. Write to us at info@kernfoundation.org.

Your generosity is critical to our efforts to meet Kern County's many community needs. Contributions made to Kern Community Foundation or its funds are tax deductible as allowed by law. (TAX ID# 77-0555874)



Health

Advanced Center for Eyecare

To provide high quality eyecare services to the underserved and uninsured population of Kern County.

acecares.org

Adventist Health Bakersfield

Foundation

Living God's love by inspiring health, wholeness and hope.

adventisthealth.org/bakersfield

Adventist Health Medical Center

Tehachapi

Living God's love by inspiring health, wholeness and hope.

adventisthealth.org/tehachapi-valley

ALS Association Golden West Chapter

To discover treatments and cures for ALS, and to serve, advocate for, and empower people affected by ALS to live their lives to the fullest.

alsagoldenwest.org

Alzheimer's Association

To eliminate Alzheimer's through research; provide support for all affected; and to reduce dementia through brain health.

alz.org/socal



Alzheimer's Disease Association of Kern County, Inc. (ADAKC)

To improve the lives of Kern County residents affected by Alzheimer's disease and related disorders.

adakc.org

American Cancer Society

To save lives, celebrate lives and lead the fight for a world without cancer.

cancer.org

American Heart Association

To build healthier lives free of cardiovascular disease and stroke.

heart.org

Baby Café Bakersfield

Providing access to breastfeeding care and education for families in Kern County.

babycafeusa.org

Bakersfield Memorial Hospital Foundation

Contributing to the quality of life in our community by funding healthcare technology and services at Bakersfield Memorial Hospital.

supportbakersfield.org

Bakersfield Pregnancy Center

Empowering individuals to make healthy, life-affirming choices regarding pregnancy and sexual health.

bpcpartners.org

Bakersfield Recovery Services (Jason's Retreat/Capistrano Community for Women)

Assisting our clients in their recovery from substance abuse to become happy, healthy and productive citizens of our community.

bakersfieldrecoveryservices.com



Bakersfield Ronald McDonald House

To provide comfort, care and support to children and families in Southern California.

rmhscs.org

Bike Bakersfield

To promote bicycling as a safe, fun and environmentally friendly means of everyday transportation.

bikebakersfield.org

Clinica Sierra Vista

To improve the health status and wellbeing of the communities we serve through integrated, coordinated, compassionate healthcare.

clinicasierravista.org

Make a difference



Alzheimer's Disease Association of Kern County (ADAKC)

— \$50 provides half a day of care for a client living with Alzheimer's.



Learning Dynamics Inc.

— \$100 makes it possible to offer 10 telehealth (virtual) therapy sessions during the COVID-19 pandemic.



Adventist Health Bakersfield Foundation

— \$250 helps with a wig purchase for someone undergoing cancer treatment.



Foundation ThinkAgain

— \$1,000 pays for approximately 10 rehabilitation therapy sessions to pediatric cancer survivors in Kern County.



Bakersfield Ronald McDonald House

— A donated car, recreational vehicle, truck, motorcycle, boat or yacht helps support Ronald McDonald House families with sick children, while allowing the donor to receive the maximum legal tax deduction for their gift.

CSF Medical Nonprofit Foundation

Helping uninsured low-income individuals with the total or partial cost of life-changing surgeries or medical procedures, and promoting early disease prevention.

csffoundation.org



Foundation ThinkAgain

To significantly increase the functionality of pediatric cancer survivors by providing rehabilitation therapies.

thinkagain.org

Friends of Mercy Foundation

To raise and administer philanthropic contributions in support of Mercy Hospitals in Bakersfield California.

supportfriendsofmercy.org



Hina Patel Foundation

To increase Sickle Cell awareness and provide education and services to enhance the wellbeing of affected people and their families.

hinapatelfoundation.org

Hoffmann Hospice

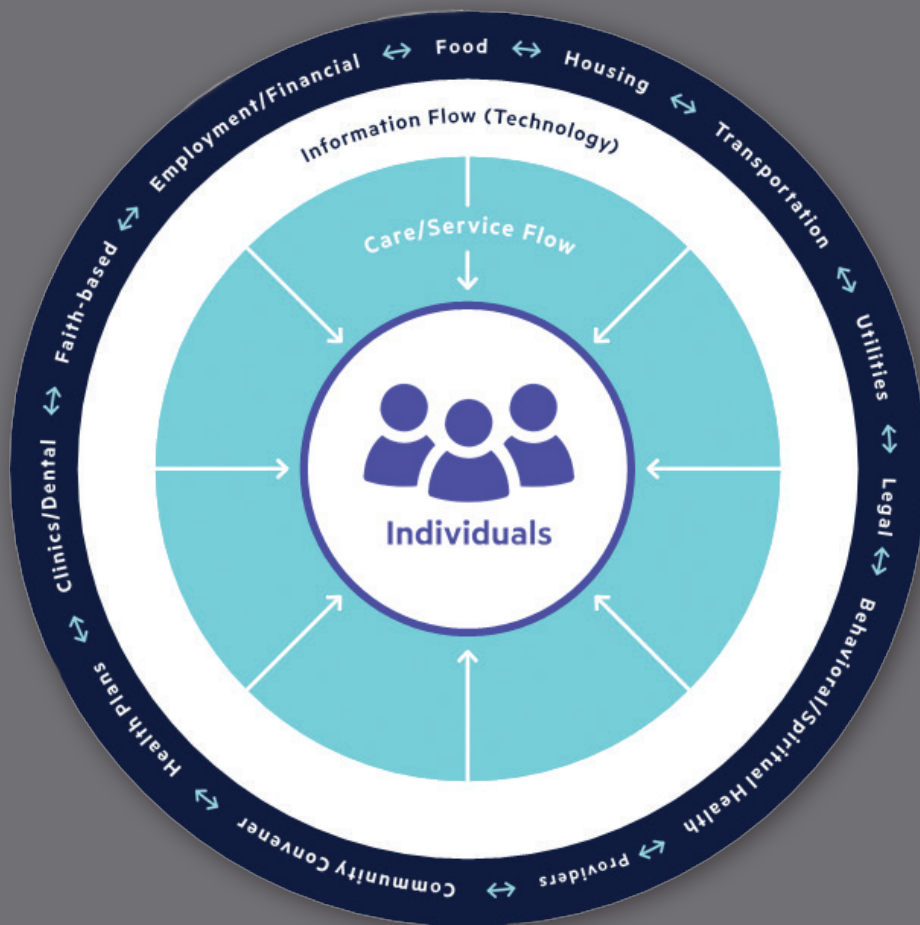
To celebrate the sanctity of life, provide compassionate end-of-life care and comfort the grieving.

hoffmannhospice.org

Hope Charity International

To be a vital force in the advancement of approaches to cancer treatment, control, and prevention.

hopecharityinternational.org



Kern Connected Community Network

The Kern Connected Community Network was launched locally in 2020 to construct a community solution to address the social determinants of health and link individuals to community resources. Why? Besides providing an opportunity to create efficiencies within Kern's social service network, research identifies that 40 percent of an individual's health outcomes are tied to social and economic determinants. Addressing these social needs is critical to caring for the whole person and ensuring that people have all the support needed to achieve their best health and wellness.

The Kern CCN is built around a network of community partners working together to send and receive electronic referrals and track outcomes for vulnerable populations. A key element of the CCN is a technology platform that streamlines the referrals for social needs to organizations providing direct services, electronically linking an individual's

entire "care team" to coordinate care and removing the onus on the client to navigate much-needed services for themselves.

Kern Community Foundation is proud to serve as the neutral convener and fiscal agent of the Kern CCN, working to bring a diverse group of community-based organizations and agencies to participate in the network. In time, the Kern CCN will provide a more cohesive network of support services for Kern County residents and empower community partners with the tools they need to work more efficiently and collaboratively while generating longitudinal data to help improve community health outcomes.

Do you work with vulnerable populations and are you interested in plugging into the Kern Connected Community Network to ensure the smoothest possible client referrals? *Connect with us by writing to info@kernfoundation.org.*

Health

JDRF Los Angeles Chapter (also serving Kern County)

Funding Type 1 Diabetes research, and improving lives by accelerating life-changing breakthroughs to cure, prevent and treat T1D and its complications.

jdrf.org/la

Kern Medical Foundation

Proudly partnering with our community to support Kern Medical's life-changing and life-saving programs.

kernmedicalfoundation.com

Kern Valley Hospital Foundation

To provide financial support to Kern Valley Hospital by funding and supporting programs that have a positive impact on patients and our community.

kvhd.org

Learning Dynamics Inc.

To make psychological and educational support affordable and attainable for all ages.

learningdynamicsinc.org

Leukemia & Lymphoma Society - Central California

To cure leukemia, lymphoma, Hodgkin's disease and myeloma, and improve the quality of life of patients and their families.

lls.org/ccca

Links For Life

To provide breast cancer diagnosis, services and support for Kern County women in need.

linksforlife.org

National Multiple Sclerosis Society, Southern California & Nevada Chapter

Helping people affected by MS to live their best lives as we stop MS, restore what has been lost and end MS forever.

nationalmssociety.org/Chapters/CAL

Nurse-Family Partnership

Empowering first-time mothers living in poverty to successfully change their lives and the lives of their children.

nursefamilypartnership.org

Olivia's Heart Project

To increase awareness about sudden cardiac arrest in children and young adults in order to keep young hearts beating.

olivasheartproject.org

Omni Family Health

Committed to improving the health of our communities by providing the highest quality healthcare to everyone.

omnifamilyhealth.org

Optimal Hospice Foundation

To ensure hospice and bereavement programs for patients and families facing a life-limiting illness: Programs include hospice funding and Kids Camp.

optimalhospicefoundation.com

Partners In Care Foundation

To shape the evolving health system by developing and spreading high-value models of community-based care and self-management for diverse populations.

picf.org

Pregnancy Resource Center of the Kern River Valley

Encouraging women to make life-giving choices by offering material assistance, spiritual care and peer counseling.

prckrv.wixsite.com/wearehere

Public Safety Professionals Retreat

(ProSPeR - formerly Rotary House Retreat)

Providing a safe, confidential facility for stress/trauma healing and education for law enforcement, firefighting, and other public safety/emergency response professionals and retirees.

prosperetreat.com

Rising Star Riders

(formerly known as Kelly's Therapeutic Riders)

Dedicated to serving the needs of children and adults with physical and/or emotional challenges through horseback riding, therapeutic horseback riding and horse management lessons.

rsriders.org

Thumbs Up Cancer Down (TUDC)

To provide support and encouragement to people with cancer and those going through treatment.

thumbsupcancerdown.com

Tigerfight Foundation

To provide financial assistance to Kern families being treated for any form of pediatric blood cancer, and fundraise for the Leukemia and Lymphoma Society.

tigerfight.org

Valley Caregiver Resource Center

Assisting seniors and caregivers with the challenges that accompany the aging process.

valleycsrc.org

Valley Children's Health Care Foundation

To generate funds to support the goals of Valley Children's Health-care and its affiliated entities.

valleychildrens.org/foundation

Valley Fever Americas Foundation

To fund a vaccine and a cure for Valley Fever, as well as to raise public awareness about this disease.

valleyfever.com



Growing Resiliency Through Endowment

An endowed fund is one that is held in perpetuity to support community needs. At Kern Community Foundation, we like to think of endowed funds as ones set up “for good, forever.” The principal of an endowed fund is not granted out but remains intact. A portion of annual earnings, on the other hand, may be invested in the community as grants to nonprofit organizations, or scholarships for youth, depending on the donor’s original intent or, in the case of nonprofit or agency endowments, may be used to offset the organization’s administrative or programmatic needs. Any earnings that that remain are reinvested back into the fund.

Over time, the principal of an endowed fund grows, and as it does, annual earnings grow as well, providing a consistent stream of support to the fund’s intended cause or causes—forever.

Following is a list of some of the endowed funds at Kern Community Foundation. The ones marked with an asterisk have been set up in support of a specific organization and are therefore considered agency endowed funds. These local charities or causes understand the power of growing resiliency through endowment. Endowed funds are like insurance for a rainy day—or for seizing upon opportunities as they present themselves, too. They can provide funds when you need them most and are always an asset—never a liability.

- Peter Anthony Catholic Education Fund
- Arthritis Association of Kern County Fund*
- Bakersfield ARC Foundation Endowment Fund*
- Bakersfield Christian High School Endowment Fund*
- Bakersfield High School Endowment Fund*
- California Living Museum (CALM) Al Robbins Endowment Fund*
- Community Endowment Fund
- Foothill (High School) Foundation Endowment Fund*
- Heart Never Forgets Endowment Fund (supports ADAKC)*

- Kern Audubon Society Fund*
- Kern Futures Scholarships Together Fund
- Kern Preparedness and Resiliency Fund
- Kern River Preserve Stewardship Endowment Fund
- Kern River Valley Community Fund
- Kern River Valley Heritage Foundation Stewardship Fund*
- Leaders in Life Endowment Fund*
- Links for Life Legacy Endowment Fund*
- Noel E. Daniells Permanent Endowment Fund
- Shafter Historical (Society) - Ohanneson Fund*
- Southern Sierra Research Station (SSRS) Stewardship Endowment Fund*
- The Cat People Endowment Fund*
- The Golden Empire Gleaners Endowment Fund*
- West High School Alumni Association Endowment Fund*
- Westminster Presbyterian Church Foundation Endowment Fund*
- Westminster Presbyterian Church Foundation – Global Gifts End*
- The Fox Theater Foundation Endowment Fund*
- The Women’s and Girls’ Fund at Kern Community Foundation

It is easy to establish an endowed fund at Kern Community Foundation. We offer a number of options to fit each donor’s—or nonprofit’s—philanthropic mission. A “Crop Gift” is a great way for nonprofits who have benefactors in the farming community to jumpstart an endowed fund with us. To learn more about Crop Gifting, please refer to the section at right. To learn more about other ways to establish an endowed fund, contact us at info@kernfoundation.org or 661.325.5346.

Not ready to establish an endowed fund at this time? It is also easy to support any one of the endowed funds listed above. Simply go to our website, kernfoundation.org, click on the “Donate Now” button and choose the fund you wish to give to. You can also make a donation over the phone using a major credit card. Just call us.

Crop Gifting

Kern Community Foundation makes it easy for local farmers to become philanthropists by helping them “plant” a part of their crop as cash to benefit their favorite causes, and watching their investment grow tax-free.

How does Crop Gifting work?

- A farmer identifies unsold crop inventory with no prior sale commitments.
- They inform Kern Community Foundation of their intended gift and sign an agreement to give up dominion and control of the crop.
- The Foundation assumes responsibility for transportation, processing, storage and marketing of the crop, through final sale.
- Net proceeds from the sale of the donated crop are invested in a personalized fund for tax-free growth, and used by the farmer to recommend grants to virtually any IRS-qualified charity.

Some taxpayer benefits of Crop Gifting

- Reducing the amount of profits earned from farming on a tax return the year the crop gift is made.
- Being able to deduct the costs of production of the donated crop.
- Not having to pay Federal, State, and self-employment taxes on the value of the donated crop.
- While there is no charitable deduction for a donated crop, any appreciation of gifted assets happens tax-free within the fund where net proceeds from the crop sale are deposited.

Some community benefits of Crop Gifting

- Stimulating Kern’s economy by keeping charitable dollars local.
- Helping to meet great local needs around poverty, homelessness/hunger, animal welfare, low educational attainment, environmental quality and more.
- Limiting food waste from otherwise potentially unused crops.

For more information, contact the Foundation at 661.325.5346 or info@kernfoundation.org.

Human Services and Community Benefit

A Dream Shared

To provide a place for people with disabilities a chance to learn, grow, and excel in life.

adreamshared.org

ACLU Foundation of Southern California

Defending the fundamental rights outlined in the United States Constitution and the Bill of Rights.

aclusocal.org

AHH (A Helping Hand)

Helping people to help themselves.

ahelpinghand.org

Alliance Against Family Violence and Sexual Assault

To stop domestic violence, sexual assault and human trafficking in Kern County and assist survivors in reclaiming their lives.

kernalliance.org

Alpha House: A Place for New Beginnings

To provide a safe and nurturing environment for battered and homeless women and their children while presenting them with options for a healthy lifestyle.

alphahouse.us

American Red Cross - Kern County & Eastern Sierra Chapter

To prevent and alleviate human suffering in the face of emergencies by mobilizing the power of volunteers and the generosity of donors.

redcross.org

Bakersfield 3 Charity

Dedicated to providing safe communities by raising funds for crime prevention and the solving of homicides and other crimes.

bakersfield3.org



Aqua-Nut Divers: Veterans Empowered Through Scuba

To provide a transformative experience for disabled military veterans through scuba at no cost to them, providing a healthy outlet.

aqua-nut.com/vets

Arms of Hope

To combat homelessness and substance abuse and assist people to achieve wholeness and be overcomers.

[facebook.com/pages > Arms of Hope](https://facebook.com/pages/Arms%20of%20Hope)

Aspiranet

Envisioning a world in which all children and youth are loved and cared for, and all families have the resources to thrive.

aspiranet.org

Assistance League of Bakersfield

To serve the community through volunteering and ongoing philanthropic programs.

assistanceleague.org/Bakersfield

Autism Society-Kern Autism Network

To provide support, awareness, information and education about autism to families and the public in Kern.

kernautism.org

Bags of Love Foundation

To provide hope to children affected by cancer, and their families.

bagsoflovefoundation.com



Bakersfield Angels

Wrapping community around children and families in the foster care system through intentional giving, relationship building and mentoring.

nationalangels.org

Bakersfield ARC

To build a stronger community by helping people with intellectual and developmental disabilities achieve individual goals for a better life.

barc-inc.org

Bakersfield East Rotary Foundation

Providing grants, scholarships and allocations for community, national and international projects.

portal.clubrunner.ca/2817

Bakersfield Homeless Center

To provide support and resources to families and individuals in crisis while helping them to achieve their highest level of self-sufficiency.

bakhc.org

Make a difference



The Necessary Economic Emergency Distribution Services (NEEDS) Center

— \$50 pays for approximately a week's worth of food for a one-to-two-person household.



Defy Ventures — \$100 (or \$8 a month) provides curriculum and materials to an incarcerated Entrepreneur in Training (EIT) enrolled in Defy's program.



Valley Center for the Blind — \$200 provides a magnifying device to help people regain the ability to read mail, menus at restaurants, books and magazines, allowing independence and self-sufficiency.



Aqua-Nut Divers — \$800 funds an advanced scuba certification for one veteran (includes learning materials, equipment, rental gear, ferry tickets, parking, and hotel stay), to help them deal with PTSD through scuba.



Magdalene Hope — \$2,900 helps fund Restoration Ranch Women's Shelter for one month, where victims rescued from human trafficking can dwell temporarily in safety.

Bakersfield Senior Center

Providing services, programs and socialization especially to underserved, low-income and veteran senior citizens to help improve their health and wellbeing.

bakersfieldseniorcenter.org

Bakersfield-Kern Regional Homeless Collaborative

To put an end to homelessness in Kern County through collaborative planning and action.

endkernhomeless.org

Be Finally Free

To restore and equip those impacted by addiction, crime, incarceration and poverty by providing education, instilling life skills and giving hope to overcome their circumstances.

befinallyfree.org

Bethesda Lutheran Communities

Enhancing the lives of people with intellectual and developmental disabilities through services that share the good news of Jesus Christ.

bethesdalc.org

Blessing Box Foundation

To provide nutritional assistance to those who are food insecure in Kern County by growing a network of community-sponsored 24-hour nutritional access points.

blessingboxfoundation.org

Brooklyn's Box, Inc.

To provide support and education to medically vulnerable children and their families, and to enrich lives through love, joy and medical awareness.

brooklynnsbox.org

California Family Counseling Network, Inc.

To sponsor special events for charitable purposes for the psychological and mental health care of families, especially those that are underserved.

cfcninc.org

California Farmworker Foundation

To serve and support California farmworkers by providing programs and services to better their quality of life.

californiafarmworkers.org

California Rural Legal Assistance, Inc.

To fight for justice and individual rights alongside the most exploited communities of our society.

crla.org

California Veterans Assistance Foundation

To serve homeless, at risk and low income veterans and their families, and to restore and improve lives by alleviating homelessness through information, advocacy and service.

cavaf.org

Casa Esperanza**Transitional Home for Women**

Through an innovative and holistic approach, providing a home for homeless women and children transitioning to independence.

esperanzabakersfield.org

CASA (Court Appointed Special Advocates) of Kern County

To speak on behalf of abused and neglected children in the foster care process, through the use of highly trained volunteers.

kerncasa.org

Catholic Charities of Bakersfield

Respecting the presence of God among us, we serve, advocate for and empower those in need.

ccdof.org

Center on Race, Poverty & the Environment (CRPE)

To achieve environmental justice and healthy, sustainable communities through collective action and the law.

crpe-ej.org

Central California Food Bank

To fight hunger in Central California by gathering and distributing food to those in need.

ccfoodbank.org

CityServe Network

A collaborative network of churches and community leaders connected to launch sustainable compassion initiatives and overcome brokenness.

cityservenetwork.com

Cole's Comrades

Ensuring all families who have lost a member of the military, either active or inactive, are provided support and resources.

[facebook.com/groups > Cole's Comrades](https://facebook.com/groups/Cole's+Comrades)



Jumpstart

Jumpstart is a true public-private partnership among **Kern Community Foundation**, fundraising technology and training giant **Network for Good**, and the **Kern County Board of Supervisors**.

Since 2019, this competitive technical assistance grant program has allowed up to five Kern County nonprofits—one per each of Kern's Supervisorial Districts—the opportunity to receive up to 12 months of customized fundraising training and easy-to-use all-in-one software from Network for Good at a greatly subsidized tuition cost.

Participating nonprofits commit to making a skin-in-the-game investment of time and money toward implementing a revenue-generating model that weds the high-touch nurturing and cultivation of long-term relationships with individual donors, to the high-tech use of donor development software to help them diversify and expand funding streams, while keeping donors engaged through the creative use of new technologies, including e-mail and social media marketing, video, and text messaging.

The program saw more than a tenfold return on investment during its first year. Besides grant-subsidized nonprofits, there are other community-based organizations that have found great value in Jumpstart and enrolled at full tuition cost.

Jumpstart is truly the type of long-term Nonprofit Strengthening Kern Community Foundation is committed to delivering to Kern's hard-working nonprofits so they can work smarter, not harder, including during times of crisis.

Questions about Jumpstart?
Write to info@kernfoundation.org.



Human Services and Community Benefit

Community Action Partnership of Kern (CAPK)

To provide and advocate for resources that will empower members of the communities we serve to be self-sufficient.

capk.org

Cornerstone Center for Substance Abuse Services (AKA Cornerstone Center for Counseling and Discipleship)

Offering hope and healing to our community.

cornerstoneccd.com

Covenant Community Services

Restoring lives and transforming generations for current and former foster youth.

covenantcs.net

Dress For Success Bakersfield

Empowering women to achieve economic independence by providing support, skills training and professional attire.

bakersfield.dressforsuccess.org

Emmanuel Lutheran Church

To faithfully serve the community, spreading love, healing, and justice.

emmanuelbakersfield.org

Exceptional Family Center

To celebrate the success of families and their children with an intellectual and/or developmental disability through collaboration, education, empowerment and mutual support.

kernefc.org

Farmworker Institute of Education and Leadership Development

To promote social and economic prosperity in rural communities through education.

farmworkerinstitute.org

Flood Bakersfield Ministries

Providing permanent housing and supportive services to ensure housing stability for the street homeless population.

floodbako.com

Garden Pathways, Inc.

Transforming lives from the inside out through loving, mentoring relationships

gardenpathways.org

Global Family Care Network

To protect and restore young, at-risk girls through girls' empowerment clubs and a homeless/runaway youth shelter.

globalfamily.care

Golden Empire Gleaners

To help alleviate hunger and provide food for those in need in Kern County.

goldenempiregleaners.com

Goodwill Industries of South Central California

To provide work opportunities and skills development to people with barriers to employment.

thegoodwill.org

Got Ur 6

To promote the physical, intellectual, emotional, social and economic wellbeing of all citizens of Boron and surrounding areas. To empower all.

gotur6.net

Greater Bakersfield Legal Assistance

To promote social change and justice by providing high quality legal services to the low-income community.

gbla.org

Greater Lighthouse Community Outreach (The Blessing Corner)

Providing opportunities and enriching indigent lives through the provision of basic human services and resources that offer hope.

theblessingcorner.com

Habitat For Humanity Golden Empire

Seeking to put God's love into action, we bring people together to build homes, communities and hope.

habitatkerncounty.org

H.E.A.R.T.S. Connection

To enhance the quality of life for people with special needs through a family resource center that symbolizes professionalism, dignity, compassion and respect.

heartsfrc.org



Defy Ventures

Leveraging entrepreneurship as a tool to increase economic opportunity and transform lives of people with criminal histories.

defyventures.org

Desert Area Resources and Training

To provide services and opportunities to people who have disabilities or other special needs, so they can pursue their dreams.

dartontarget.org

Dolores Huerta Foundation

To inspire and organize communities to build volunteer organizations empowered to pursue social justice.

doloreshuerta.org

Faith In The Valley - Kern

Building the collective power to make California's Central Valley a place where people can have safe lives rooted in racial, economic, environmental and health equity for all.

faithinthevalley.org



Henrietta Weill Memorial

Child Guidance Clinic

Providing mental health and substance abuse services and the resources necessary to promote recovery for children, adults and families.

hwmcgc.org

High Desert Lighthouse Ministries

(The Lighthouse)

A place of prayer and worship with a goal of bringing unity to the body of Christ and sharing God's love with everyone.

thelighthouserc.com

Honor Flight Kern County

To honor and send America's veterans to Washington, D.C., to see memorials built in THEIR honor - at no cost to the veteran.

honorflightkerncounty.org

Housing and Opportunity

Foundation of Kern

To empower families to become self-sufficient and improve their quality of life through education and support programs offered at affordable housing sites.

kernopportunityfoundation.org

Independence Through GRACE

Enhancing the lives of adults with intellectual disabilities through faith-based enrichment programs.

itsgrace.org

Independent Living

Center of Kern County

Empowering people with disabilities to grow creatively, professionally, and personally; and educating the community about disability-related issues.

ilcofkerncounty.org

Indian Wells Valley Economic

Development Corporation

To enhance the economic prosperity and quality of life in the Indian Wells Valley.

iww-edc.com

JJ'S Legacy

Educating Kern County residents and inspiring them to become registered organ and tissue donors, and providing compassionate support to donor and recipient families.

jjslegacy.org

Junior League of Bakersfield

Promoting voluntarism, developing the potential of women and improving the community through the effective action and leadership of trained volunteers.

juniorleagueofbakersfield.org



A Better Bakersfield & Boundless Kern, otherwise known as **B3K Prosperity**, is a public-private collaboration to develop a roadmap and investment plan for economic growth and inclusion in Kern County.

Building on a rich history of economic development efforts, B3K Prosperity connects and coordinates existing activity for shared problem-solving and the drafting of a blueprint for future regional success. Supporting a rich vision for our community's future is at the very heart of Kern Community Foundation's work and we proudly serve as a member of the B3K Core Team.

Since early summer 2020, a group of business, government, education, and community stakeholders have organized to address three primary challenges facing Kern County:

1. Extreme pressure on the industries that historically drive our region's economy;
2. A lack of quality jobs – and access to them – that would enable residents to be self-sufficient and reach the middle class; and

3. The need to align fragmented regional public-private efforts and investment behind common goals.

Over time, B3K Prosperity will produce several tools to attract investment and promote growth, prosperity and inclusion, such as:

- A map of existing economic development programs, initiatives and organizations;
- A Strategy Report with goals, objectives, tactics and performance measures;
- An Operating Plan with local commitments for action and implementation of collectively agreed-upon goals;
- Investment Prospectuses to seek immediate support for projects; and
- A structure for ongoing governance, sustainability and maintenance of B3K Prosperity.

To learn more about this exciting initiative and consider opportunities to join us, please visit b3kprosperity.org.

Human Services and Community Benefit



Kern Around the Clock Foundation

Preventing premature or inappropriate institutionalization of at-risk elderly and functionally impaired adults through case management, information and assistance.

bakersfieldcare.com

Kern County Teen Challenge

Providing youth, adults and families with an effective and comprehensive Christian faith-based solution to life-controlling drug and alcohol problems.

teenchallenge.org

Kern Leadership Alliance

To see every believer in Jesus activated in his or her sphere of influence to transform Kern County.

kernleadershipalliance.org

Kern River Valley Family Resource Center

Providing support to local families with concerns ranging from medical, dental, parenting, and nutritional issues, to assistance with school readiness and referrals for utility costs.

kernvilleusd.org

Kern River Valley Senior Center

Providing assistance and a meeting space to senior citizens in the Kern River Valley.

Life Skills Training and Educational Programs, Inc.

(LifeSTEPS)

Providing effective educational and supportive services to maximize the strengths of individuals and build resilient communities.

lifestepsusa.org

Magdalene Hope

In the spirit of social justice, bringing awareness about the sexual exploitation of women, human trafficking and modern-day slavery.

magdalenehope.org

Make-A-Wish (Northeast & Central CA, and Northern NV)

Granting life-changing wishes for children with critical illnesses.

wish.org/canv

MARE Riding Center

Providing therapeutic equine-assisted activities for people living with special needs and disabilities.

mareridingcenter.com

MCSC (Mission Community Services Corporation)

Kern Women's Business Center

Dedicated to enhancing opportunities for potential entrepreneurs to become self-sustaining, successful contributors to their communities.

mcscorp.org

THE POWER TO

strengthen our community

Bank of America is a strong supporter of Kern County's nonprofit sector — this includes Kern Community Foundation's *Community Giving Guide*. This year's guide was created in part by Bank of America Student Leaders during their internship with Kern Community Foundation.

The Bank of America Student Leaders® program is just one part of our ongoing commitment to youth employment and economic opportunity. In Bakersfield/Kern County, the program matches two high-performing high-school students with a local nonprofit organization, resulting in a paid summer internship. Each year, in addition to their internship, we connect this diverse pipeline of community-minded young students from across the nation to leadership training, strengthening their ability to be successful in the workplace and in the communities they call home.

For more information about our local efforts and Student Leaders visit bankofamerica.com/local.

BANK OF AMERICA 

Mercy House - Brundage Lane Navigation Center

To be a leader in ending homelessness by providing a unique system of dignified housing opportunities, programs, and supportive services.

mercyhouse.net

Mercy Housing California

To create stable, vibrant and healthy communities by developing, financing and operating affordable, program-enriched housing for families, seniors and people with special needs.

mercyhousing.org/california

Mexican American Opportunity Foundation

Providing for the socioeconomic betterment of California's greater Latino community, while preserving the pride, values and heritage of the Mexican American culture.

maof.org

Missing in Action Remembered

Providing an effective means of community outreach to inform and educate the public about the plight of veterans still Missing In Action.

miaremembered.org



Morning Star Fresh Food Ministry

Fighting hunger and feeding souls with fresh food and the love and hope of Jesus.

morningstarfresh.org

Mothers Against Drunk Driving (MADD), Kern County

To end drunk driving, help fight drugged driving, support the victims of these violent crimes, and prevent underage drinking.

madd.org

Mountain Communities Family Resource Center

With our partners, we enrich families, enhance community and empower youth.

mcfrc.com

NALEO Educational Fund

A non-partisan organization that facilitates full Latino participation in the American political process, from citizenship to public service.

naleo.org

NAMI (National Alliance on Mental Illness) Kern County Chapter

To provide support, education and advocacy for those with mental illness and their loved ones.

namikerncounty.org

National Association for the Advancement of Colored People (NAACP) - Bakersfield

To ensure the political, educational, social, and economic equality of rights of all persons and to eliminate race-based discrimination.

naacpbako.com

Noel Alexandria Foundation

To raise awareness and provide free resources to families affected by pregnancy and infant loss.

noelalexandriafoundation.org

North of the River

Recreation Foundation

Preserving the community's vitality and livability by raising funds to enhance and expand parks, recreation and programs, and providing access and opportunity for all.

norfun.org

Oildale Community Action Team

Restoring hope in Oildale and Greater Bakersfield through community activities and partnerships with local government and community agencies.

facebook.com/oildalecommunityactionteam

PATH

(People Assisting the Homeless)

To end homelessness for individuals, families, and communities.

epath.org

PathPoint

Working with people with disabilities in Kern County to enhance workplace abilities, build life skills, and develop meaningful relationships.

pathpoint.org

Portrait of a Warrior Gallery

Keeping the memories of the Kern County Fallen from post-9/11 service alive.

kernwarriors.com

Prince Noble Foundation, Inc.

Improving the quality of life for low-income residents of Kern County by assisting in feeding, clothing and housing support.

princenoblefoundation.org

Rebuilding Together Kern County

Repairing homes, revitalizing communities, rebuilding lives.

rebuildingtogetherkerncounty.org



Save a Life Today (S.A.L.T.)

To provide suicide education, prevention and postvention.

saltkc.com

Self-Help Enterprises

Working together with low-income families to build and sustain healthy homes and communities.

selfhelpenterprises.org

Shar-On Corporation

To nourish those in need through free daily meals, creative expression, kindness and individual empowerment.

shar-on.org

SJV Water

Covering the politics of water in the San Joaquin Valley, where crops that create billionaires grow in fields next to communities without drinkable water.

sjwwater.org

Society for Disabled Children

To identify, assess and provide services and programs to children with disabilities in Kern County.

societyfordisabledchildren.org

Special Olympics Southern California, Kern County

Enriching the lives of athletes with intellectual disabilities and their communities through sports, education and athlete health.

sosc.org/kern

Human Services and Community Benefit

Stewards

Advocating for homelessness prevention through connection to social services, resources, and acting as an appointed representative payee service.

stewardsinc.org

The Center for Sexuality & Gender Diversity

Providing safe, supportive spaces and services to the gay, lesbian, bisexual and transgender community, and serving as a bridge to the greater community in Kern County.

thecenterbak.org

The Hope Center

Sharing the Hope of Christ while assisting with food, clothing and basic needs.

hopecenters.net

The Mission at Kern County

Providing an environment conducive to the physical, emotional and spiritual well-being of the people we serve.

themissionkc.org

The N.E.E.D.S. Center, Inc.

Improving clients' health and wellbeing by distributing food, rent and utility assistance, clothing, household items, and hot meals.

[facebook.com/pages > NEEDS Center](https://facebook.com/pages/NEEDS-Center)

The Plank Foundation

To provide emergency funds in the areas of health, hunger and humanity, cancer care and treatment, and hospice support in Kern County.

plankfoundation.com

The Salvation Army Bakersfield Corps

To preach the gospel of Jesus Christ and to meet human needs in His name without discrimination.

bakersfield.salvationarmy.org

The Salvation Army Ridgecrest Corps

To preach the gospel of Jesus Christ and to meet human needs in His name without discrimination.

ridgecrest.salvationarmy.org

The Salvation Army Service Extension

Providing basic human needs to the rural areas of Kern County in fulfillment of The Salvation Army's goal of "Doing the Most Good."

westernusa.salvationarmy.org

Trinity Medical Transport Foundation

Providing low-cost and free non-emergency medical transport services to the uninsured and low-income communities.

trinitymedicalfoundation.org

UFW Foundation

To empower communities to ensure human dignity.

sisepuede.org

United Way of Kern County

Improving community conditions in education, health, and financial stability through programs and services that enhance Kern County residents' lives.

uwkern.org

Valley Achievement Center

To empower individuals on the autism spectrum or with other developmental disabilities to achieve the highest quality of life.

autism-vac.org



Valley Center for the Blind

Dedicated to assisting blind and visually impaired persons in experiencing more independent and opportunity-filled lives.

valleycenterfortheblind.org

Victory Family Services

Supporting foster children and families, because every child deserves victory.

victoryfs.org

Vision y Compromiso

Supporting promotoras and community health workers to address disparities and improve health outcomes for underrepresented communities.

visionycompromiso.org

Volunteer Center of Kern County Inc.

Mobilizing people and resources to deliver creative solutions to address community issues through volunteerism.

volunteercenter.info

WarmLine

Providing a peer mentor program for young mothers, focusing on healthy family relationships and positive parenting skills, and serving bilingual families with children 0-6 years old.

e-warmline.org

Weill Child Guidance Foundation

To secure donations and engage in fundraising activities to provide financial support for the Henrietta Weill Memorial Child Guidance Clinic.

weillguidancefoundation.org

Wendale Davis Foundation

To provide resources that will help historically marginalized groups to become productive members in their communities.

wendaledavisfoundation.org

We're Here Nonprofit

Helping clients with the provision of basic needs, utility and transportation assistance, and emergency transitional and long-term housing referrals.

wereherenonprofit.net

Women's Center-High Desert Inc.

Providing a network of prevention, education and direct client services relating to domestic violence, sexual assault and child abuse for Eastern Kern and surrounding counties.

womenscenterhighdesert.org

Wounded Heroes Fund

Serving Veterans and their families affected by the war on terror, by facilitating a healthy transition to civilian life through support and appreciation.

thewoundedheroesfund.org

Wounded Warrior Project

To honor and empower Wounded Warriors.

woundedwarriorproject.org



The Aera Energy Fund



Aera Energy's commitment to building stronger communities is there when communities are thriving and during times when they need it most.

That's why we created the Aera Energy Fund at Kern Community Foundation in 2005. Since then, we've provided more than \$4 million in funding to nonprofits in the communities where our people live and work during some of the most challenging of times - from the recession of 2008 to the pandemic today.

Through the Aera Energy Fund, Aera provided \$100,000 in emergency funds to Kern Community Foundation's COVID-19 Relief Fund in March 2020, which in turn helped raise more than \$525,000 in emergency relief for more than 100 local nonprofits. The fund also provided \$150,000 to support COVID-19 relief in Fresno, Madera, Monterey and Ventura counties.

We know that when we give, we can power greater

aspirations in the organizations and projects we support. A new roof and solar-panel system for the Boys & Girls Clubs of Kern County in 2019, will save the clubs \$10,000 a year in energy costs, which they can invest in programming to help more kids achieve. The Mathematics, Engineering, Science, Achievement (MESA) Lab and Study Lounge at West Hills College and the STEM Success Center at Bakersfield College, are helping students tap their academic potential and careers in STEM, which otherwise might have gone unrealized. And four Born Learning Trails throughout Kern County boost children's language and literacy skills, prepare them for success in school and life, and encourage them and their parents or caregivers to learn while getting exercise. And, as a dedicated sponsor of Kern Community Foundation's *Community Giving Guide*, we can help philanthropists, volunteers and advocates connect with nonprofits registered with the foundation. We think that's a win for all!



MESA Lab and Study Lounge at West Hills College



Boys & Girls Clubs of Kern County



Born Learning Trail in Arvin



Aera STEM Success Center at Bakersfield College

Thank You to Our Fundholders

Robert C. and Doreen
Boylan Abrams Fund
Aera Energy Fund
AFG Project Fund
Alpha Phi Alpha Fraternity
Kappa Eta Lambda Chapter
Scholarship Fund
David Anderson Athletic
Scholarship Fund
Dr. Joseph E. Anderson
Scholarship Fund
Peter Anthony Catholic
Education Fund
Arthritis Association of
Kern County Fund
Arvin Union Congregational
Church Scholarship Fund
Arvin Women's Club - Ellen
Kovacevich Scholarship
Fund
The Arvin Women's Club
Scholarship Fund
B3K Fund
The Bakersfield Aquatics
Center Fund
Bakersfield ARC Foundation
Endowment Fund
Bakersfield Christian High
School Endowment Fund
Bakersfield High School
Endowment Fund
The Donald E. and Audrey
W. Barnes Charitable Fund
Donald and Earlene Barnes
Charitable Fund
Kristen Barnes
Charitable Fund
Batey Charitable Fund
Ben and Bryan Batey
Charitable Fund
Jean Baughman
Legacy Fund
Jack Beaton Memorial
Scholarship Fund
Beman Vernon
Family Fund of Kern
Phyllis J. Bivins
Memorial Fund
J & C Bowman Fund
The Boydston Family
Charitable Fund
S & L Boyle Family Fund
Derek Brown Memorial
Scholarship Fund

California Living Museum
(CALM) Al Robbins
Endowment Fund
Caratan Family
Scholarship Fund
Larry Carr Memorial
Scholarship Fund
The Cat People
Endowment Fund
CCS Transition
Scholarship Fund
Dolores & Victor Cerro St.
Francis Scholarship Fund
The Judith B. Chase
Family Fund
Coe, Gorman, Diggles
Foundation
Community Disaster
Relief Fund
Community Endowment Fund
Community Nest Fund
Connected Community
Network Fund
Noel E. Daniells Permanent
Endowment Fund
Curtis & Peggy
Darling Funds
Richard & Lorraine Davies
Charitable Fund
Day of Remembrance Fund
Dev Charitable Fund
Rayburn and Joan
Dezember Charitable Fund
Jeff and Denise Dittman
Charitable Fund
Gee Durn Fund
East Bakersfield High
School Class of 1957 -
Ron Robison Memorial
Scholarship Fund
Karin Enebo Memorial Violin
Scholarship Fund
Extreme Makeover Home
Edition Kern County Fund
Sean E. Farley Memorial
Scholarship Fund
Shirley Farnsworth Fund
Claude & Shirley Fiddler
Charitable Fund
Fisherman's Fellowship
Charitable Fund
Foothill Foundation
Endowment Fund

The Fox Theater Foundation
Endowment Fund
The Golden Empire Gleaners
Endowment Fund
Manuel Gonzales Jr.
Memorial Scholarship Fund
The Gordon Charitable Fund
Ed and Sue Green Family
Charitable Fund
The Green Hotel
Restoration Fund
Merle Haggard Musical
Scholarship Fund
Fred and Virginia Hamisch
Charitable Fund
Handouts Don't Help Fund
Heart Never Forgets
Endowment Fund
Honor Run Scholarship Fund
JLB Community Center Fund
George & Karen Johnson
Family Fund
Juvenile Court Special Needs
Fund for Foster Children
Kayli Memorial Fund
Duane and Corey Keathley
Charitable Fund
The Kern 178 Corridor Fund
Kern Alliance of Nonprofits
Kern Audubon Society Fund
Kern County COVID-19
Relief Fund
Kern County Earthquake
Disaster Relief Fund
Kern Futures Scholarships
Now Fund
Kern Futures Scholarships
Together Fund
Kern High School District
Counselors Scholarship Fund
Kern Preparedness and
Resiliency Fund
Kern River Preserve
Stewardship
Endowment Fund
Kern River Valley
Community Funds
Kern River Valley
Educational and Cultural
Foundation Fund
Scott Kirschenmann Family
Foundation Fund
KRVHF Stewardship Fund

Lampe Fund
Leaders in Life
Endowment Fund
Justin and Carrie Leland
Charitable Fund
LinkEd Fund
Links for Life Legacy
Endowment Fund
Linda Lopez Charitable Fund
Matthews Family Trust Fund
The Mayor of Bakersfield
Scholarship Fund
Robert and Judith McCarthy
Family Fund
Garrett and Elizabeth Ming
Charitable Fund
David Moore Agricultural
Scholarship Fund
The David and Jan Nicholas
Charitable Fund
Nickel Family Fund
Nickel Family Scholarship for
Agricultural Education Fund
North Kern Christian School
Endowment Fund
Nnanedu Odeluga
Memorial Fund
Palitz Family
Charitable Fund
Parks-Anderson
Charitable Fund
Phillips Family Fund
Dr. Richard P. Pierucci
Scholarship Fund
Plank Family
Charitable Fund
Prolific Talents Fund
Tom Pryor PTSD
Awareness Fund
Oscar and Libbie Rudnick
Scholarship Fund
The Marjorie Rump Charitable
Endowment Fund
Sanders Family Fund
Bailey Schweitzer Memorial
Scholarship Fund
Scoliosis Strong Fund
Eunice Sears Scholarship
for Music Fund
Shafter Historical -
Ohanneson Fund
Shafter Historical Society
Museum Curator Fund

Sheldon Family
Charitable Fund
Sheriff's Employees'
Benefit Association
Scholarship Fund
Gayland P. & Joy A. Smith
Family Fund
Spotlight Theater
Reserve Fund
SSRS Stewardship
Endowment Fund
The Marvin Steinert Family
Charitable Fund
The George and Helen Stewart
Memorial Scholarship Fund
Rod Stiefvater
Foundation Fund
Sandys S. Tang & Mora
Tang Fund
C. Jeff & L. Elaine Thomson
Commemorative Fund
The Jack and Mary Lou
Thomson Endowment Fund
Edward M. and Constance W.
Tilbury Endowment Fund
Trang Family Charitable Fund
Trinity Foundation Fund
Upper Kern Fisheries
Enhancement Fund
Margaret Urner Bakersfield
Symphony Orchestra Funds
Velasco Family Fund
Eugene J. Voiland
Charitable Fund
The Blanche & Irma Weill
Foundation Fund
Tim and Katie Werdel
Giving Fund
West High School Alumni
Association Funds
Westminster Presbyterian
Church Foundation Funds
Diane L. White
Charitable Fund
Stan and Nancy Wilson
Benevolence Fund
Helen Hawk Windes
Charitable Fund
The Women's and Girls' Funds
Cassandra Wright
Charitable Fund
Michael and Jennifer Young
Family Charitable Fund
Bryce & Florence York Fund



KERN COMMUNITY FOUNDATION

3300 Truxtun Avenue, Suite 220, Bakersfield, CA 93301
Phone: 661.325.5346 / Fax: 661.325.5358
kernfoundation.org

Printing of this edition of the *Community Giving Guide* is provided by a grant from Bank of America.



BANK OF AMERICA



Excellence. Accountability. Impact.™